



## Woodlands Drive, Yarm, TS15 9NU

Offered with NO CHAIN, this large detached three-bedroom bungalow, with conservatory and detached double garage is located in one of the most sought after areas of Yarm, directly off Leven Road and within a short walk to Yarm High Street.

This delightful property offers a porch, leading to a welcoming hallway, spacious lounge, dining room and kitchen/breakfast room. The conservatory provides a great spot to overlook the rear garden, with lawn and mature shrubs offering a sunny aspect and a high level of privacy. The large master bedroom features built-in wardrobes and an en-suite, with two further good sized bedrooms, both with built-in wardrobes, and a family bathroom/WC.

Externally, this property is positioned on a good size corner plot and there are neat gardens to the front, rear and side with double width block paved driveway leading to a double garage with electric sockets and lighting. The rear garden greenhouse is included in the sale.

This quality home would be ideal for those buyers looking for living space all on one level but it would be equally suited to family buyers.

Asking Price £440,000



# Woodlands Drive, Yarm, TS15 9NU

PORCH

HALL

LOUNGE

16'10 x 12'8 (5.13m x 3.86m)

DINING ROOM

10'11 x 9'11 (3.33m x 3.02m)

KITCHEN/BREAKFAST ROOM

10'11 x 10'1 (3.33m x 3.07m)

CONSERVATORY

10'1 x 7' (3.07m x 2.13m)

LANDING

MASTER BEDROOM

12'10 x 18'1 (3.91m x 5.51m)

EN-SUITE

5'11 x 5'10 (1.80m x 1.78m)

BEDROOM TWO

14'1 x 10' (4.29m x 3.05m)

BEDROOM THREE

10'1 x 9'4 (3.07m x 2.84m)

BATHROOM

8'2 x 7'7 (2.49m x 2.31m)

UTILITY

5'11 x 5'1 (1.80m x 1.55m)



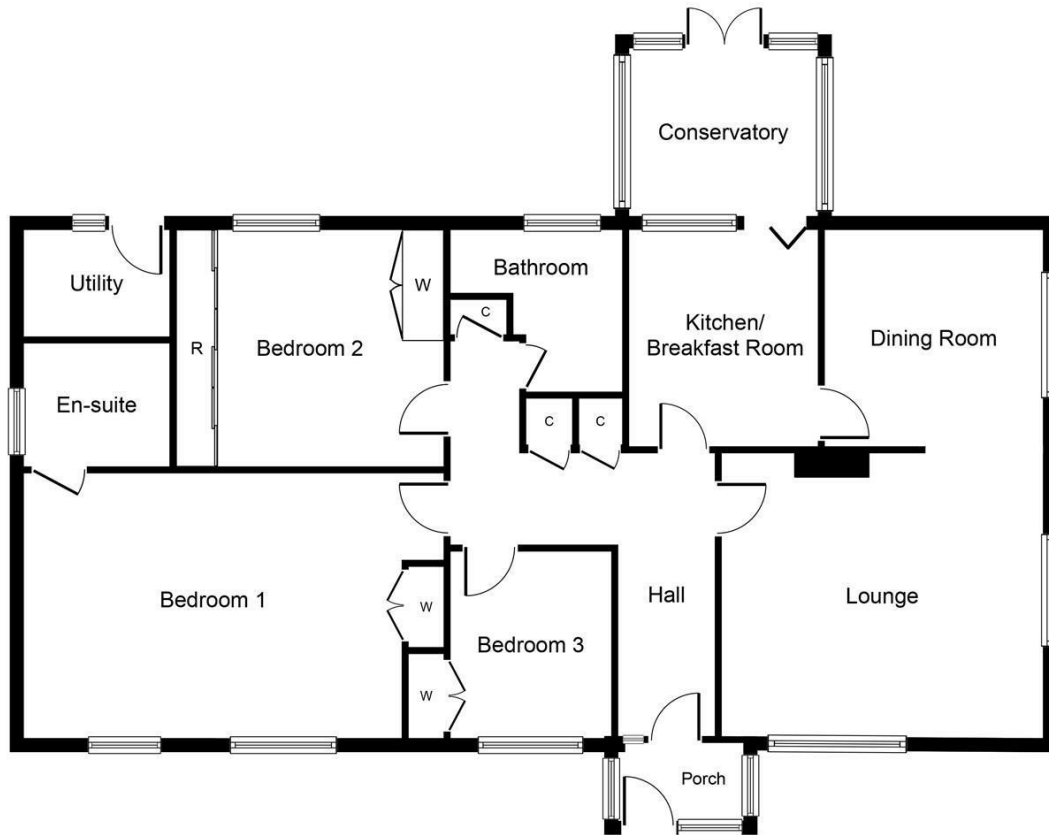
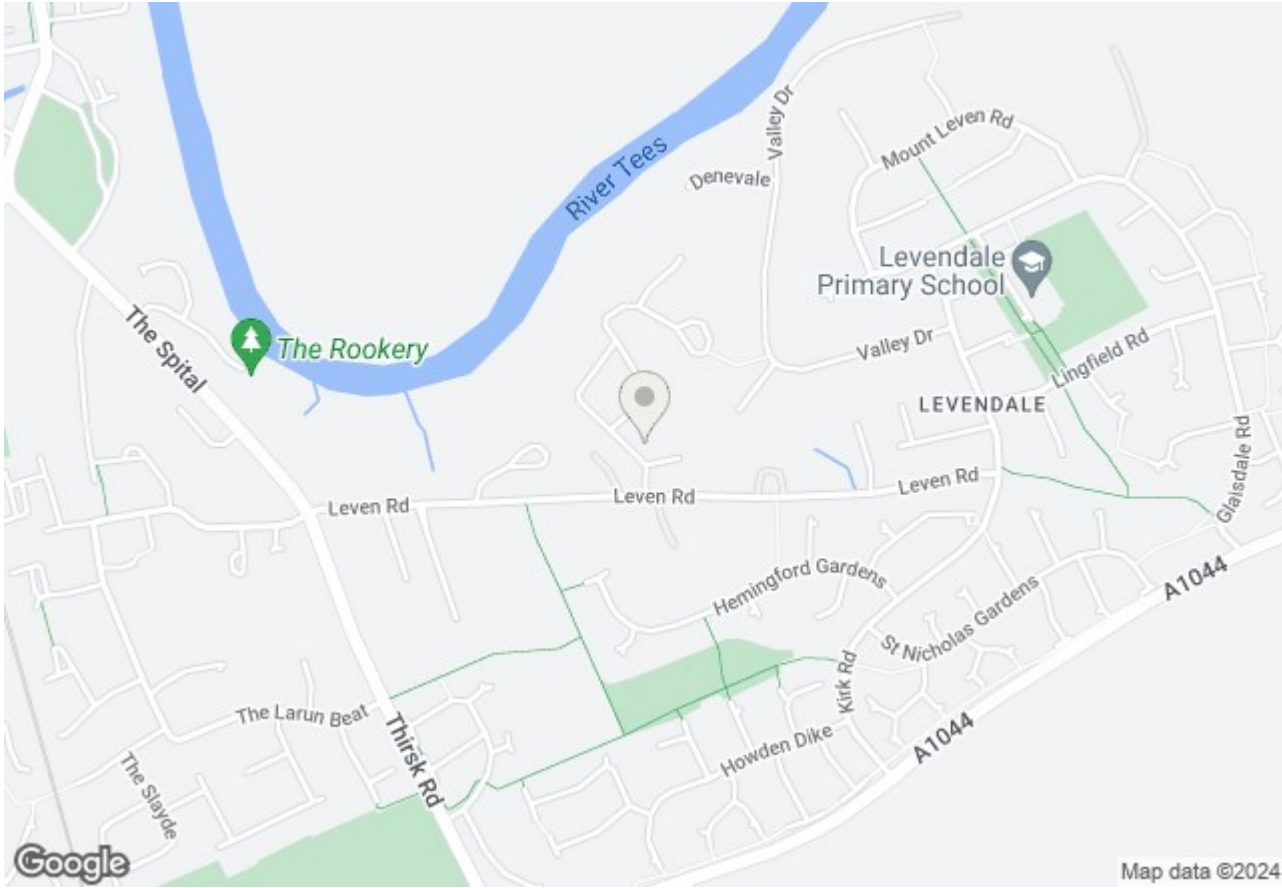
Woodlands Drive, Yarm, TS15 9NU



Woodlands Drive, Yarm, TS15 9NU

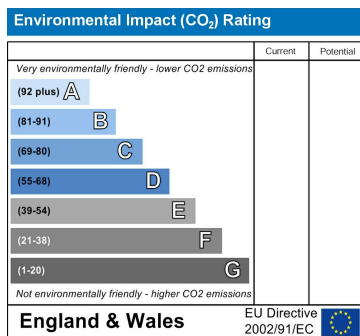
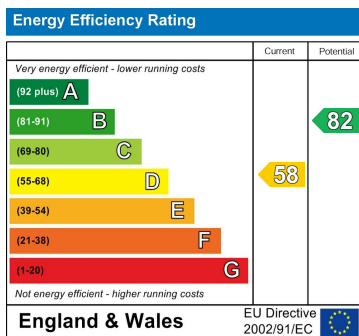


# Woodlands Drive, Yarm, TS15 9NU



Whilst every attempt has been made to ensure the accuracy of the floor plan contained here, measurements of doors, windows, rooms and any other items are approximate and no responsibility is taken for any error, omission, or mis-statement. The measurements should not be relied upon for valuation, transaction and/or funding purposes. This plan is for illustrative purposes only and should be used as such by any prospective purchaser or tenant. The services, systems and appliances shown have not been tested and no guarantee as to their operability or efficiency can be given.  
Copyright V360 Ltd 2024 | www.houseviz.com

# Woodlands Drive, Yarm, TS15 9NU



## VIEWING

Please contact us on 01642 248248 if you wish to arrange a viewing or would like more information.

These particulars, whilst believed to be accurate are set out as a general outline only for guidance and do not constitute any part of an offer or contract. Intending purchasers should not rely on them as statements of representation of fact, but must satisfy themselves by inspection or otherwise as to their accuracy. No person in this firm's employment has the authority to make or give any representation or warranty in respect of the property.