



## Newsam Crescent, Eaglescliffe, Stockton-On-Tees, TS16 0EB

Offered for sale with the benefit of NO CHAIN, this two bedroom semi-detached house is in a cul-de-sac location within Eaglescliffe.

The accommodation comprises of hall, lounge with electric fire and spacious kitchen/dining room with separate utility room. To the first floor are two double bedrooms, one with wardrobes, and a wet room.

Externally, the property benefits from front garden and westerly facing rear garden.

This home features gas central heating and uPVC double glazed windows throughout. With its proximity to respected primary and secondary schools, shops, and convenient access to Yarm High Street, this property presents an opportunity for modernisation, appealing to both investors and first-time buyers.

Asking Price £140,000





# Newsam Crescent, Eaglescliffe, Stockton-On-Tees, TS16 0EB

HALL

LOUNGE

14'1 x 12'7 (4.29m x 3.84m)

KITCHEN/DINING ROOM

17'6 x 8'6 (5.33m x 2.59m)

INNER HALL

UTILITY

6'11 x 6'8 (2.11m x 2.03m)

LANDING

BEDROOM ONE

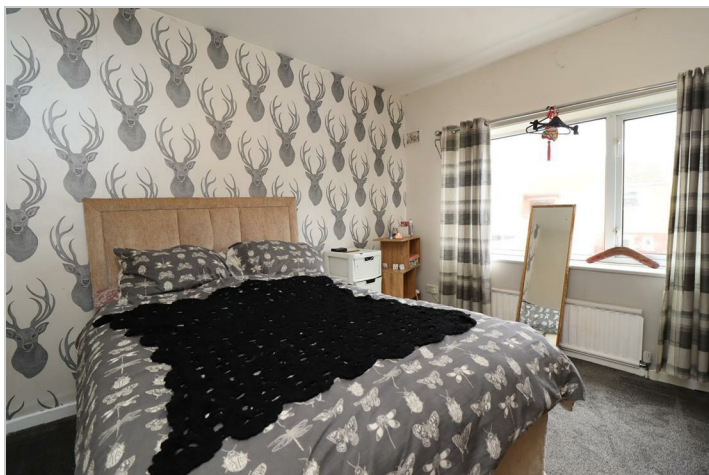
13' x 10'7 (3.96m x 3.23m)

BEDROOM TWO

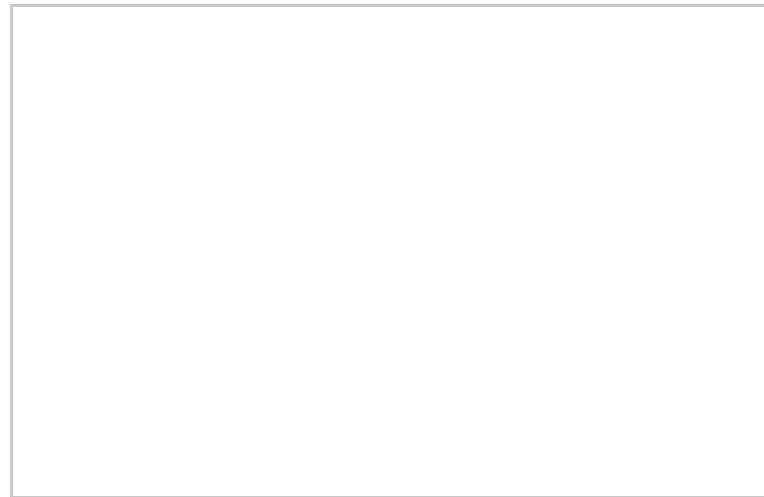
10'9 x 10'7 (3.28m x 3.23m)

WET ROOM

6'10 x 5'4 (2.08m x 1.63m)



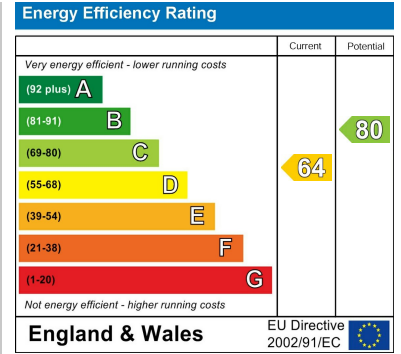




## Map



## EPC graph



## Floor Plan



## VIEWING

Please contact us on 01642 248248 if you wish to arrange a viewing or would like more information.

These particulars, whilst believed to be accurate are set out as a general outline only for guidance and do not constitute any part of an offer or contract. Intending purchasers should not rely on them as statements of representation of fact, but must satisfy themselves by inspection or otherwise as to their accuracy. No person in this firm's employment has the authority to make or give any representation or warranty in respect of the property.