



Oakfield Avenue, Eaglescliffe, TS16 0HW

Offered with NO ONWARD CHAIN and situated in a cul-de-sac on the Orchard Estate in Eaglescliffe, this EXTENDED 3 bedroom semi-detached bungalow is close to schools, shopping facilities, bus services and within easy access to Yarm High Street.

The accommodation comprises; entrance hall, spacious lounge with French doors to rear southerly facing low maintenance garden, adjacent is the extended kitchen/dining room with integrated oven, hob, fridge freezer and washing machine, shower room, two bedrooms downstairs, and an additional double bedroom in the dormer conversion, with its own WC. This home offers flexible accommodation and benefits from gas central heating and double glazing.

Externally, the property is approached via a generous block paved driveway leading to a single detached garage with additional off-road parking available on the block paved front garden.

Asking Price £205,000



Oakfield Avenue, Eaglescliffe, TS16 0HW

HALL

BEDROOM THREE
8'11" x 8'9" (2.72m x 2.67m)

BEDROOM TWO
11'10" x 11" (3.61m x 3.35m)

SHOWER ROOM/WC
6'4" x 8'4" (1.93m x 2.54m)

KITCHEN/DINING ROOM
20'11" x 8'10" (6.38m x 2.69m)

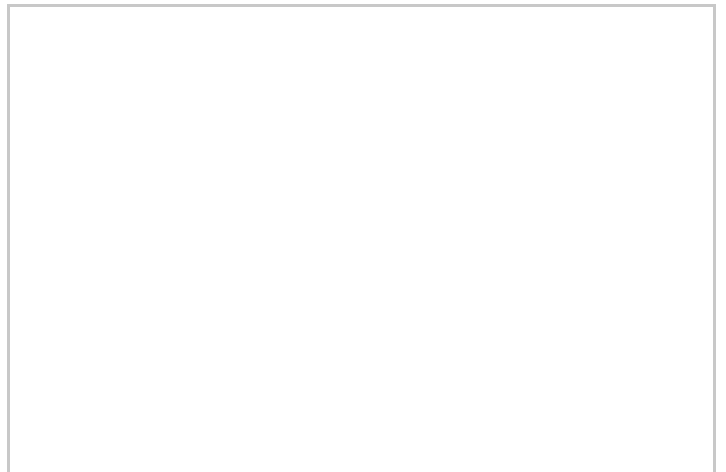
LOUNGE
24'10" x 10'1" (7.57m x 3.07m)

LANDING

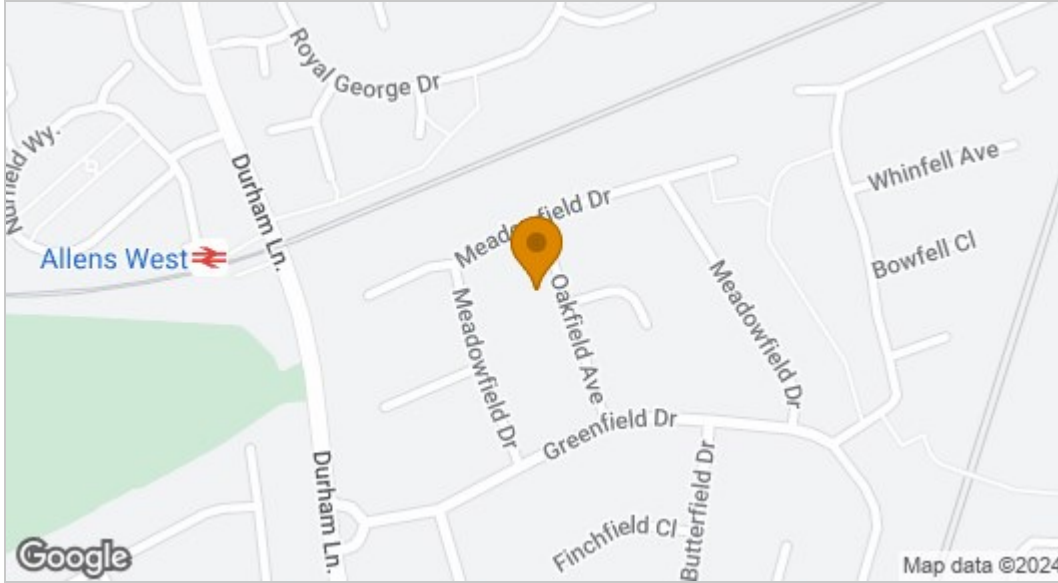
BEDROOM ONE
13'3" x 13'7" (4.04m x 4.14m)

WC
8'3" x 3'10" (2.51m x 1.17m)

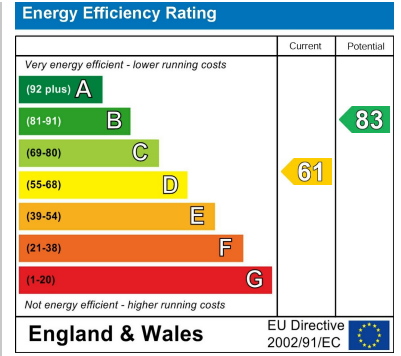




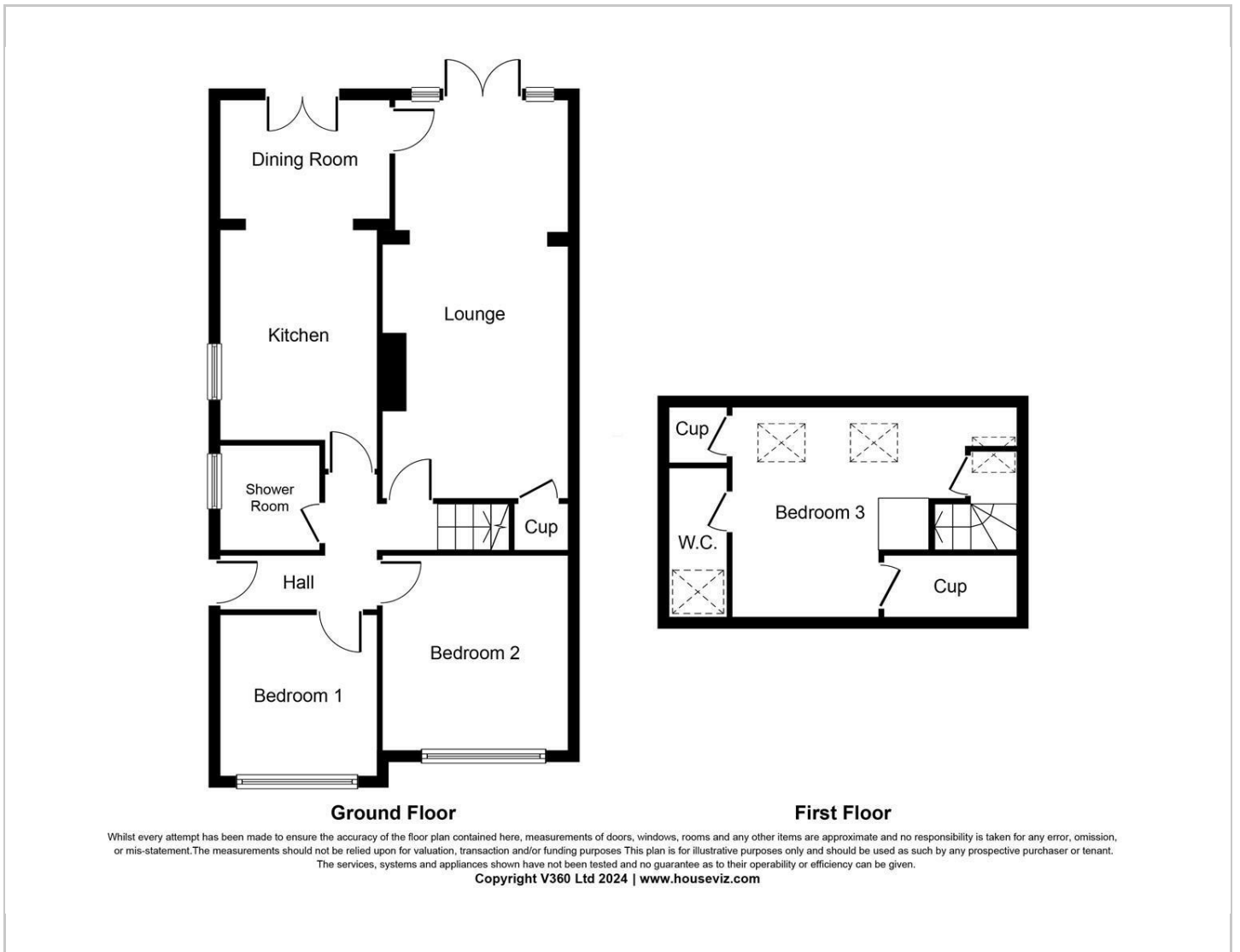
Map



EPC graph



Floor Plan



VIEWING

Please contact us on 01642 248248 if you wish to arrange a viewing or would like more information.

These particulars, whilst believed to be accurate are set out as a general outline only for guidance and do not constitute any part of an offer or contract. Intending purchasers should not rely on them as statements of representation of fact, but must satisfy themselves by inspection or otherwise as to their accuracy. No person in this firm's employment has the authority to make or give any representation or warranty in respect of the property.