



Garratt Road, Yarm, TS15 9ZF

OFFERED WITH NO ONWARD CHAIN. This 2 BEDROOM END TERRACE HOUSE is located on the popular Leven Woods development. situated on the outskirts of Yarm, this property is close to highly regarded primary and secondary schools and is only a few minutes walk from Yarm train station, along with the A19 and good road networks being within easy reach for commuting.

Accommodation is gas centrally heated via a combi boiler and double glazed throughout. Comprises lounge, kitchen/dining room with integrated oven and gas hob, ground floor cloaks/wc and to the first floor are two double bedrooms and a modern bathroom with white suite to include shower over the bath.

Externally there is off road parking for two vehicles to the block paved driveway to the front and to the rear is an enclosed lawned garden with patio area.

Asking Price £170,000



Garratt Road, Yarm, TS15 9ZF

HALL

LOUNGE

13' x 12" (3.96m x 3.66m)

KITCHEN/DINING ROOM

12'9" x 7'10" (3.89m x 2.39m)

WC

3'5" x 6'11" (1.04m x 2.11m)

LANDING

BATHROOM

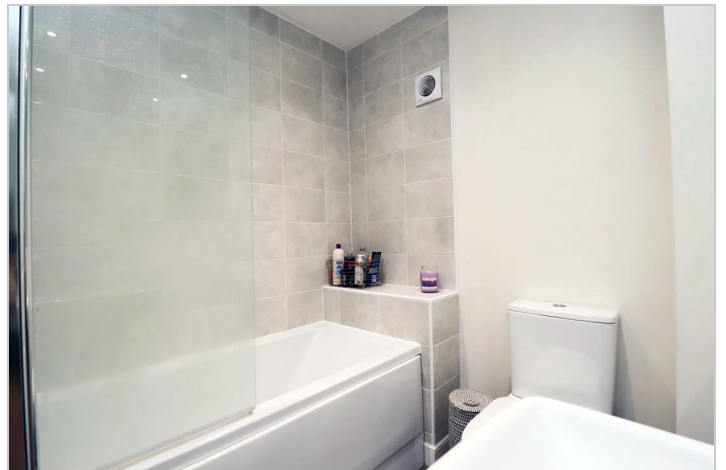
6'5"x 6'1" (1.96mx 1.85m)

BEDROOM ONE

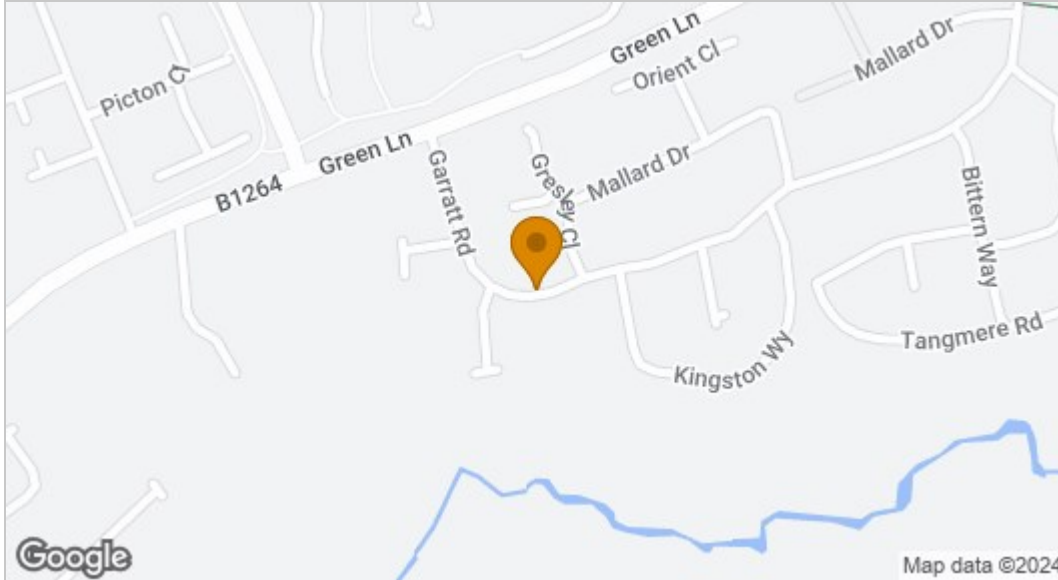
9'5" x 12'11" (2.87m x 3.94m)

BEDROOM TWO

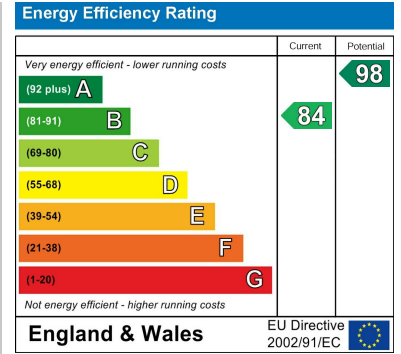
12'11" x 7'1" (3.94m x 2.16m)



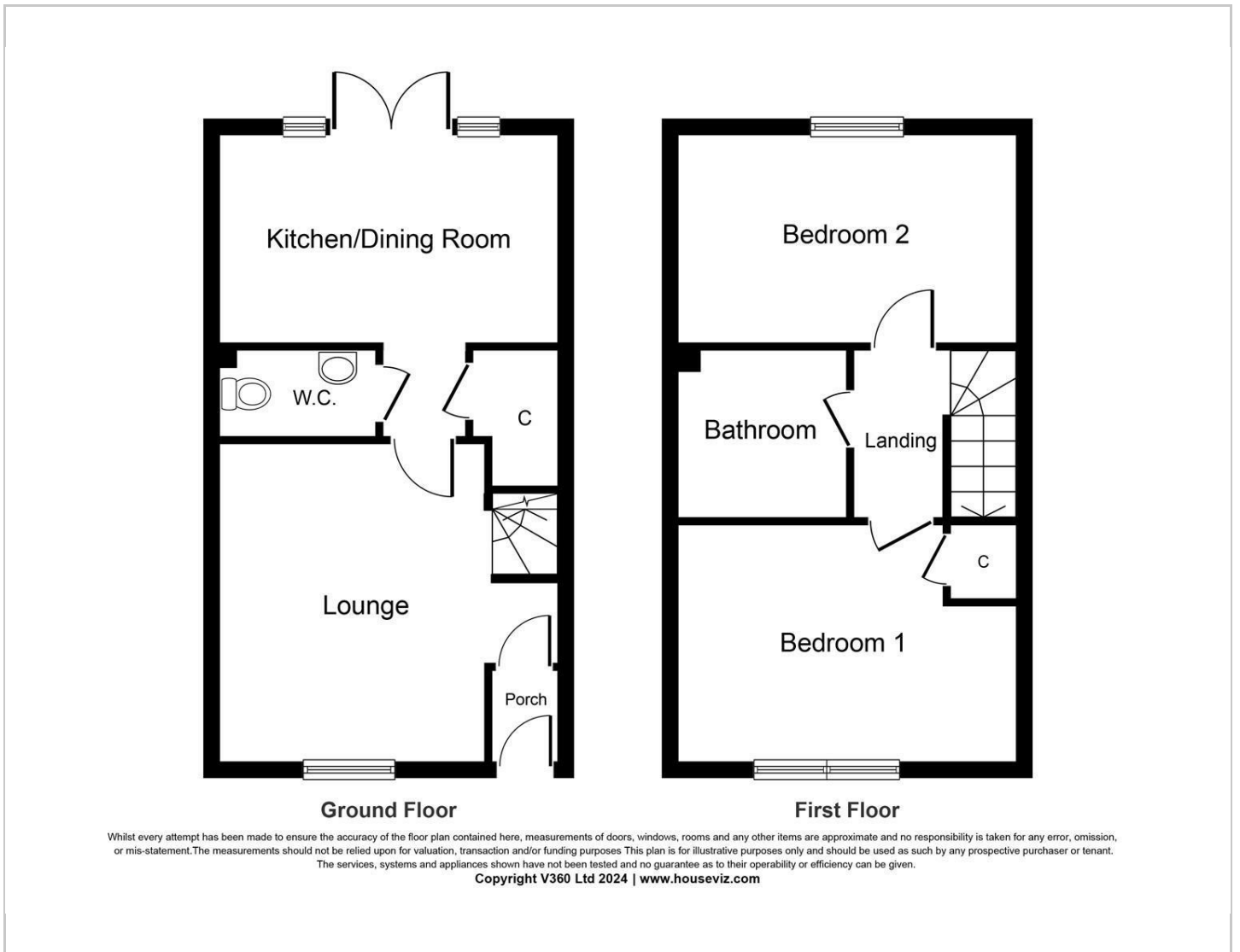
Map



EPC graph



Floor Plan



VIEWING

Please contact us on 01642 248248 if you wish to arrange a viewing or would like more information.

These particulars, whilst believed to be accurate are set out as a general outline only for guidance and do not constitute any part of an offer or contract. Intending purchasers should not rely on them as statements of representation of fact, but must satisfy themselves by inspection or otherwise as to their accuracy. No person in this firm's employment has the authority to make or give any representation or warranty in respect of the property.