



Cromer Court, Eaglescliffe, Stockton-On-Tees, TS16 9EF

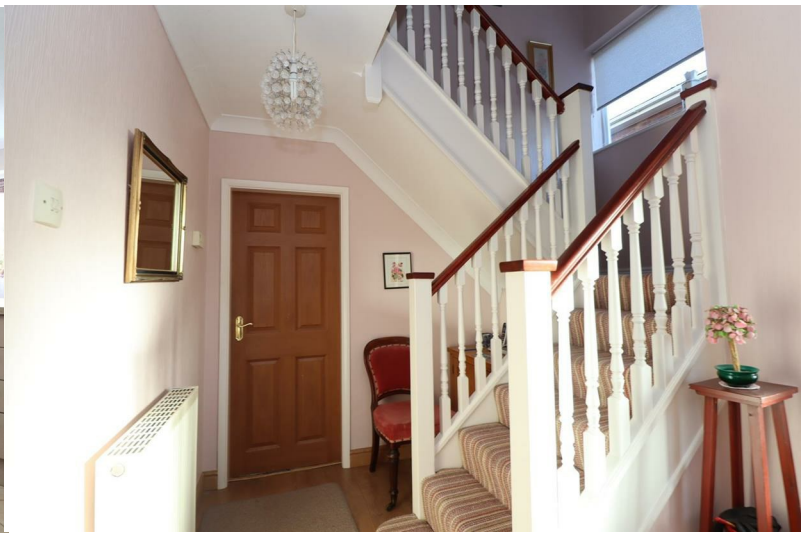
An opportunity to purchase this EXTENDED DETACHED HOUSE situated in a cul de sac on the sought after Sunningdale development in Eaglescliffe where the esteemed Links Primary School and Egglecliffe Secondary School and Sixth Form are within walking distance. Accommodation is gas centrally heated via a Baxi combi boiler which we are advised has been serviced annually since installation 5/6 years ago.

The property is entered via a porch opening into a hallway leading to a ground floor wc, kitchen/dining room, 22 foot lounge with bow window and double doors opening into the dining room, the kitchen/diner is fitted with a modern range of taupe coloured gloss units and benefits integrated gas hob, extract fan, dishwasher and electric oven, a free standing fridge/freezer and washing machine are included in the sale. A recent addition to the ground floor sun room is the new roof ensuring a warm and cosy room to enjoy with French doors opening into the rear garden.

To the first floor are 3 bedrooms, the main bedroom fitted with a range of wardrobes and dressing table, the family bathroom is fitted with a shower and white vanity units.

Externally there are lawned gardens to the front and rear and a block paved driveway leading to a garage.

£270,000



Cromer Court, Eaglescliffe, Stockton-On-Tees, TS16 9EF

ENTRANCE PORCH

ENTRANCE HALLWAY

LOUNGE

22'0" x 12'1" reducing to 9'6" (6.71 x 3.68 reducing to 2.90)

KITCHEN/DINING ROOM

19'9" x 19'0" reducing to 8'6" (6.02 x 5.79 reducing to 2.59)

GROUND FLOOR WC

2'10" x 6'8" (0.86 x 2.03)

SUN ROOM

10'2" x 10'10" (3.10 x 3.30)

LANDING

BEDROOM 1

12'2" x 10'7" (3.71 x 3.23)

BEDROOM 2

11'0" x 9'7" (3.35 x 2.92)

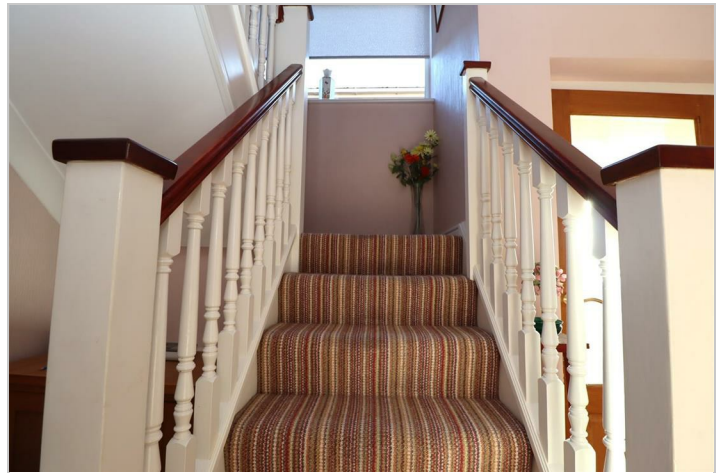
BEDROOM 3

9'3" x 7'9" (2.82 x 2.36)

BATHROOM

6'7" x 6'10" (2.01 x 2.08)

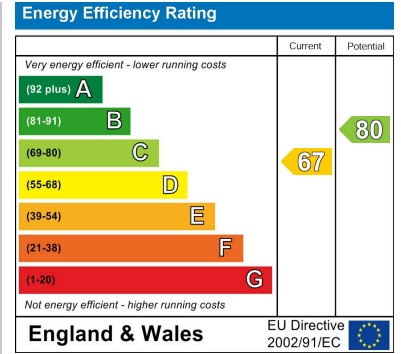




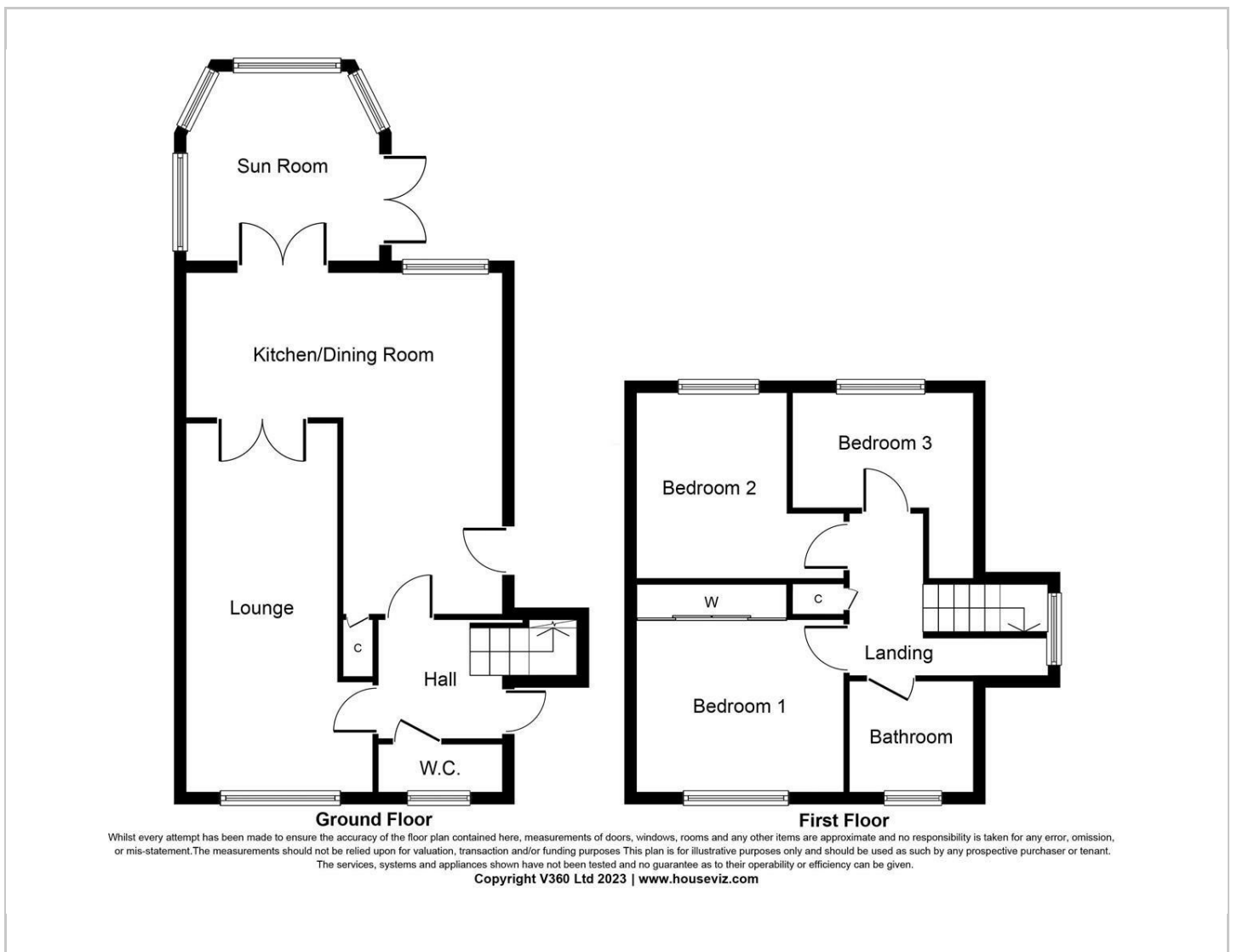
Map



EPC graph



Floor Plan



VIEWING

Please contact us on 01642 248248 if you wish to arrange a viewing or would like more information.

These particulars, whilst believed to be accurate are set out as a general outline only for guidance and do not constitute any part of an offer or contract. Intending purchasers should not rely on them as statements of representation of fact, but must satisfy themselves by inspection or otherwise as to their accuracy. No person in this firm's employment has the authority to make or give any representation or warranty in respect of the property.