



Merryweather Court, Yarm, TS15 9FF

This upper floor apartment will suit a range of buyers including first time buyers, Investors and young professionals due to it's prime location just off Yarm High Street. The combination of allocated parking and GARAGE, close proximity to the River Tees, which offers lovely riverside walks, and convenient access to Yarm High Street with it's wonderful array of coffee shops, bars, restaurants and individual shops, make this modern apartment very appealing.

The accommodation provides an entrance lobby leading to the hallway which gives access to the lounge/dining area, featuring French doors opening out to a Juliet balcony, and a kitchen equipped with white units including built in electric oven and hob. There are two bedrooms, a bathroom with suite including a shower over the bath, and there is a utility cupboard which houses the gas central heating boiler providing functional storage.

Offered for sale with the advantage of NO ONWARD CHAIN this property is ideal for a buyer looking for a peaceful location yet with shopping facilities and amenities on your doorstep.

Offers Over £145,000



Merryweather Court, Yarm, TS15 9FF

ENTRANCE HALL

LOUNGE/DINING ROOM

17'9" x 9'8" (5.41 x 2.95)

KITCHEN

7'6" x 7'10" (2.29 x 2.39)

BEDROOM 1

9'7" x 10'9" (2.92 x 3.28)

BEDROOM 2

9'9" x 8'5" (2.97 x 2.57)

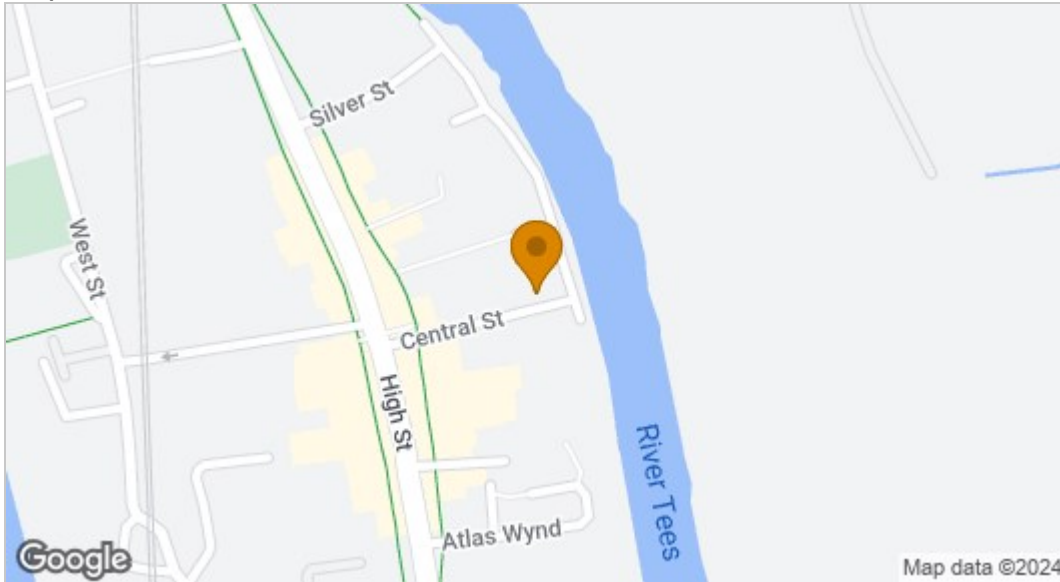
BATHROOM

8'4" x 7'7" (2.54 x 2.31)

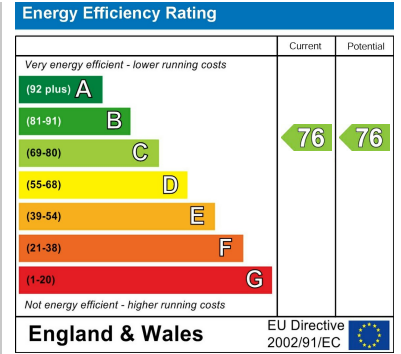




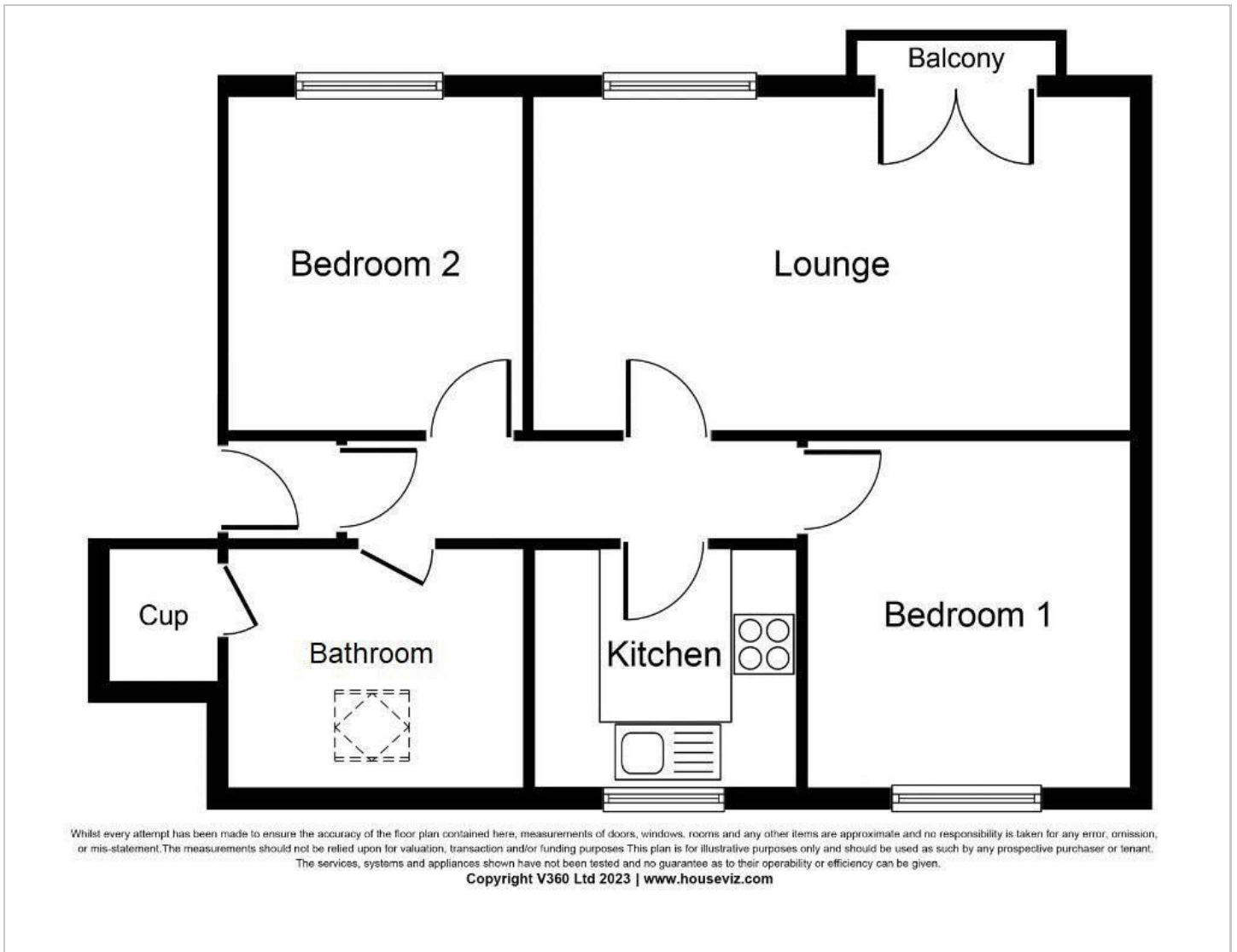
Map



EPC graph



Floor Plan



VIEWING

Please contact us on 01642 248248 if you wish to arrange a viewing or would like more information.

These particulars, whilst believed to be accurate are set out as a general outline only for guidance and do not constitute any part of an offer or contract. Intending purchasers should not rely on them as statements of representation of fact, but must satisfy themselves by inspection or otherwise as to their accuracy. No person in this firm's employment has the authority to make or give any representation or warranty in respect of the property.

101 High Street, Yarm, TS15 9BB

Tel: 01642 248248 Email: yarm@gowlandwhite.co.uk <https://www.gowlandwhite.co.uk/>