

Energy Efficiency Rating		Current	Potential
Very energy efficient - lower running costs			
(92 plus) A		83	83
(81-91) B			
(69-80) C			
(55-68) D			
(39-54) E			
(21-38) F			
(1-20) G			

Environmental Impact (CO <sub>2</sub> ) Rating		Current	Potential
Very environmentally friendly - lower CO <sub>2</sub> emissions			
(92 plus) A			
(81-91) B			
(69-80) C			
(55-68) D			
(39-54) E			
(21-38) F			
(1-20) G			

We have endeavoured to supply this information as accurate as possible. Before making an offer, buying or renting this property please seek independent or professional advice.

Coverdale Road, London, NW2 4BE

Asking Price £580,000

Subject to Contract

- Newly built one bedroom
- Modern black framed double glazed windows and doors
- Mable worktop on white laquered fitted kitchen
- 999 year lease
- Timber style flooring
- Private terrace
- Contemporary style bathroom



Tel: +44 (0)2 8960 9988  
Fax: +44 (0)2 8960 9989

Email: mail@warwickstateagency.co.uk  
warwickstateagents.tv | warwickstateagents.co.uk

69 Chamberlayne Road, London NW10 3ND  
Tel: +44 (0)20 8960 9988 Fax: +44 (0)20 8960 9989



Tel: +44 (0)2 8960 9988  
Fax: +44 (0)2 8960 9989

Email: mail@warwickestateagency.co.uk | warwickestateagents.tv | warwickestateagents.co.uk  
Tel: +44 (0)20 8960 9988 Fax: +44 (0)20 8960 9989

69 Chamberlayne Road, London NW10 3ND

### Coverdale Road, NW2 4BE

Welcome to this charming new build apartment located on the prestigious Coverdale Road in Brondesbury Park, London. This delightful property boasts a spacious reception room, perfect for entertaining guests or simply relaxing after a long day. With one cosy bedroom and a modern bathroom, this apartment offers comfort and style in equal measure.

Measuring 661 square feet, this new build apartment is designed to cater to your every need. The property's contemporary design and fresh feel make it a truly inviting space to call home. Whether you're a first-time buyer, a young professional, or looking for a lucrative investment opportunity, this apartment ticks all the boxes.

Situated in a sought-after area of London, this property offers not just a home, but a lifestyle. With easy access to local amenities, trendy cafes, and beautiful green spaces, you'll be perfectly placed to enjoy all that this vibrant city has to offer. Don't miss out on the chance to make this modern apartment your own and experience the best of London living.



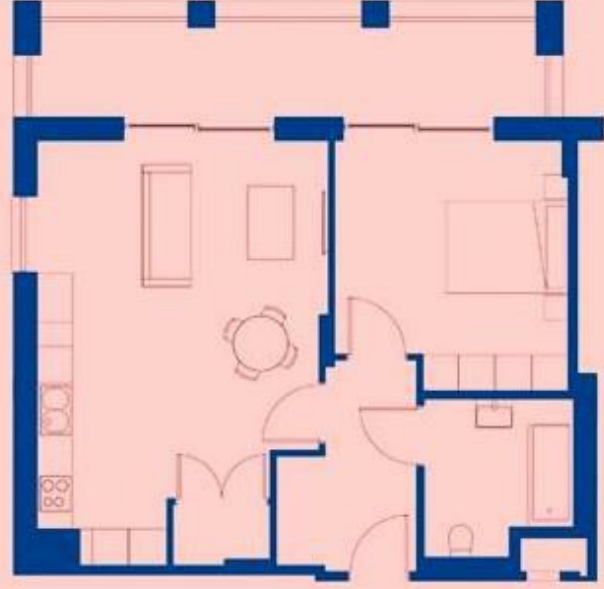
GROSS INTERNAL AREA  
61 sqm / 661 sqft

KITCHEN / LIVING  
7.0m x 4.8m / 22.8ft x 15.7ft

BEDROOM 1  
3.5m x 3.8m / 11.5ft x 12.6ft

BATHROOM  
2.7m x 2.6m / 8.8ft x 8.5ft

TERRACE / BALCONY  
8.4m x 1.5m / 27.5ft x 4.9ft



FIRST FLOOR  
1 BEDROOM