

| Energy Efficiency Rating | | Current | Potential |
|---|--|---------|-----------|
| Very energy efficient - lower running costs | | | |
| (92 plus) A | | | |
| (81-91) B | | | |
| (69-80) C | | 76 | 76 |
| (55-68) D | | | |
| (39-54) E | | | |
| (21-38) F | | | |
| (1-20) G | | | |

| Environmental Impact (CO ₂) Rating | | Current | Potential |
|---|--|---------|-----------|
| Very environmentally friendly - lower CO ₂ emissions | | | |
| (92 plus) A | | | |
| (81-91) B | | | |
| (69-80) C | | | |
| (55-68) D | | | |
| (39-54) E | | | |
| (21-38) F | | | |
| (1-20) G | | | |

We have endeavoured to supply this information as accurate as possible. Before making an offer, buying or renting this property please seek independent or professional advice.

Chamberlayne Road, London, NW10 3ND

Asking Price £599,950

Subject to Contract

- Fitted wardrobes in main bedroom
- Stylish fine hessian wallpaper in reception room
- Integrated appliances in a fully fitted contemporary style Corian kitchen
- White marble style fully tiled wall & floors in bathroom
- In the heart of Kensal Rise with all its abundance of amenities



Tel: +44 (0)2 8960 9988
Fax: +44 (0)2 8960 9989

Email: mail@warwickstateagency.co.uk
warwickstateagents.tv | warwickstateagents.co.uk

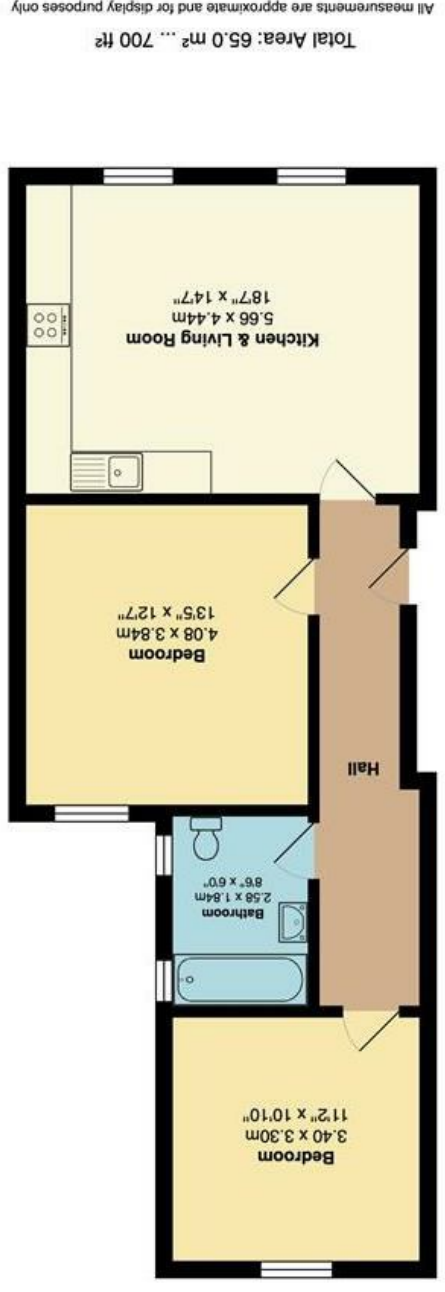
69 Chamberlayne Road, London NW10 3ND
Tel: +44 (0)20 8960 9988 Fax: +44 (0)20 8960 9989



Chamberlayne Road, NW10 3ND

Development of five luxury apartments over three floors... architecturally designed two double bedrooms finished to a high specification. Accessed via video entry-phone intercom from street level with marble worktops and bespoke fitted wardrobes in the main bedrooms. In the heart of this buzzing, trendy metropolis, with good transport links and a variety of bars/cafes and restaurants at your fingertips.

The properties range from 622 sq ft up to 747 sq ft of split-level living/entertaining space with low voltage lighting and double-glazed sash windows throughout. Sizable reception rooms with dining area, with stylish fine hessian wallpaper, integrated appliances in a fully fitted contemporary style Corian kitchen and oak wooden flooring, fully tiled with large marble style slabs in the bathrooms, and carpets in the bedrooms, creating a warm and tranquil atmosphere.



Flat 2, 69-71 Chamberlayne Road, London, NW10 3ND