

Energy Efficiency Rating		Current	Potential
Very energy efficient - lower running costs			
(92 plus) A			
(81-91) B			
(69-80) C		69	77
(55-68) D			
(39-54) E			
(21-38) F			
(1-20) G			

Environmental Impact (CO ₂) Rating		Current	Potential
Very environmentally friendly - lower CO ₂ emissions			
(92 plus) A			
(81-91) B			
(69-80) C			
(55-68) D			
(39-54) E			
(21-38) F			
(1-20) G			

We have endeavoured to supply this information as accurate as possible. Before making an offer, buying or renting this property please seek independent or professional advice.

Roundwood Road, Willesden Junction, NW10 9SY

£1,600 PCM

Subject to Contract

- Two double bedrooms
- Own entrance
- Door to garden from reception room
- Open plan kitchen/diner
- Slate style tiling in contemporary bathroom combined W.C
- Double glazed windows
- Timber style flooring
- Gas central heating



Tel: +44 (0)2 8960 9988
Fax: +44 (0)2 8960 9989

Email: mail@warwickstateagency.co.uk
warwickstateagents.tv | warwickstateagents.co.uk

69 Chamberlayne Road, London NW10 3ND
Tel: +44 (0)20 8960 9988 Fax: +44 (0)20 8960 9989

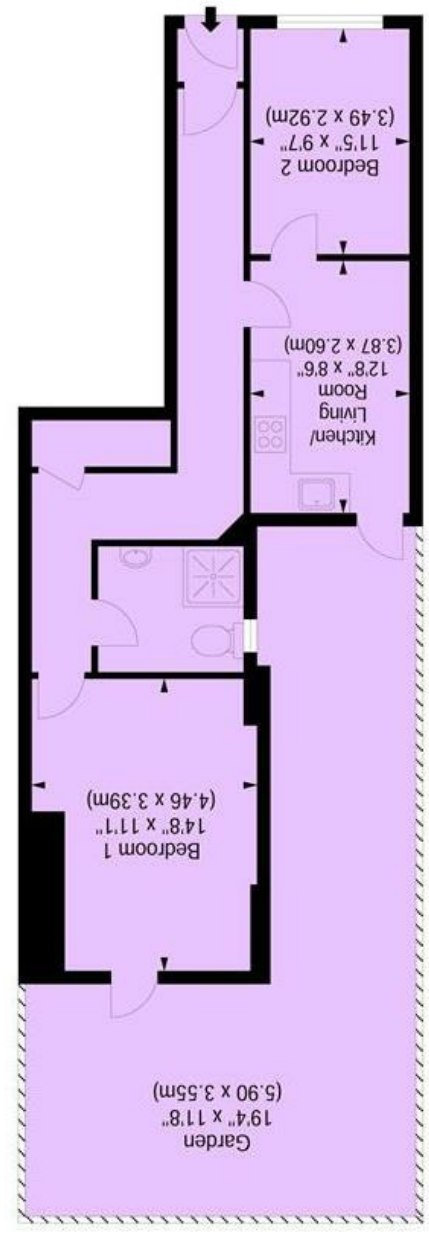


Roundwood Road, NW10 9SY

Own entrance ground floor apartment set in this older style building, benefiting from timber style flooring throughout, direct access to a private rear garden from reception room, modern white lacquered fitted open plan kitchen/diner and contemporary style bathroom combined w.c.

Roundwood Road is located within a short walking distance of a variety of local shops, approximately ten minutes from Neasden (Jubilee Line) tube and numerous alternative transport links.

Available now



Roundwood Road Church End & Roundwood, London, NW10 9SY
 Approximate Gross Internal Area 538 sq ft / 49.98 sq m

Ref
 Copyright ZIONMEDIA
 Disclaimer : Floor plan measurements are approximate and are for illustrative purposes only while we do not doubt the floor plan accuracy and completeness, you or your advisors should conduct a careful, independent investigation of the property in respect of monetary valuation