



Royden Way, Riverside Drive, Liverpool, L3 4DW

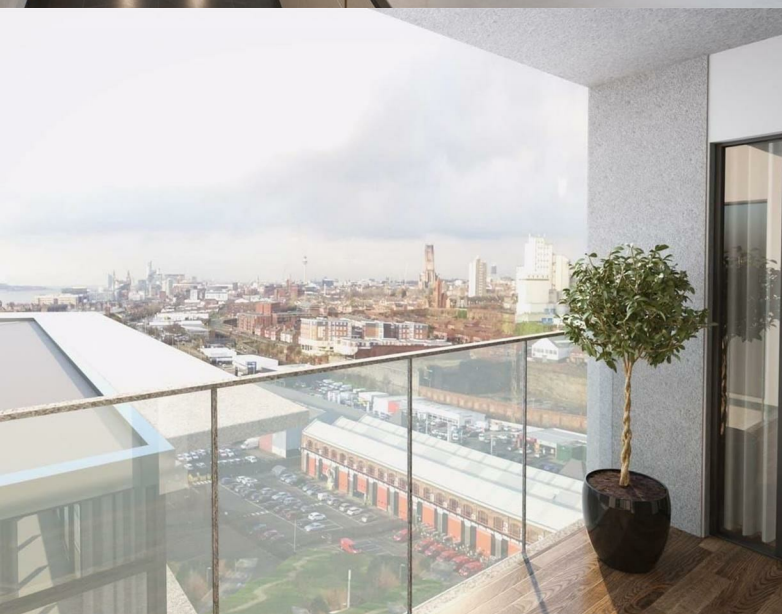
Asking Price £234,625

Subject to Contract

- Investment opportunity
- High level specification
- Parking available
- Sizable two bedroom apartment
- Over looking canal
- Swimming pool

Energy Efficiency Rating		
	Current	Potential
<i>Very energy efficient - lower running costs</i>		
(92 plus) A		
(81-91) B		
(69-80) C		
(55-68) D		
(39-54) E		
(21-38) F		
(1-20) G		
<i>Not energy efficient - higher running costs</i>		
England & Wales	EU Directive 2002/91/EC	

Environmental Impact (CO ₂) Rating		
	Current	Potential
<i>Very environmentally friendly - lower CO2 emissions</i>		
(92 plus) A		
(81-91) B		
(69-80) C		
(55-68) D		
(39-54) E		
(21-38) F		
(1-20) G		
<i>Not environmentally friendly - higher CO2 emissions</i>		
England & Wales	EU Directive 2002/91/EC	



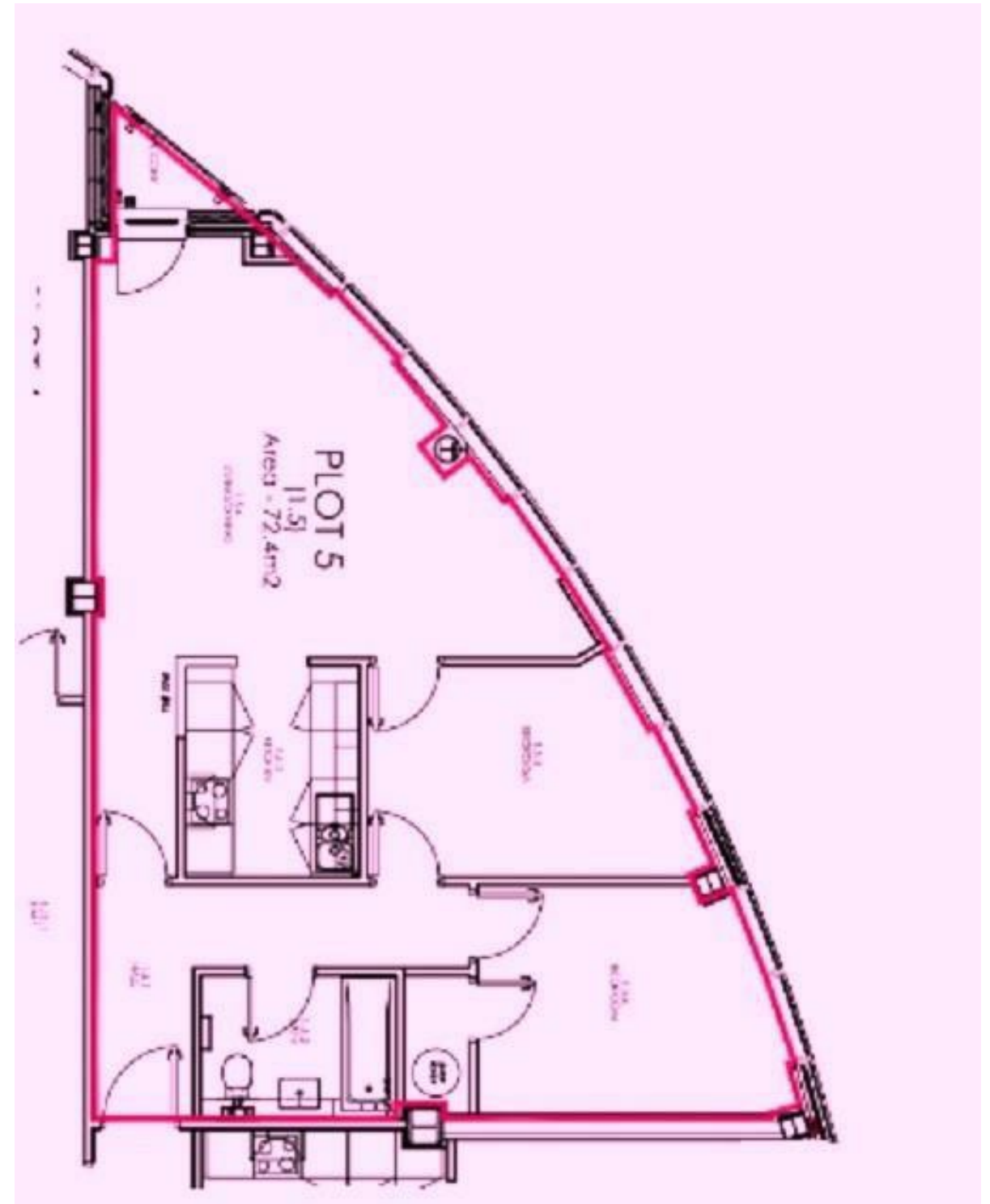
Royden Way, Riverside Drive, L3 4DW

Herculaneum Quay is a prestigious development located on the waterfront at what was once Herculaneum Dock, part of Liverpool's great maritime story. At a location steeped in history, the scheme consists of 119 luxury apartments, most with their own outside space. With a grandstand view of the River Mersey, residents will experience the evocative sights, sounds, smells, and sea breezes unique to riverside developments.

Herculaneum Quay comprises a mixture of one, two, and three-bedroomed apartments, with the additional benefit of a private residents' pool, and three levels of underground car parking.

Our intention is to also create an urban beach alongside the residential building to make this a city destination in the truest sense.

Note: The images are a guide only



Tenure Leasehold

Price Asking Price £234,625 Subject to Contract

Viewing by appointment , through joint sole agents Warwick Estate Agents



Tel: +44 (0)2 8960 9988
Fax: +44 (0)2 8960 9989

Email: mail@warwickestateagency.co.uk
warwickestateagents.tv | warwickestateagents.co.uk

69 Chamberlayne Road, London NW10 3ND
Tel: +44 (0)20 8960 9988 Fax: +44 (0)20 8960 9989