

Energy Efficiency Rating		Current	Potential
Very energy efficient - lower running costs			
(92 plus) A			
(81-91) B			
(69-80) C		70	78
(55-68) D			
(39-54) E			
(21-38) F			
(1-20) G			

Environmental Impact (CO ₂) Rating		Current	Potential
Very environmentally friendly - lower CO ₂ emissions			
(92 plus) A			
(81-91) B			
(69-80) C			
(55-68) D			
(39-54) E			
(21-38) F			
(1-20) G			

Russell Road, West Hendon, NW9 6AL

£1,734 PCM

Subject to Contract

- Two bedrooms
- Reception room into bay window
- Fitted stainless steel appliances
- Contemporary bathroom combined W.C
- Wooden style flooring Low voltage lighting
- Newly fitted sash windows & gas central heating

We have endeavoured to supply this information as accurate as possible. Before making an offer, buying or renting this property please seek independent or professional advice.



Tel: +44 (0)2 8960 9988
Fax: +44 (0)2 8960 9989

Email: mail@warwickstateagency.co.uk
warwickstateagents.tv | warwickstateagents.co.uk

69 Chamberlayne Road, London NW10 3ND
Tel: +44 (0)20 8960 9988 Fax: +44 (0)20 8960 9989



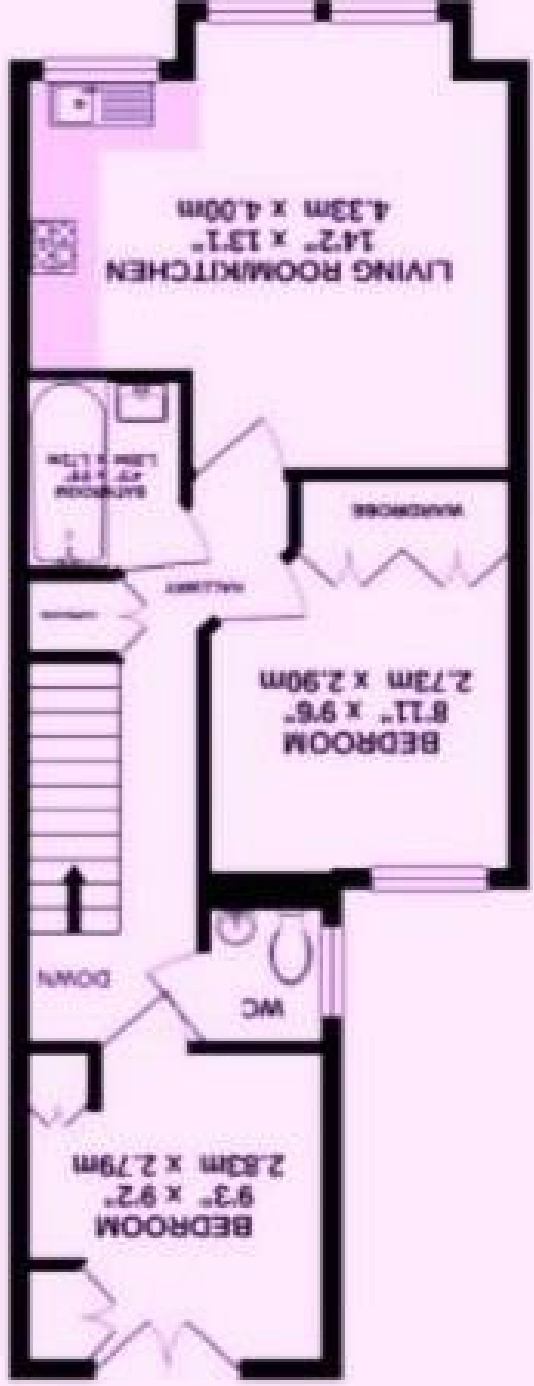
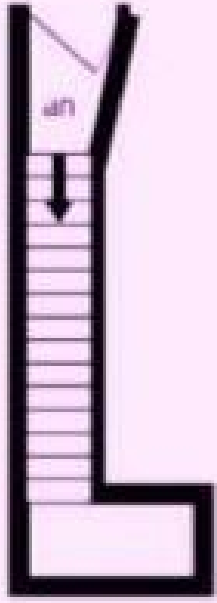
Russell Road, NW9 6A

Recently refurbished to a good standard, this bright first floor, two double bedroom apartment with wooden style floors, voltage lighting, located in this two semi detached house. Only moments from West Hendon Broadway and close to the amenities of Hendon and Brent Cross.

The property comprising of a sizeable kitchen with open plan white lacquered kitchen, contemporary bathroom and a separate living area with gas central heating and decorated with modern decor throughout.

There is also a large Sainsbury's which is a 5 minutes walking distance from the Epsom Road you have a variety of bus services to Brent Cross Shopping Centre (83) Hendon Kilburn (32) Golders Green (83) Hendon Station (183) and the N16 night bus from Victoria. Also for anyone travelling to London the M1 Motorway is also accessible and the picturesque Welsh Harp Reservoir is over 170 hectares of open water and is a valuable habitat for birds and just a short walk away.

Available now.



Tel: +44 (0)2 8960 9988
Fax: +44 (0)2 8960 9989



Email: mail@warwickestateagency.co.uk
warwickestateagents.tv | warwickestateagents.co.uk
Tel: +44 (0)20 8960 9988 Fax: +44 (0)20 8960 9989
69 Chamberlayne Road, London NW10 3ND