

Harrow Road, College Park, NW10 5BG

Asking Price £375,000

Subject to Contract

- Bright 20ft bedroom with fitted wardrobes
- Modern fitted kitchen
- Wooden style flooring
- French doors leading out to terrace from reception room
- Fully tiled bathroom
- Off street parking available under separate price

Energy Efficiency Rating		
	Current	Potential
Very energy efficient - lower running costs		
(92 plus) A		
(81-91) B		
(69-80) C	80	80
(55-68) D		
(39-54) E		
(21-38) F		
(1-20) G		

Environmental Impact (CO ₂) Rating		
	Current	Potential
Very environmentally friendly - lower CO ₂ emissions		
(92 plus) A		
(81-91) B		
(69-80) C		
(55-68) D		
(39-54) E		
(21-38) F		
(1-20) G		

We have endeavoured to supply this information as accurate as possible. Before making an offer, buying or renting this property please seek independent or professional advice.



Tel: +44 (0)2 8960 9988
Fax: +44 (0)2 8960 9989

Email: mail@warwickstateagency.co.uk
warwickstateagents.tv | warwickstateagents.co.uk

69 Chamberlayne Road, London NW10 3ND
Tel: +44 (0)20 8960 9988 Fax: +44 (0)20 8960 9989



Harrow Road, NW10 5BG

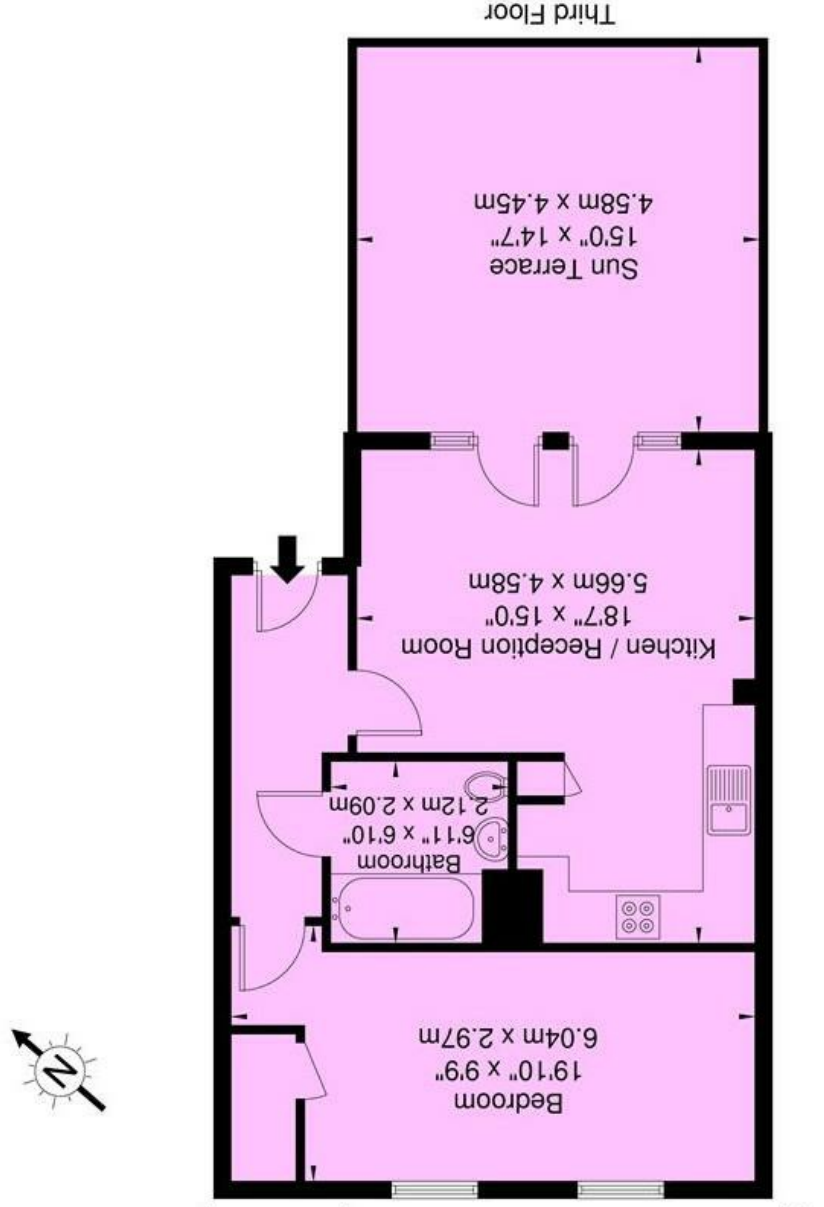
Stunning, well proportioned & bright... contemporary style one double bedroom apartment, boasting balcony & sizable private roof terrace, on the third floor of this recently built low rise development, entered via entry-phone access, benefiting from off-street parking and communal central lawns, only a stone's throw of local amenities.

The property offers 534sqft of living space, with gas central heating, comprising of French doors leading out to the secluded terrace from a sizable 18ft reception room, stainless steel appliances in modern fitted kitchen, modern fully tiled bathroom, and double glazed doors & windows throughout.

Offering a variety of local bars/cafes, restaurants, and shopping facilities at your fingertips, walking distance of both Kensal Green & Willesden Junction, over/underground train stations, numerous alternative transport links that include a short bus ride to Westfield's shopping centre and Central London.

Dugdale Court, NW10 5BG

Approx. Gross Internal Area = 49.6 sq m / 534 sq ft



B L E U
PLAN
Copyright

Ref: **BLEU**
Disclaimer : Floor plan measurements are approximate and are for illustrative purposes only. While we do not doubt the floor plan accuracy and completeness, you or your advisors should conduct a careful, independent investigation of the property in respect of monetary valuation

