

Energy Efficiency Rating	
Current	Potential
Very energy efficient - lower running costs	
(92 plus) A	84
(81-91) B	
(69-80) C	
(55-68) D	
(39-54) E	
(21-38) F	
(1-20) G	
58	

Environmental Impact (CO ₂) Rating	
Current	Potential
Very environmentally friendly - lower CO ₂ emissions	
(92 plus) A	83
(81-91) B	
(69-80) C	
(55-68) D	
(39-54) E	
(21-38) F	
(1-20) G	
52	

Huddlestone Road, Willesden Green, NW2 5DL

£3,000 PCM

Subject to Contract

- Five bedrooms
- Sizeable 25 ft Reception room
- Oak fitted kitchen with steel handles
- Family bathroom
- En suite shower combined W.C
- Private rear garden
- High ceilings
- Timber style flooring

We have endeavoured to supply this information as accurate as possible. Before making an offer, buying or renting this property please seek independent or professional advice.



Tel: +44 (0)2 8960 9988
Fax: +44 (0)2 8960 9989

Email: mail@warwickstateagency.co.uk
warwickstateagents.tv | warwickstateagents.co.uk

69 Chamberlayne Road, London NW10 3ND
Tel: +44 (0)20 8960 9988 Fax: +44 (0)20 8960 9989



Huddlestone Road, NW2 5DL

Ideal for sharers/students... four/five bedroom mid terraced two-storey period house, which has been maintained to a good level, boasting private rear garden & high ceilings, located within the heart of the local amenities.

The property offers over 1134 sq ft of living accommodation, consisting of French doors leading out to garden from a sizable 25 ft Lounge, Oak coloured fitted kitchen with steel handles, dining area, modern family bathroom, shower room combined w.c. and gas central heating throughout.

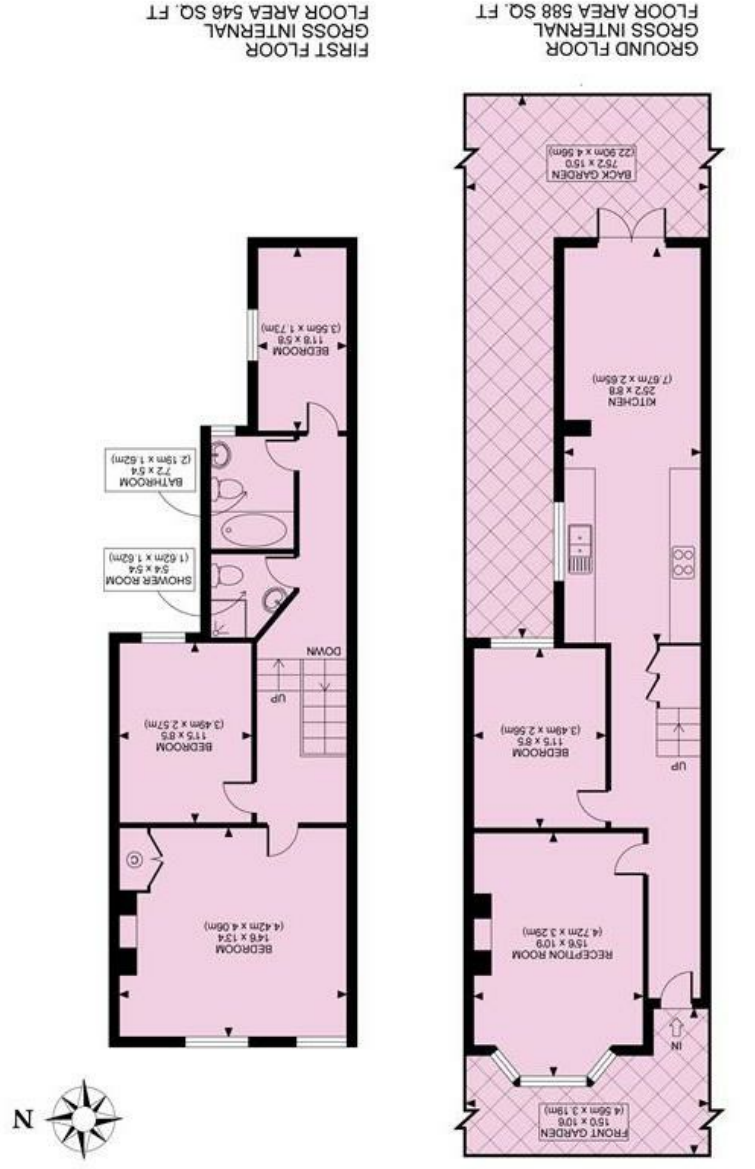
Set in a quiet residential side road, close to a variety of bars/cafes, restaurants, and shopping facilities of Willesden High Road, in easy reach of Willesden Green & Dollis Hill train stations, and numerous alternative transport links.

Available 23rd August

Tel: +44 (0)2 8960 9988
Fax: +44 (0)2 8960 9989



HUDDLESTONE ROAD, NW2
TOTAL APPROX FLOOR PLAN AREA 1134 SQ.FT. (105 SQ.M.)



www.zentuvo.co.uk
All measurements walls, doors, windows, fittings and their appliances, their size and locations are shown conventionally and are approximate only and cannot be regarded as being a representation either by the seller or his agent nor zentuvo



Email: mail@warwickestateagency.co.uk
warwickestateagents.tv | warwickestateagents.co.uk

69 Chamberlayne Road, London NW10 3ND
Tel: +44 (0)20 8960 9988 Fax: +44 (0)20 8960 9989