

Energy Efficiency Rating	
Current	Potential
Very energy efficient - lower running costs	
(92 plus) A	75
(81-91) B	
(69-80) C	
(55-68) D	
(39-54) E	
(21-38) F	
(1-20) G	
60	

Environmental Impact (CO ₂) Rating	
Current	Potential
Very environmentally friendly - lower CO ₂ emissions	
(92 plus) A	78
(81-91) B	
(69-80) C	
(55-68) D	
(39-54) E	
(21-38) F	
(1-20) G	
56	

We have endeavoured to supply this information as accurate as possible. Before making an offer, buying or renting this property please seek independent or professional advice.

The Drive, Willesden Junction, NW10 3UB

£1,400 PCM

Subject to Contract

- Two double bedrooms
- Separate kitchen
- Newly carpeted
- Rear gardens
- Gas central heating
- Patio doors to garden from reception room
- Bathroom combined W.C
- Newly decorated
- Off street parking



Tel: +44 (0)2 8960 9988
Fax: +44 (0)2 8960 9989

Email: mail@warwickstateagency.co.uk
warwickstateagents.tv | warwickstateagents.co.uk

69 Chamberlayne Road, London NW10 3ND
Tel: +44 (0)20 8960 9988 Fax: +44 (0)20 8960 9989



The Drive, NW10 3UB

Re-decorated & stylish striped timber flooring... tidy and clean two double bedroom apartment on the ground floor of this older style detached house entered via drive from Longstone Avenue opposite Roundwood Park, offering use of rear gardens and off street parking.

The property measures a generous 640 sq ft of living accommodation, with patio doors leading directly out to rear gardens from reception room, door to the gardens from the kitchen too, and well maintained fitted bathroom combined w.c.

Situated at the Longstone Avenue end of Roundwood Road, only a stone's throw of the attractive green open spaces of Roundwood Park with its organic café, a variety of local schools, additional amenities and numerous transport links close at hand.

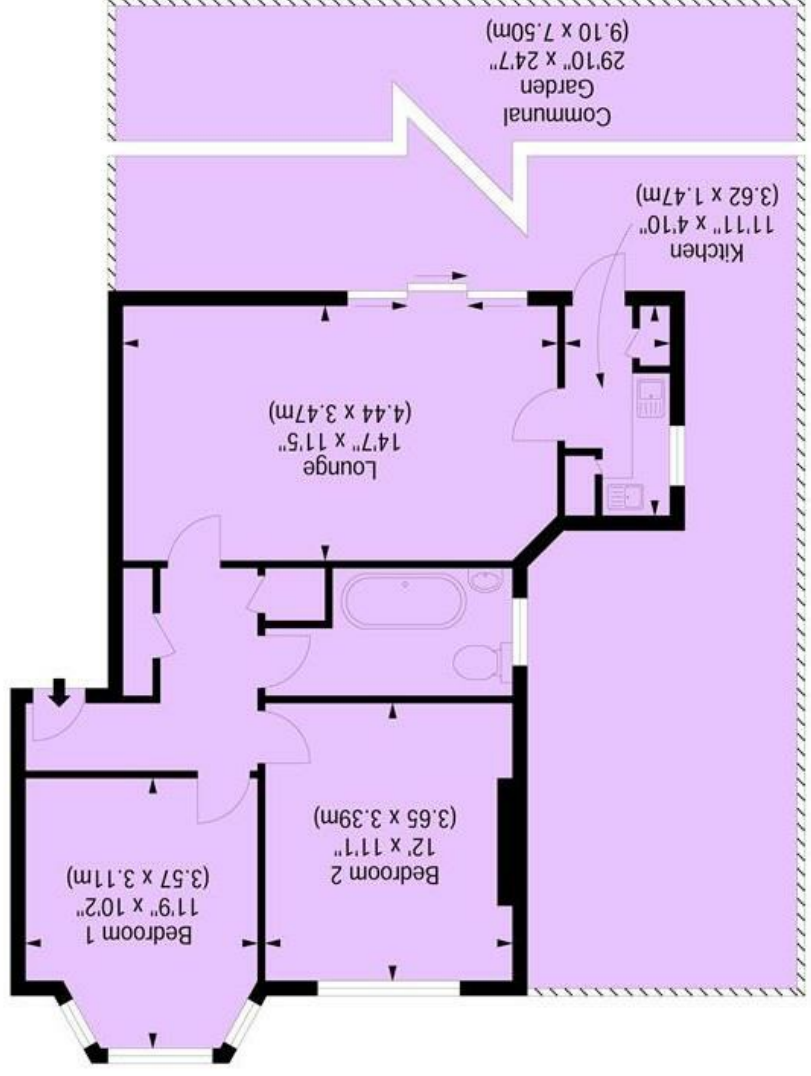
Available now

Tel: +44 (0)2 8960 9988
Fax: +44 (0)2 8960 9989



The Drive, Longstone Avenue, NW10 3UB

Approximate Gross Internal Area 641 sq ft / 59.55 sq m



Ref
Copyright ZION MEDIA PHOTOGRAPHY
Disclaimer : Floor plan measurements are approximate and are for illustrative purposes only. While we do not doubt the floor plan accuracy and completeness, you or your advisors should conduct a careful, independent investigation of the property in respect of monetary valuation

Email: mail@warwickestateagency.co.uk
warwickestateagents.tv | warwickestateagents.co.uk
99 Chamberlayne Road, London NW10 3ND
Tel: +44 (0)20 8960 9988 Fax: +44 (0)20 8960 9989