

Energy Efficiency Rating		
	Current	Potential
Very energy efficient - lower running costs		
(92 plus) A		
(81-91) B		
(69-80) C		
(55-68) D		
(39-54) E		
(21-38) F		
(1-20) G		

Environmental Impact (CO ₂) Rating		
	Current	Potential
Very environmentally friendly - lower CO ₂ emissions		
(92 plus) A		
(81-91) B		
(69-80) C		
(55-68) D		
(39-54) E		
(21-38) F		
(1-20) G		

Ladbroke Grove, London, W10 5LP

£1,300 PCM

Subject to Contract

- Double bedroom into bay
- Door to garden from kitchen
- Private rear garden
- Timber style flooring
- Sizable reception room
- Three piece bathroom suit
- Own entrance

We have endeavoured to supply this information as accurate as possible. Before making an offer, buying or renting this property please seek independent or professional advice.



Tel: +44 (0)2 8960 9988
Fax: +44 (0)2 8960 9989

Email: mail@warwickstateagency.co.uk
warwickstateagents.tv | warwickstateagents.co.uk

69 Chamberlayne Road, London NW10 3ND
Tel: +44 (0)20 8960 9988 Fax: +44 (0)20 8960 9989



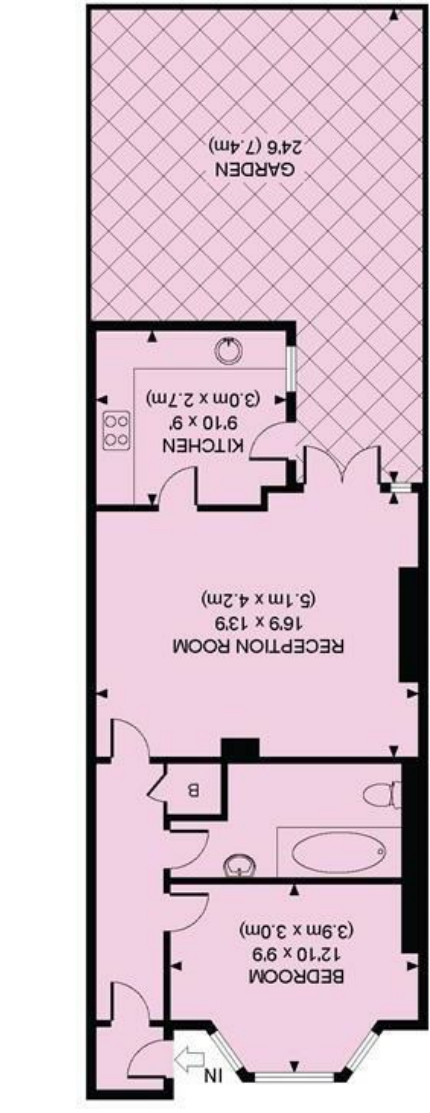
Very rare... a spacious, own entrance, one double bedroom apartment with use of a private rear garden, set in a well maintained period building; only a stones throw of Portobello market.

The property boasts timber style floorings throughout, and measures over 565sqft of accommodation, benefiting from French doors leading out to garden from reception room, fitted kitchen with wishbone handles and door to garden, bathroom combined w.c., and additional benefits include timber style floorings and gas central heating.

Ladbroke Grove, a sought after broad tree lined avenue, in the heart of this buzzing, trendy metropolis, offering an abundance of bars/cafes, restaurants, variety of shopping facilities, and numerous transport links which include Ladbroke Grove Circle/Hammersmith & City lines.

Ladbroke Grove, W10 5LP

Tel: +44 (0)2 8960 9988
 Fax: +44 (0)2 8960 9989



LADBROKE GROVE, W10
 TOTAL APPROX. FLOOR AREA 565 SQ. FT. (52.5 SQ. M.)
 BASEMENT



All measurements walls, doors, windows, fitting and their appliances, their size and locations are shown conventionally and are approximate only and cannot be regarded as being a representation either by the seller or his agent nor zenluvo
 www.zenluvo.co.uk

Email: mail@warwickestateagency.co.uk
 warwickestateagents.tv | warwickestateagents.co.uk
 69 Chamberlayne Road, London NW10 3ND
 Tel: +44 (0)20 8960 9988 Fax: +44 (0)20 8960 9989