



WARWICK ESTATE AGENTS  
All measurements walls, doors, windows, fitting and their appliances, their size and locations are shown conventionally and are approximate only and cannot be regarded as being a representation either by the seller or his agent nor zentuvo www.zentuvo.co.uk  
zentuvo



Energy Efficiency Rating		Current	Potential
Very energy efficient - lower running costs			
(92 plus) A			
(81-91) B			
(69-80) C		70	78
(55-68) D			
(39-54) E			
(21-38) F			
(1-20) G			
Not energy efficient - higher running costs			
<b>England &amp; Wales</b>	EU Directive 2002/91/EC		

Environmental Impact (CO <sub>2</sub> ) Rating		Current	Potential
Very environmentally friendly - lower CO <sub>2</sub> emissions			
(92 plus) A			
(81-91) B			
(69-80) C		64	74
(55-68) D			
(39-54) E			
(21-38) F			
(1-20) G			
Not environmentally friendly - higher CO <sub>2</sub> emissions			
<b>England &amp; Wales</b>	EU Directive 2002/91/EC		

Ladbroke Grove, Ladbroke Grove, W10 5LP

£1,600 PCM

Subject to Contract

- Two bedrooms
- Large sash window in Reception room
- kitchen with stainless steel appliances
- White three piece bathroom
- High ceilings
- Sash windows





### Ladbroke Grove, W10 5LP

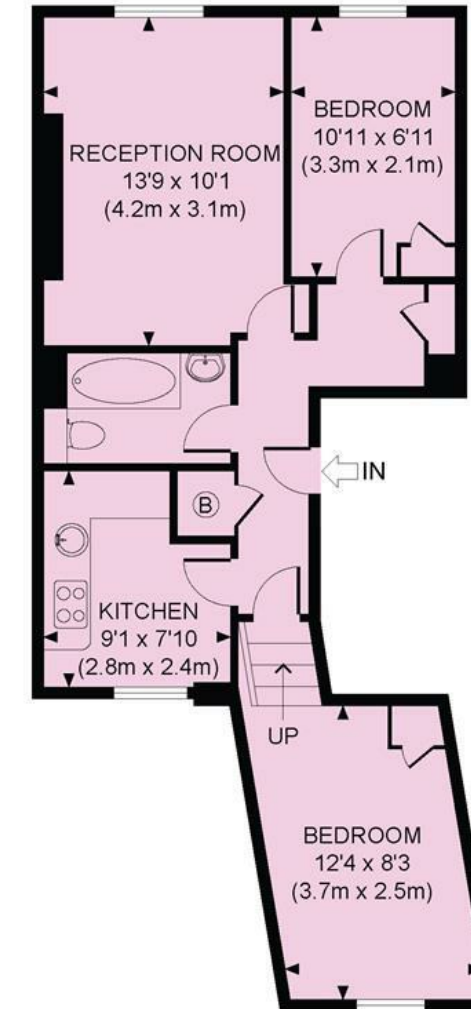
Fantastic location... bright and tidy two bedroom apartment, with high ceilings set on the first floor of a well maintained period building; only a stones throw of Portobello market.

The property measures over 510sqft accommodation, boasting a large sash window and picture rails in reception room, fitted kitchen with stainless steel fitted appliances, white three piece bathroom, and boasting high ceilings and gas central heating.

Ladbroke Grove, a sought after broad tree lined avenue, in the heart of this buzzing, trendy metropolis, offering an abundance of bars/cafes, restaurants, variety of shopping facilities, which include Portobello Market, and numerous transport links, closest of which Ladbroke Grove Circle/Hammersmith & City lines.



LADBROKE GROVE, W10  
TOTAL APPROX. FLOOR AREA 510 SQ. FT. (47.4 SQ. M.)  
FIRST FLOOR



All measurements walls, doors, windows, fitting and their appliances, their size and locations are shown conventionally and are approximate only and cannot be regarded as being a representation either by the seller or his agent nor zentuvo  
www.zentuvo.co.uk

**Tenure**

**Price** £1,600 PCM Subject to Contract

Viewing by appointment , through joint sole agents Warwick Estate Agents



Tel: +44 (0)2 8960 9988  
Fax: +44 (0)2 8960 9989

Email: mail@warwickestateagency.co.uk  
warwickestateagents.tv | warwickestateagents.co.uk

69 Chamerlayne Road, London NW10 3ND  
Tel: +44 (0)20 8960 9988 Fax: +44 (0)20 8960 9989