

Energy Efficiency Rating		Current	Potential
Very energy efficient - lower running costs			
(92 plus) A			
(81-91) B			
(69-80) C		71	80
(55-68) D			
(39-54) E			
(21-38) F			
(1-20) G			

Environmental Impact (CO ₂) Rating		Current	Potential
Very environmentally friendly - lower CO ₂ emissions			
(92 plus) A			
(81-91) B			
(69-80) C		64	67
(55-68) D			
(39-54) E			
(21-38) F			
(1-20) G			

Harrow Road, College Park, NW10 5NB

£1,450 Per Month

Subject to Contract

- Double bedroom
- Sizable reception room
- Entry-phone access
- Timber style floorings
- Gated off street parking for several cars

We have endeavoured to supply this information as accurate as possible. Before making an offer, buying or renting this property please seek independent or professional advice.



Tel: +44 (0)2 8960 9988
Fax: +44 (0)2 8960 9989

Email: mail@warwickstateagency.co.uk
warwickstateagents.tv | warwickstateagents.co.uk

69 Chamberlayne Road, London NW10 3ND
Tel: +44 (0)20 8960 9988 Fax: +44 (0)20 8960 9989



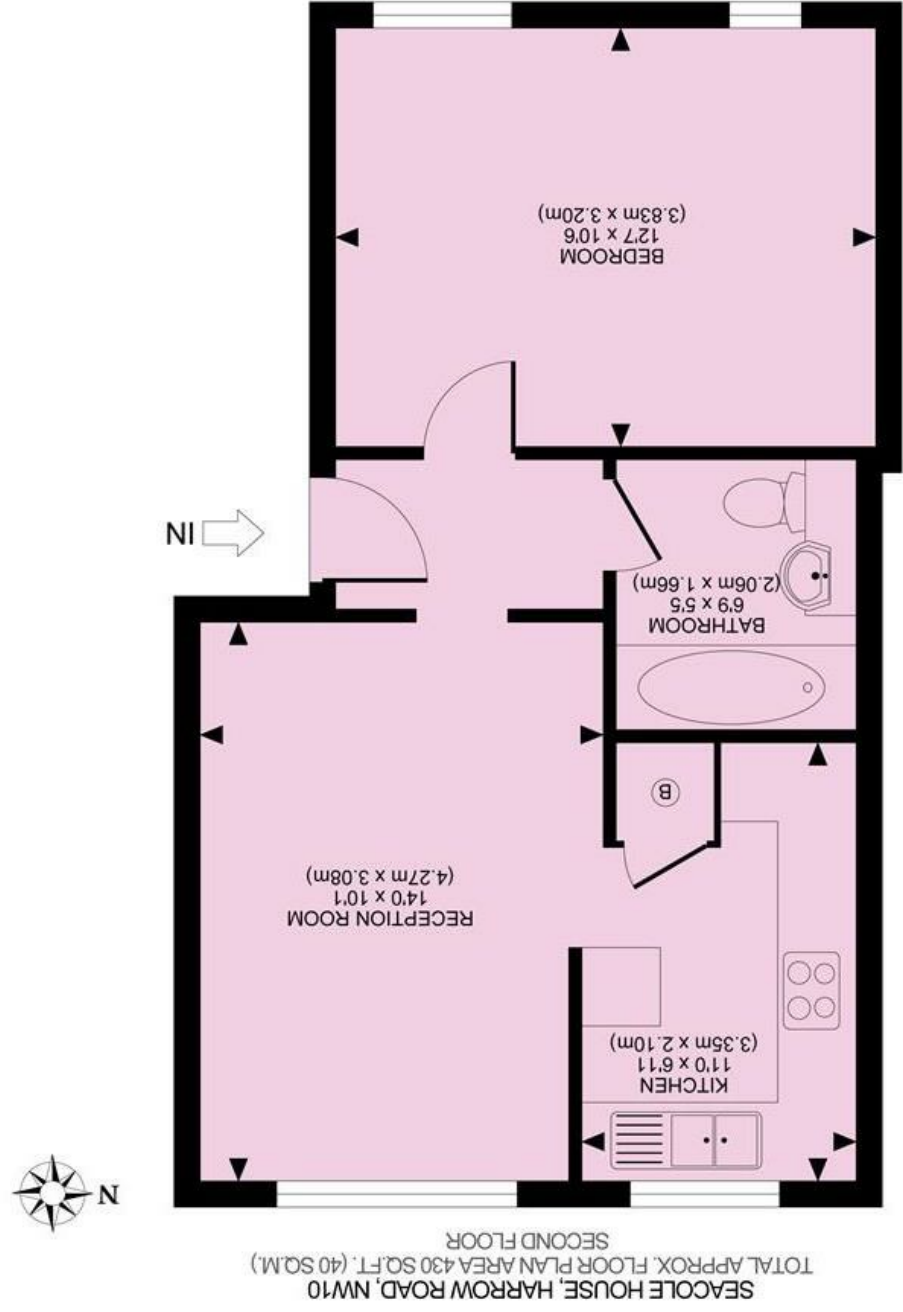
Harrow Road, NW10 5NB

Well-proportioned one double bedroom apartment, completed to a good standard, on the second floor of this small modern private block, entered via entry-phone access, surrounded by communal lawns with patio walkways, located within close proximity of local amenities.

The property offers over 430 sq ft of living accommodation, timber style floors throughout, comprising of reception room, separate fitted kitchen with white lacquered units & stainless steel appliances, Limestone effect tiled bathroom combined W.C with power shower and additional benefits include security gated off street parking to rear for two cars.

Located within easy reach of both Kensal Green & Willesden Junction (Bakerloo Line) train stations, a variety of local shops, bars/cafes, restaurants, and numerous alternative transport links. Available from the 11th of April

Tel: +44 (0)2 8960 9988
Fax: +44 (0)2 8960 9989



All measurements walls, doors, windows, fittings and their appliances, their size and locations are shown conventionally and are approximate only and cannot be regarded as being a representation either by the seller or his agent nor zentuvo
www.zentuvo.co.uk

Email: mail@warwickestateagency.co.uk
Tel: +44 (0)20 8960 9988
Fax: +44 (0)20 8960 9989
69 Chamberlayne Road, London NW10 3ND
warwickestateagents.tv | warwickestateagents.co.uk