



Bristol SU Lettings

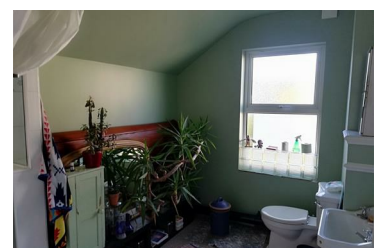
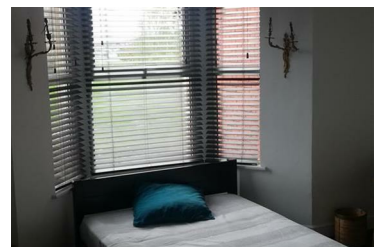


130 Avonvale Road, Bristol, BS5 9RX

£690 Per Month



Bristol SU Lettings is pleased to present one lovely double rooms living with the resident landlady, available for students or UOB Staff - ideal for international and mature students. The house includes a communal area with an open fire, a terraced garden, a bathroom with additional WC and a kitchen. The landlady is looking for lodgers to join her in her home. Available for move in now all bills included. 1x £690pcm.



- ** 1 ROOMS AVAILABLE 1x £690 **STUDENT LET
- King-size beds!
- Good bus and rail links to both UOB and UWE
- Well kept terrace garden
- Great location close to Feeder Canal and Netham Park
- 2 X Lovely double rooms living with resident landlady
- All bills included
- Close to amenities on Church Road
- Available NOW