



# Greenfields



## Lancaster Square, Bourne Court, HA4

£1,830 Per Month

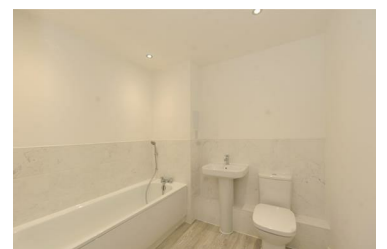


Parking included with this two double bedroom ground floor apartment which is ideally located just 2 minutes from South Ruislip station and all the local amenities on your door step. Inside, this apartment offers a fully fitted kitchen with plenty of storage space.

The living/dining area opens out onto a private terrace which allows space for table and chairs, perfect for enjoying a warm summer evening and allows plenty of light to flood the room.

There are two double bedrooms with built in wardrobes. The master bedroom has an en-suite shower room. There is a further bathroom with a panel enclosed bath tub. The kitchen is modern with a range of built in appliances.

- Flat
- Studio Flat
- Gas Central Heating



115 Victoria Road, Ruislip, Middlesex, HA4 9BN

Tel: 01895 628 560 Email: [info@greenfieldsproperty.co.uk](mailto:info@greenfieldsproperty.co.uk) [www.greenfieldsproperty.co.uk](http://www.greenfieldsproperty.co.uk)