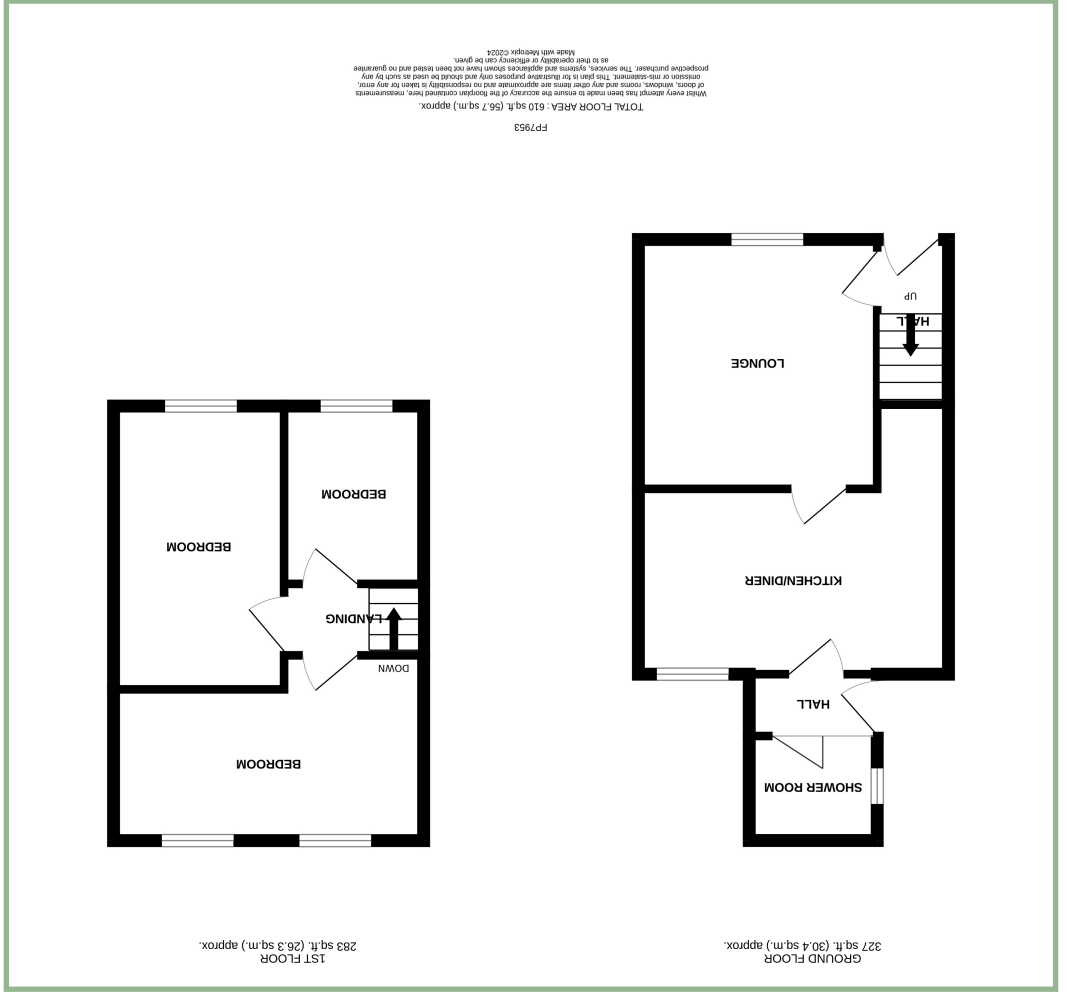


We endeavor to make our sales details accurate and reliable but they should

Fletcher & Poole



Three Bedroom Mid Terrace In Need Of General Refurbishment

Description

A three bedroom former Quarryman's cottage situated in a slightly elevated position within walking distance to the village centre and the beach.

The accommodation which is in need of updating comprises: Hallway, Lounge, kitchen/diner, rear hall area with access to the shower room and door to the rear garden.

To the first floor: Three bedrooms.

UPVC double glazing.

To the outside there is a small sloped grassed area located on the other side of the communal pathway and a rear courtyard area on two levels with rear gated access.

- ✓ THREE BEDROOM QUARRYMAN'S TERRACE COTTAGE
- ✓ SITUATED IN AN ELEVATED POSITION
- ✓ IN NEED OF REFURBISHMENT
- ✓ NO CHAIN
- ✓ FREEHOLD

Hallway

4' 10" x 3' 2" 1.47m x 0.96m

Lounge

10' 11" x 11' 5" 3.32m x 3.48m



Kitchen

14' 7" x 8' 6" 4.44m x 2.59m



Inner Hallway

5' 9" x 2' 6" 1.75m x 0.76m

Shower Room

5' 6" x 4' 8" 1.67m x 1.42m



Landing

5' 1" x 6' 4" 1.55m x 1.93m

Bedroom One

13' x 8' 3.96m x 2.43m



Bedroom Two

14' 11" x 7' 1" 4.54m x 2.16m



Bedroom Three

8' 2" x 6' 4" 5.57m x 3.71m



Location

Located in the coastal resort of Penmaenmawr with its promenade, sandy beach, bowling green, community centre, all weather pitch, medical centre, primary school, railway station, local shops and hostelrys and conveniently placed for the A55 dual carriageway. The medieval walled town of Conwy is some 5 miles distant whilst the University City of Bangor is 12 miles.

Directions

From our Conwy office turn left through the archway and follow the road until you reach the A55 Expressway. Follow the signs for Bangor and then take the Penmaenmawr turn off. Proceed through the centre of the village, continue for a short distance, turn left into Chapel Street, proceed up the hill bear right into Upper Maenan, continue until you reach Water Street, where number 21 can be found on the left.

Council Tax Band: B (provided on www.voa.gov.uk)
Energy Efficiency Rating: TBC

3 Mid Terrace Home

21 Water Street
Penmaenmawr
LL34 6PB

NO CHAIN

£128,000

Reference Number: FP7953
20/2/2024

Fletcher & Poole,
3 Lancaster Square,
Conwy, LL32 8HT

Registered Company
Number 4687367

Valuation

Thinking of moving in the near future please do not hesitate to ask for a FREE sales valuation

Viewing

By appointment contact:

tel: 01492 583100

fax: 01492 583616

email: conwy@fletcherpoole.com

web: www.fletcherpoole.com

