



38 John Road

Gorleston, Great Yarmouth, NR31 6LF

Offers In Excess Of £190,000



With fantastic original and traditional style features we are delighted to offer this bay fronted, hall entrance two bedroom end terrace house sitting in this convenient location. The property has a large lounge/dining room, kitchen and conservatory. On the first floor both bedrooms and bathroom lead off landing. Gas central heating and sealed unit double glazing. Attractive approx. west facing garden.



Entrance Hall

Stairs to landing, door to front, radiator.

Lounge/Diner 26'2" x 11'2"ax 10'7" in (8 x 3.42max 3.25min)

Ornamental fireplace with inset tiles, gas coal effect fire with inset tiles, bay double glazed window to front aspect, two radiators.

Kitchen 8'8" x 8'7" (2.65 x 2.63)

Base & wall units with worktops, electric hob, electric double oven, part tiled walls, sink with drainer, radiator, under stair cupboard, integrated fridge, integrated freezer.

Conservatory 8'10" x 4'7" (2.7 x 1.4)

Door to rear, radiator.

Landing

Pull down loft ladder leading to part boarded loft area with light, both bedrooms and bathroom leading off.

Bedroom 1 13'10" x 11'3" (4.24 x 3.45)

Traditional style fireplace, storage cupboard, double glazed window to front aspect, radiator.

Bedroom 2 12'2" x 8'10" (3.72 x 2.71)

Double glazed window to rear aspect, radiator.

Bathroom

Freestanding bath, hand basin, shower in cubicle, low level WC, opaque double glazed window to rear aspect, heated towel rail, inset ceiling lights.

Outside

To the front there is a forecourt. To the rear an approx. west facing rear garden laid to lawn with bushes & shrubs, utility room 2.94m x 1m housing the plumbing for washing machine.

Tenure

Freehold

Services

Mains water, electricity, gas, drainage.

Council Tax

Band B

EPC

TBC

Location

Gorleston on Sea is a coastal town 2 miles from Great Yarmouth centre and has a varied selection of local shops * Golf Course * Modern District hospital * Schools for all ages * Library * Regular bus services to the main shopping areas and a sandy beach.

Directions

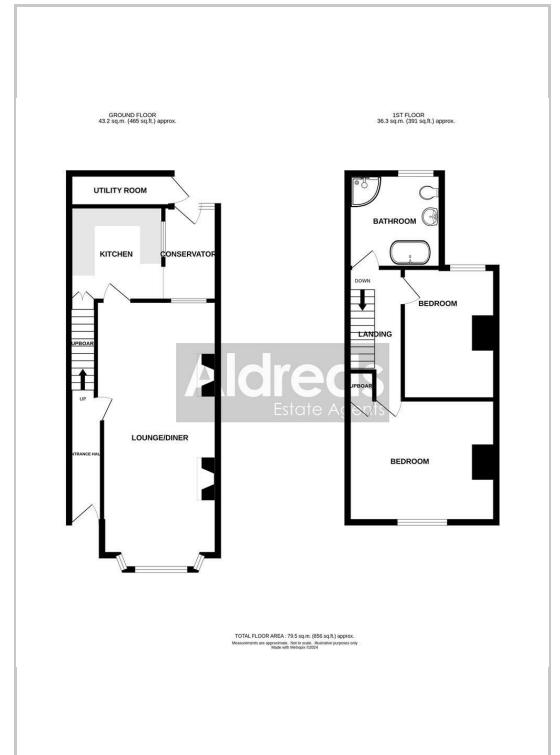
From the Gorleston office head south along the High Street, turn right in to Palmer Road, turn right in to John Road.

Ref G18023/03/24

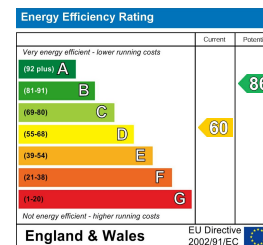
Area Map



Floor Plans



Energy Efficiency Graph



Disclaimer

These particulars are issued on an understanding that all negotiations shall be conducted through Messrs. Aldreds. Please note: Messrs. Aldreds for themselves and for the vendors or lessors of this property whose agents they are given notice that: 1. Particulars are set out as a general outline only for guidance of intending purchasers or lessees, and do not constitute nor constitute part of, an offer or contract. 2. All descriptions, dimensions, references to condition and necessary permissions for use and occupation, and other details are given without responsibility and any intending purchasers or tenants should not rely on them as statements or representations of fact but must satisfy themselves by inspection or otherwise as to the correctness of each of them. 3. No person in the employment of Messrs. Aldreds has any authority to make or give any representation or warranty whatever in relation to this property. 4. If you are proposing to visit the property and are travelling some distance please check with Aldreds on the issue of availability prior to travelling. 5. Aldreds Property Consultants and associated services may offer additional services to the prospective purchaser for which they will be entitled to receive a commission.

Aldreds are pleased to be working with Mortgage Advice Bureau. They're an award-winning mortgage broker with over 1,400 advisers across the UK, and have access to over 12,000 mortgage products from over 90 lenders. Aldreds Estate Agents Ltd receive a commission of £200 on each completed case. Your home may be repossessed if you do not keep up repayments on your mortgage. There may be a fee for mortgage advice. The actual amount you pay will depend upon your circumstances. The fee is up to 1%, but a typical fee is 0.3% of the amount borrowed. Mortgage Advice Bureau is a trading name of Mortgage Seeker Limited which is an appointed representative of Mortgage Advice Bureau Limited and Mortgage Advice Bureau (Derby) Limited which are authorised and regulated by the Financial Conduct Authority. Mortgage Seeker Limited Registered Office: Lovewell Blake, Sixty Six North Quay, Great Yarmouth, Norfolk, NR30 1HE. Registered in England Number: 03721415. 6. Potential purchasers should check with their providers that the broadband and mobile phone coverage they would require is available.

149 High Street, Gorleston, Norfolk, NR31 6RB

Tel: 01493 664600 Email: gorleston@aldreds.co.uk <https://www.aldreds.co.uk/>

Registered in England Reg. No. 08945751 Registered Office: 66 North Quay, Great Yarmouth, Norfolk NR30 1HE Directors: Mark Duffield B.S.c. FRICS. Dan Crawley MNAEA Paul Lambert MNAEA