



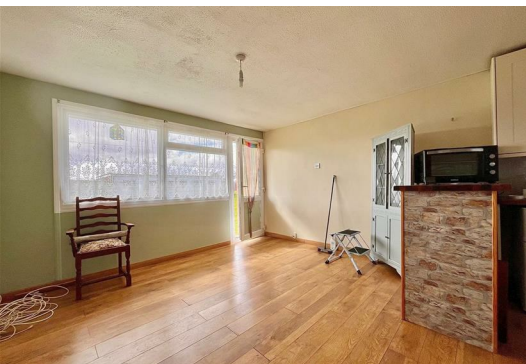
25 Florida Estate

Hemsby, Great Yarmouth, NR29 4HP

£29,950



Located in a quiet location on the edge of this popular site, Aldreds are pleased to offer this attractively presented mid terraced holiday chalet with a south facing aspect. The property has an open plan kitchen/lounge with modern fitted kitchen, two bedrooms and bathroom. The chalet also benefits from double glazed windows and is offered with a recently renewed lease. An early viewing is strongly recommended.



Open Plan Kitchen/Living Room

Living Room 12'9" x 12'4" (3.90 x 3.77)

Double glazed window to front aspect, part double glazed pvc entrance door, wood effect laminate flooring, built in storage cupboard, doors leading off and open access to:

Kitchen Area 6'0" x 5'6" (1.83 x 1.68)

Fitted kitchen with cream wall and matching base units with solid wood work surfaces over, ceramic butlers sink, recess for fridge, part tiled walls, wood effect laminate flooring, breakfast bar area, double glazed window to rear aspect.

Bedroom 1 9'6" x 9'1" maximum (2.90 x 2.77 maximum)

Double glazed window to rear aspect, wall mounted electric heater.

Bedroom 2 9'1" x 8'6" (2.77 x 2.61)

Including a built in cupboard, double glazed window to front aspect.

Bathroom

White suite comprising cast iron panelled bath with electric shower over, pedestal wash basin, low level wc, part tiled walls, two frosted double glazed windows to rear aspect.

Outside

To the front of the property is a part covered terrace beyond which are the communal lawned gardens and nearby parking.

Tenure

Leasehold.

The lease term expires in 2069

Total site fees for 2024-2025 are approximately £1700

This figure includes ground rent, site maintenance, water, sewerage and refuse collection.

Site opens from 1st March to 31st October.

No dogs allowed.

Services

Mains water, electric and drainage.

Council Tax

Great Yarmouth Borough Council - Band 'A'

Location

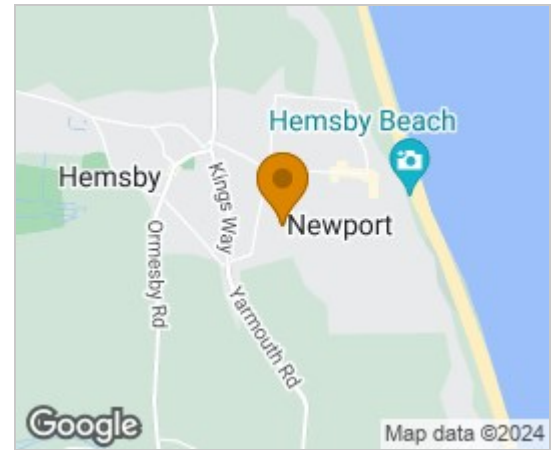
Hemsby is a coastal village approximately 7 miles north of Great Yarmouth. The tourist-based part of the village lies along Beach Road and is commonly known as Hemsby Beach. At the beach end of the road are a number of cafes, shops and amusement arcades, ten-pin bowling, bingo, a play area and many different machines. A variety of seaside-style cafes and restaurants are available, offering sit-down meals, take-away fish and chips and Chinese food. Fun fairs, crazy golf courses and children's rides also feature on a number of sites along the street.

Directions

From the Yarmouth office head north along the A149 Caister Road, continue past the Yarmouth Stadium, at the roundabout turn left onto the Caister Bypass, continue over the next roundabout into Jack Chase Way, continue over the next roundabout into Scratby Road, continue into Yarmouth Road, turn right into Newport Road, continue for approximately 200 yards turn left into Market Lane, take the first turning on the right into the Florida Holiday Park and the chalet can be found in one of the blocks immediately on the right hand side.

Ref: Y12027/04/24/CF

Area Map



Floor Plans



Disclaimer

These particulars are issued on an understanding that all negotiations shall be conducted through Messrs. Aldreds. Please note: Messrs. Aldreds for themselves and for the vendors or lessors of this property whose agents they are given notice that: 1. Particulars are set out as a general outline only for guidance of intending purchasers or lessees, and do not constitute nor constitute part of, an offer or contract. 2. All descriptions, dimensions, references to condition and necessary permissions for use and occupation, and other details are given without responsibility and any intending purchasers or tenants should not rely on them as statements or representations of fact but must satisfy themselves by inspection or otherwise as to the correctness of each of them. 3. No person in the employment of Messrs. Aldreds has any authority to make or give any representation or warranty whatever in relation to this property. 4. If you are proposing to visit the property and are travelling some distance please check with Aldreds on the issue of availability prior to travelling. 5. Aldreds Property Consultants and associated services may offer additional services to the prospective purchaser for which they will be entitled to receive a commission.

Aldreds are pleased to be working with Mortgage Advice Bureau. They're an award-winning mortgage broker with over 1,400 advisers across the UK, and have access to over 12,000 mortgage products from over 90 lenders. Aldreds Estate Agents Ltd receive a commission of £200 on each completed case. Your home may be repossessed if you do not keep up repayments on your mortgage. There may be a fee for mortgage advice. The actual amount you pay will depend upon your circumstances. The fee is up to 1%, but a typical fee is 0.3% of the amount borrowed. Mortgage Advice Bureau is a trading name of Mortgage Seeker Limited which is an appointed representative of Mortgage Advice Bureau Limited and Mortgage Advice Bureau (Derby) Limited which are authorised and regulated by the Financial Conduct Authority. Mortgage Seeker Limited Registered Office: Lovewell Blake, Sixty Six North Quay, Great Yarmouth, Norfolk, NR30 1HE. Registered in England Number: 03721415. 6. Potential purchasers should check with their providers that the broadband and mobile phone coverage they would require is available.

17 Hall Quay, Great Yarmouth, Norfolk, NR30 1HJ

Tel: 01493 844891 Email: yarmouth@aldreds.co.uk <https://www.aldreds.co.uk/>

Registered in England Reg. No. 08945751 Registered Office: 66 North Quay, Great Yarmouth, Norfolk NR30 1HE Directors: Mark Duffield B.S.c. FRICS. Dan Crawley MNAEA Paul Lambert MNAEA