



Aldreds
Estate Agents

34 Yarmouth Road

Caister-On-Sea, Great Yarmouth, NR30 5AA

Offers In Excess Of £175,000



3



1



1



C

34 Yarmouth Road

Aldreds are pleased to offer this superb renovated mid terraced house in the heart of the village close to all amenities. The property has been refurbished from top to bottom with new grey double glazed windows, gas central heating, damp proofing and re-plastering, new quality kitchen and bathroom fittings, new floor coverings and re-decoration throughout. The property would make an ideal turn key first home with stunning accommodation comprising of an open plan kitchen/living room with built in appliances, rear lobby, porch/utility, ground floor shower room, first floor landing serving three good size bedrooms. Outside is a forecourt and generous west facing rear garden which has been landscaped with paving and artificial grass. An early viewing is strongly recommended.

Open Plan Kitchen/Living Room

20'5" x 11'9" (6.24 x 3.60)

New grey double glazed pvc entrance door, attractive oak finish flooring, wall mount tv point, double glazed window to front aspect, stairs to first floor with open under stairs recess, quality navy blue/grey kitchen with wall and matching base units with square edge sparkle worktops over, breakfast bar seating area, built in electric oven with four ring ceramic hob and extractor hood over, grey single drainer cast sink with mixer tap, built in wine store, recessed spot lights, part tiled walls, double glazed window in to the porch, oak veneered/glazed door to:

Rear Lobby

Quality oak effect flooring, power point with space for a fridge/freezer, doors leading to:

Shower Room

6'7" x 4'8" (2.02 x 1.43)

Quality white suite comprising grey vanity unit with inset ceramic sink with mixer tap, adjacent low level wc with concealed cistern, walk in sparkle effect grey aqua panelled shower cubicle with mains fed twin shower head shower, extractor fan, frosted double glazed window to rear aspect, chrome towel rail/radiator, recessed spot lights, tiled flooring.

Porch/Utility

4'11" x 3'10" (1.50 x 1.17)

Tiled flooring, power point with space and plumbing for a washing machine, frosted double glazed window and part frosted double glazed door to rear.

First Floor Landing

New fitted carpet, mains smoke detector, oak veneered doors leading off to:

Bedroom 1

10'8" x 8'11" (3.26 x 2.74)

Including the chimney breast plus over stairs wardrobe cupboard, new fitted carpet, radiator, access to the loft space, double glazed window to front aspect.





Bedroom 2

9'1" maximum x 8'3" maximum (2.78 maximum x 2.53 maximum)

Including the small corner chimney breast, new fitted carpet, radiator, double glazed window to rear aspect.

Bedroom 3

11'5" x 4'7" (3.48 x 1.40)

Including the corner cupboard housing the new ideal gas combination boiler, new fitted carpet, radiator, double glazed window to rear aspect.

Outside

To the front of the property is a walled forecourt with outside modern lighting. To the rear is a small courtyard with wrought iron gate leading beyond to the pedestrian service passageway which provides access beyond to a superb landscaped low maintenance garden which has been designed for ease of maintenance with paved patio and central artificial grass, timber shed. The rear garden faces a westerly direction and is fully enclosed with a gated access.

Tenure

Freehold

Servcies

Mains water, electric, gas and drainage.

Council Tax

Great Yarmouth Borough Council - Band 'A'

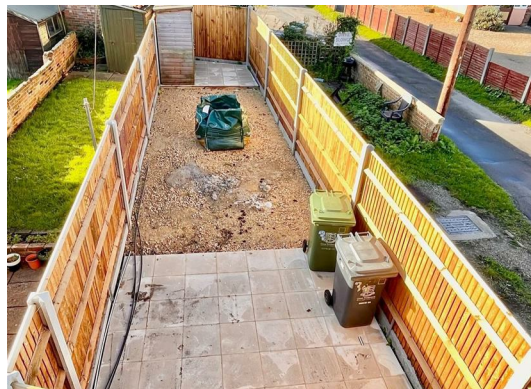
Location

Caister-on-Sea is a popular coastal village approximately 3 miles north of Great Yarmouth * There are a variety of local shops, pubs and restaurants * Post Office * First, Middle and High schools * Golf Course * Regular bus services to Great Yarmouth * Caister also boasts Roman Ruins * a sandy beach and its own Historic Castle.

Directions

From our Great Yarmouth Office, proceed North along the A149 Caister Road, past the Yarmouth Stadium, at the roundabout take the second exit straight across on to Yarmouth Road. Pass Tesco and after a few hundred yards the property can be found on the left hand side.

Ref: Y11925/11/23/CF



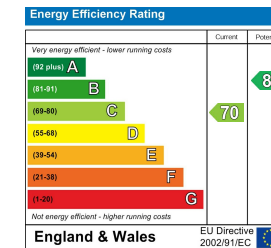
Floor Plan



Area Map



Energy Efficiency Graph



Viewing

Please contact our Aldreds Great Yarmouth Office on 01493 844891 if you wish to arrange a viewing appointment for this property or require further information.

Disclaimer

These particulars are issued on an understanding that all negotiations shall be conducted through Messrs. Aldreds. Please note: Messrs. Aldreds for themselves and for the vendors or lessors of this property whose agents they are given notice that: 1. Particulars are set out as a general outline only for guidance of intending purchasers or lessees, and do not constitute nor constitute part of, an offer or contract. 2. All descriptions, dimensions, references to condition and necessary permissions for use and occupation, and other details are given without responsibility and any intending purchasers or tenants should not rely on them as statements or representations of fact but must satisfy themselves by inspection or otherwise as to the correctness of each of them. 3. No person in the employment of Messrs. Aldreds has any authority to make or give any representation or warranty whatever in relation to this property. 4. If you are proposing to visit the property and are traveling some distance please check with Aldreds on the issue of availability prior to traveling. 5. Aldreds Property Consultants and associated services may offer additional services to the prospective purchaser for which they will be entitled to receive a commission.

Aldreds are pleased to be working with Mortgage Advice Bureau. They're an award-winning mortgage broker with over 1,400 advisers across the UK, and have access to over 12,000 mortgage products from over 90 lenders. Aldreds Estate Agents Ltd receive a commission of £200 on each completed case. Your home may be repossessed if you do not keep up repayments on your mortgage. There may be a fee for mortgage advice. The actual amount you pay will depend upon your circumstances. The fee is up to 1%, but a typical fee is 0.3% of the amount borrowed. Mortgage Advice Bureau is a trading name of Mortgage Seeker Limited which is an appointed representative of Mortgage Advice Bureau Limited and Mortgage Advice Bureau (Derby) Limited which are authorised and regulated by the Financial Conduct Authority. Mortgage Seeker Limited Registered Office: Lovewell Blake, Sixty Six North Quay, Great Yarmouth, Norfolk, NR30 1HE. Registered in England Number: 372141. 6. Potential purchasers should check with their providers that the broadband and mobile phone coverage they would require is available.

17 Hall Quay, Great Yarmouth, Norfolk, NR30 1HJ
Tel: 01493 844891 Email: yarmouth@aldreds.co.uk <https://www.aldreds.co.uk/>

Registered in England Reg. No. 08945751 Registered Office: 66 North Quay, Great Yarmouth, Norfolk NR30 1HE Directors: Mark Duffield B.S.c. FRICS. Dan Crawley MNAEA Paul Lambert MNAEA