



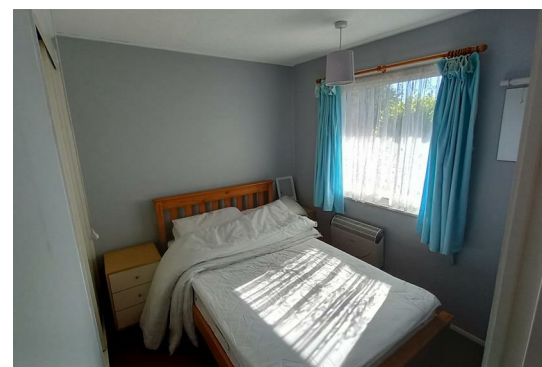
471 Sundowner Holiday Park Newport Road

Hemsby, Great Yarmouth, NR29 4NW

£23,000



Aldreds are pleased to offer this well presented, southerly facing end terraced holiday chalet sold equipped with furnishings and situated on this quiet popular coastal village site located in the Newport area of Hemsby. The chalet offers accommodation including living room, kitchenette, two bedrooms and bathroom. The property also benefits from uPVC sealed unit double glazed windows. Outside there are communal lawned gardens and nearby car parking.



Living Room 11'8" x 11'5" (3.57 x 3.5)

uPVC entrance door to front, uPVC double glazed window to front aspect, meter storage cupboard, tv point, sofa and slipper chair, table and chairs, open access to:

Kitchenette 8'2" x 5'4" (2.51 x 1.64)

Fitted kitchen with matching wall and base units with work surface over, single drainer stainless steel sink unit, recess with electric cooker, part metro tiled walls, recess with fridge, double glazed window to rear aspect, wood effect laminate flooring, built in cupboard housing the hot water heater.

Bedroom 1 8'1" x 7'5" (2.47 x 2.27)

Plus built in wardrobe cupboard, double glazed window to front aspect, double bed and bedside units.

Inner Lobby

Doors leading off to:-

Bathroom

White suite comprising wood panel bath with electric shower fitting over, pedestal wash basin, low level wc, tiled walls and laminate flooring, frosted double glazed window to rear aspect.

Bedroom 2 7'11" x 7'6" (2.43 x 2.29)

Plus wardrobe cupboard, double glazed window to rear aspect, triple bunk bed and drawers.

Outside

Immediately in front of the chalet is an area of paved patio which faces a south/easterly direction.. The chalet sits in communal lawned grounds with parking adjacent.

Tenure

Leasehold -

Approx. 94 Years remaining

Site fees for 2022/2023 = £1530.53 p.a.

50% payable 1st May 50% payable 1st September

Open 1st March to 31st October

Dogs Allowed

Services

Mains water, electric and drainage.

Council Tax

Great Yarmouth Borough Council - Band 'A'

Location

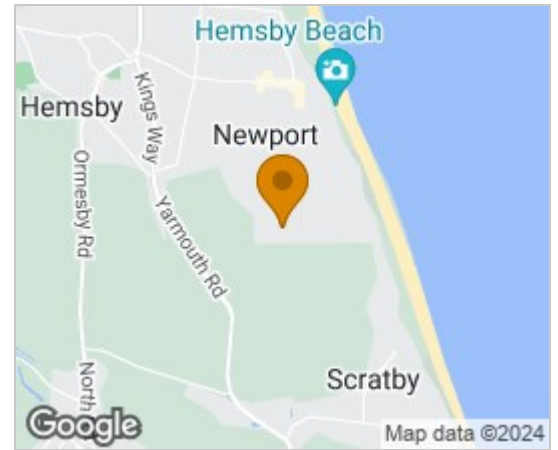
Hemsby is a coastal village approximately 7 miles north of Great Yarmouth. The tourist-based part of the village lies along Beach Road and is commonly known as Hemsby Beach. At the beach end of the road are a number of cafes, shops and amusement arcades, ten-pin bowling, bingo, a play area and many different machines. A variety of seaside-style cafes and restaurants are available, offering sit-down meals, take-away fish and chips and Chinese food. Fun fairs, crazy golf courses and children's rides also feature on a number of sites along the street.

Directions

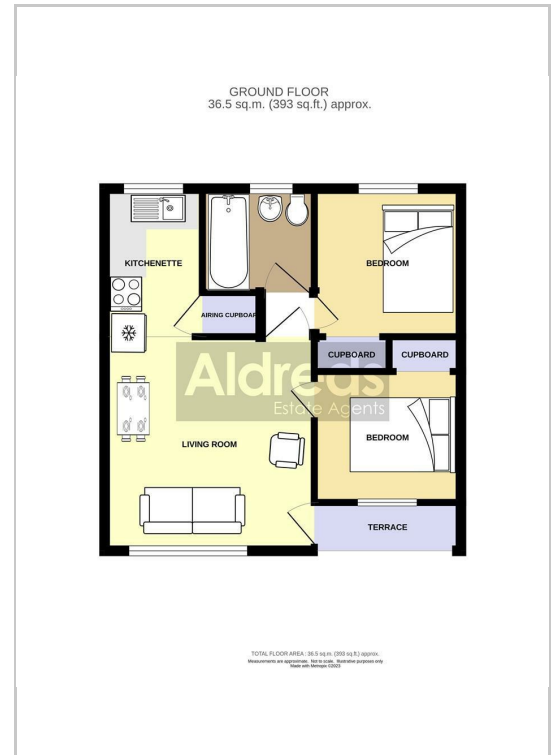
From the Yarmouth office head north along the A149 Caister Road, continue past the Yarmouth Stadium, at the roundabout turn left onto the Caister Bypass, continue over the next roundabout into Jack Chase Way, continue over the next roundabout into Scratby Road, continue into Yarmouth Road, turn right into Newport Road, continue towards the end of the road, turn right into Sundowner Holiday Park, continue along the access road passing the site office on the left hand side where the chalet can be found part way down on the left.

Ref: Y11846/08/23

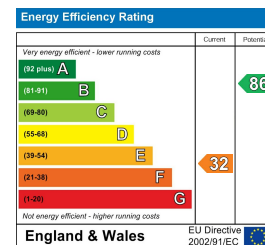
Area Map



Floor Plans



Energy Efficiency Graph



Disclaimer
These particulars are issued on an understanding that all negotiations shall be conducted through Messrs. Aldreds. Please note: Messrs. Aldreds for themselves and for the vendors or lessors of this property whose agents they are given notice that: 1. Particulars are set out as a general outline only for guidance of intending purchasers or lessees, and do not constitute nor constitute part of, an offer or contract. 2. All descriptions, dimensions, references to condition and necessary permissions for use and occupation, and other details are given without responsibility and any intending purchasers or tenants should not rely on them as statements or representations of fact but must satisfy themselves by inspection or otherwise as to the correctness of each of them. 3. No person in the employment of Messrs. Aldreds has any authority to make or give any representation or warranty whatever in relation to this property. 4. If you are proposing to visit the property and are traveling some distance please check with Aldreds on the issue of availability prior to traveling. 5. Aldreds Property Consultants and associated services may offer additional services to the prospective purchaser for which they will be entitled to receive a commission.

Aldreds are pleased to be working with Mortgage Advice Bureau. They're an award-winning mortgage broker with over 1,400 advisers across the UK, and have access to over 12,000 mortgage products from over 90 lenders. Aldreds Estate Agents Ltd receive a commission of £200 on each completed case. Your home may be repossessed if you do not keep up repayments on your mortgage. There may be a fee for mortgage advice. The actual amount you pay will depend upon your circumstances. The fee is up to 1%, but a typical fee is 0.3% of the amount borrowed. Mortgage Advice Bureau is a trading name of Mortgage Seeker Limited which is an appointed representative of Mortgage Advice Bureau Limited and Mortgage Advice Bureau (Derby) Limited which are authorised and regulated by the Financial Conduct Authority. Mortgage Seeker Limited Registered Office: Lovewell Blake, Sixty Six North Quay, Great Yarmouth, Norfolk, NR30 1HE. Registered in England Number: 372141.

17 Hall Quay, Great Yarmouth, Norfolk, NR30 1HJ
Tel: 01493 844891 Email: yarmouth@aldreds.co.uk <https://www.aldreds.co.uk/>

Registered in England Reg. No. 08945751 Registered Office: 66 North Quay, Great Yarmouth, Norfolk NR30 1HE Directors: Mark Duffield B.S.c. FRICS. Dan Crawley MNAEA Paul Lambert MNAEA