



55a Seadell Holiday Estate Beach Road

Hemsby, Great Yarmouth, NR29 4HY

Offers Over £35,000



Aldreds are pleased to offer this very well presented, superbly equipped, detached holiday chalet sitting in a quiet south facing location on the sought after Seadell Holiday Park in the popular coastal village of Hemsby. The chalet is located close to commercial amenities and within walking distance to the beach. The accommodation comprises open plan kitchen/living area, two double bedrooms and re-furnished shower room. Internally the presentation is of a very good standard and with the benefit of uPVC double glazed windows is an ideal low maintenance holiday property. The chalet is to be sold inclusive of furniture and equipment.



Open Plan Kitchen/Living Room 18'0" x 12'2" (5.49 x 3.71)

Fitted with modern wood grain kitchen units comprising wall and matching base units with light granite effect work surfaces over, stainless steel sink and drainer, slot in electric oven with four ring hob, freestanding under counter fridge freezer (appliances included), cupboard housing the electric meter and fuse box, tiled flooring and laminate flooring, double aspect double glazed windows to front and rear, wall mount tv point, uPVC entrance door, tv point, two armchairs and sofa, table and chairs, door to:-

Bedroom 1 8'11" x 8'11" (2.72 x 2.72)

Double bed, double glazed window to front aspect. fitted carpet, wardrobe and drawers.

Bedroom 2 8'11" x 8'11" (2.72 x 2.72)

Two single beds, double glazed window to rear aspect, fitted carpet, wardrobe unit.

Shower Room

Re-furbished with a white suite comprising double width shower cubicle with electric shower fitting, pedestal wash basin, low level wc, wood effect flooring, aqua panel walls, frosted double glazed window to rear aspect.

Outside

The chalet faces a southerly aspect and sits in well maintained lawned grounds with parking allowed next to the chalet.

Tenure

Leasehold. 37 years remaining on a 75 year lease from 1985

Ground Rent from 1st March 2022 to 28th February 2023 - £800 approximately

Services

Mains water, electric and drainage

Council Tax

Great Yarmouth Borough Council - Band 'A'

Location

Hemsby is a coastal village approximately 7 miles north of Great Yarmouth. The tourist-based part of the village lies along Beach Road and is commonly known as Hemsby Beach. At the beach end of the road are a number of cafes, shops and amusement arcades, ten-pin bowling, bingo, a play area and many different machines. A variety of seaside-style cafes and restaurants are available, offering sit-down meals, take-away fish and chips and Chinese food. Fun fairs, crazy golf courses and children's rides also feature on a number of sites along the street.

Directions

From the Yarmouth office head north along the A149 Caister Road, continue past the Yarmouth Stadium, at the roundabout turn left onto the Caister Bypass, continue over the next roundabout into Jack Chase Way, continue over the next roundabout into Scratby Road, continue into Yarmouth Road, continue over the mini roundabout into Kingsway, at the next mini roundabout turn right into Beach Road, turn right into Seadell Holiday Park, continue half way down the site and turn right where the chalet can be found towards the far end on the right.

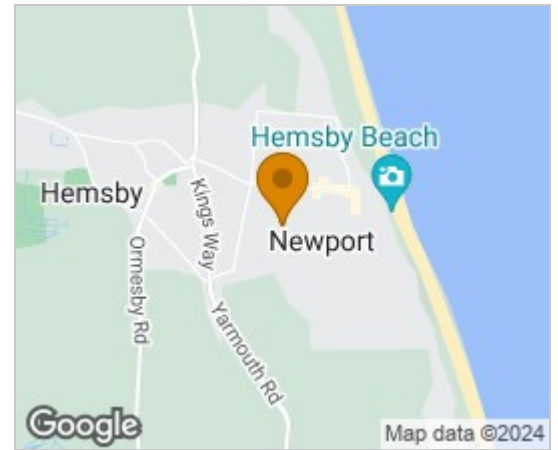
Ref: Y11759/06/23/CF

Disclaimer

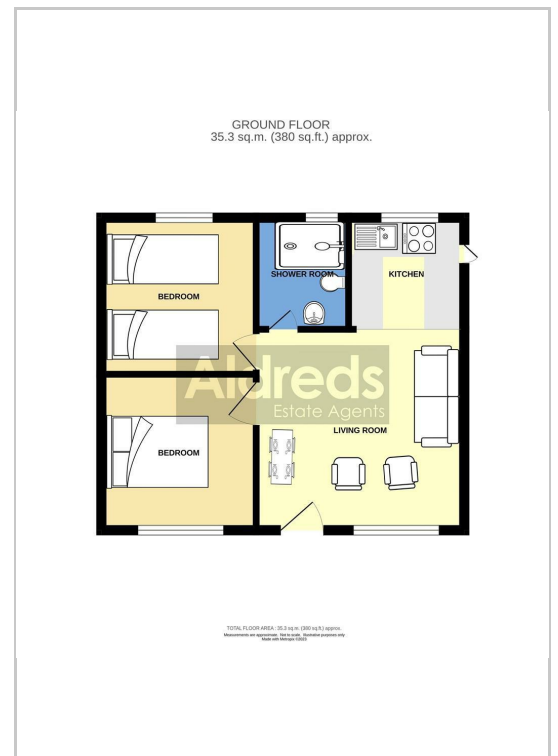
These particulars are issued on an understanding that all negotiations shall be conducted through Messrs. Aldreds. Please note: Messrs. Aldreds for themselves and for the vendors or lessors of this property whose agents they are given notice that: 1. Particulars are set out as a general outline only for guidance of intending purchasers or lessees, and do not constitute nor constitute part of, an offer or contract. 2. All descriptions, dimensions, references to condition and necessary permissions for use and occupation, and other details are given without responsibility and any intending purchasers or tenants should not rely on them as statements or representations of fact but must satisfy themselves by inspection or otherwise as to the correctness of each of them. 3. No person in the employment of Messrs. Aldreds has any authority to make or give any representation or warranty whatever in relation to this property. 4. If you are proposing to visit the property and are traveling some distance please check with Aldreds on the issue of availability prior to traveling. 5. Aldreds Property Consultants and associated services may offer additional services to the prospective purchaser for which they will be entitled to receive a commission.

Aldreds are pleased to be working with Mortgage Advice Bureau. They're an award-winning mortgage broker with over 1,400 advisers across the UK, and have access to over 12,000 mortgage products from over 90 lenders. Aldreds Estate Agents Ltd receive a commission of £200 on each completed case. Your home may be repossessed if you do not keep up repayments on your mortgage. There may be a fee for mortgage advice. The actual amount you pay will depend upon your circumstances. The fee is up to 1%, but a typical fee is 0.3% of the amount borrowed. Mortgage Advice Bureau is a trading name of Mortgage Seeker Limited which is an appointed representative of Mortgage Advice Bureau Limited and Mortgage Advice Bureau (Derby) Limited which are authorised and regulated by the Financial Conduct Authority. Mortgage Seeker Limited Registered Office: Lovewell Blake, Sixty Six North Quay, Great Yarmouth, Norfolk, NR30 1HE. Registered in England Number: 372141.

Area Map



Floor Plans



17 Hall Quay, Great Yarmouth, Norfolk, NR30 1HJ
Tel: 01493 844891 Email: yarmouth@aldreds.co.uk <https://www.aldreds.co.uk/>

Registered in England Reg. No. 08945751 Registered Office: 66 North Quay, Great Yarmouth, Norfolk NR30 1HE Directors: Mark Duffield B.S.c. FRICS. Dan Crawley MNAEA Paul Lambert MNAEA