



Ashleigh Close

Paulton, Bristol, BS39 7QD

£249,950

Launched by our new Midsomer Norton branch!
Located in the heart of Paulton and set at the end of a cul-de-sac this property would suit many types of buyers. If you are downsizing, upsizing or looking for a buy-to-let with a tidy return then look no further!

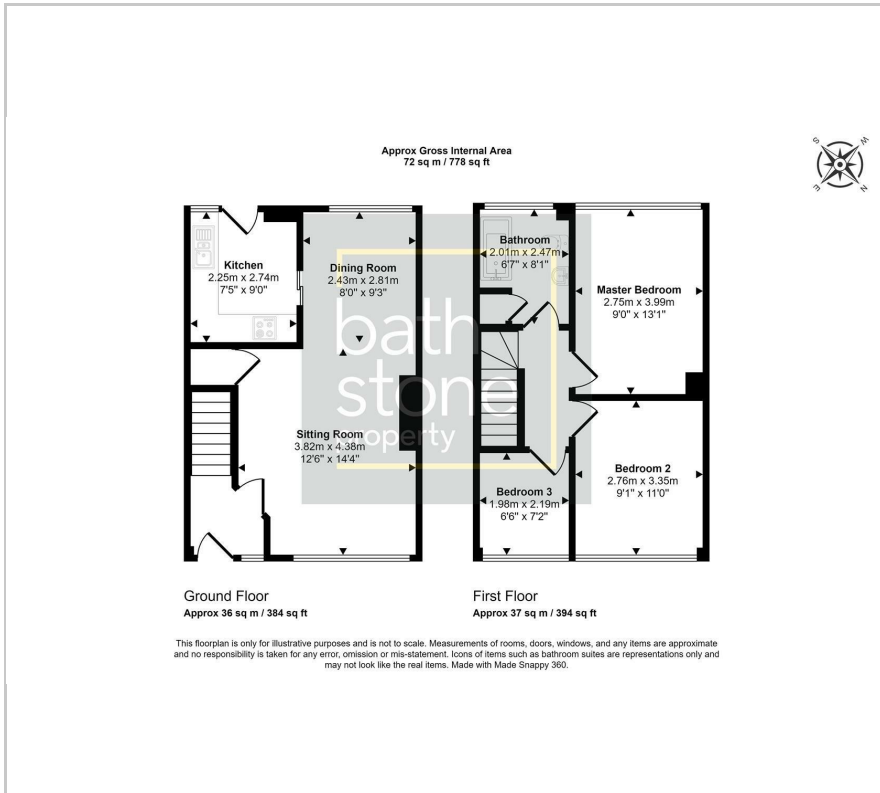
- No Onward Sales Chain!
 - Brand new kitchen
 - Cul-de-sac location
 - Close to amenities and bus routes
 - Blank canvass generous garden
 - Garage in block
- Call our Midsomer Norton branch today!

Viewing

Please contact our Midsomer Norton Office on 01761 360144 if you wish to arrange a viewing appointment for this property or require further information.



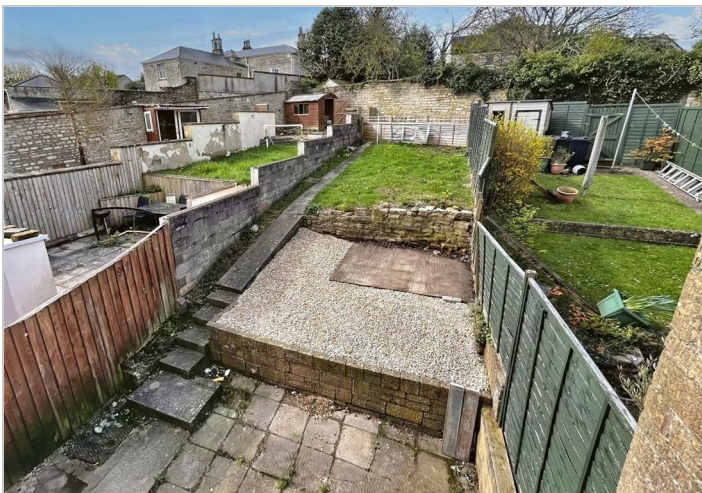
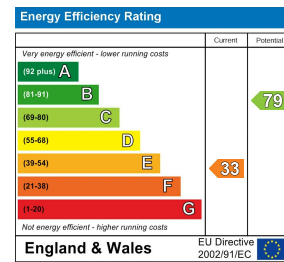
Floor Plan



Area Map



Energy Efficiency Graph



These particulars, whilst believed to be accurate are set out as a general outline only for guidance and do not constitute any part of an offer or contract. Intending purchasers should not rely on them as statements of representation of fact, but must satisfy themselves by inspection or otherwise as to their accuracy. No person in this firm's employment has the authority to make or give any representation or warranty in respect of the property.

1 Hayes Place, Bath, BA2 4QW

Tel: 01761 360144 Email: sales@bathstoneproperty.com <https://www.bathstoneproperty.com>