



11 Triangle East

, Bath, BA2 3HY

Offers In Excess Of £500,000

This three-bedroom house offers spacious living in the heart of Oldfield Park, with local shops, cafes, and amenities just around the corner on Moorland Road. Bath City Centre is a mile away, and green spaces nearby include Brickfields Park and the Two Tunnels Greenway.

- Terraced Family Home
- Three Bedrooms
- En-suite to Master
- Character
- Open Plan Reception Room with Log Fire
- Close to Local Amenities
- Four Storey Accommodation
- Tenants in Situ

Viewing

Please contact our Bath Stone Property Office on 01225422224 if you wish to arrange a viewing appointment for this property or require further information.



3



2

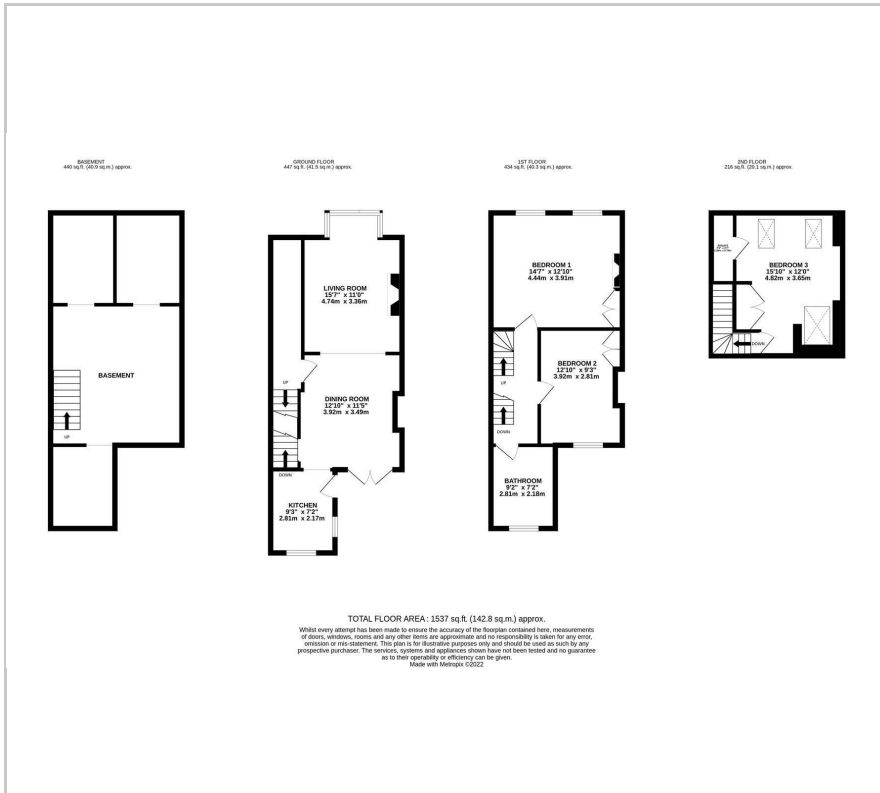


2



D

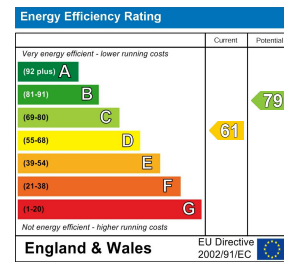
Floor Plan



Area Map



Energy Efficiency Graph



These particulars, whilst believed to be accurate are set out as a general outline only for guidance and do not constitute any part of an offer or contract. Intending purchasers should not rely on them as statements of representation of fact, but must satisfy themselves by inspection or otherwise as to their accuracy. No person in this firm's employment has the authority to make or give any representation or warranty in respect of the property.