



28 Marsden Road

, Bath, BA2 2LW

£3,900 PCM

Luxury modern 6 double bedroom, 3 bathroom student house with off-street parking in Odd Down, on university bus routes.

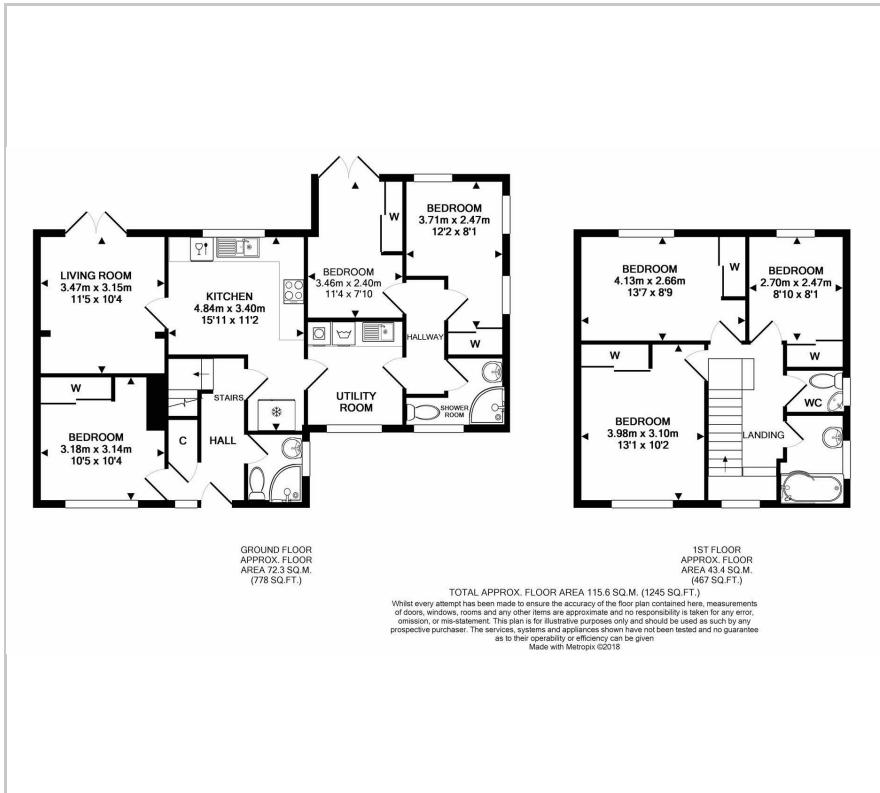
- 6 bedroom student property
- Double or small double beds
- 3 bathrooms
- Modern kitchen with washing machine, fridge/freezer, dishwasher & dryer
- Refurbished to a high standard
- Driveway parking
- Within 4.1 miles of University of Bath
- Within 3.5 miles of Bath Spa University

Viewing

Please contact our Bath Stone Property Office on 01225422224 if you wish to arrange a viewing appointment for this property or require further information.



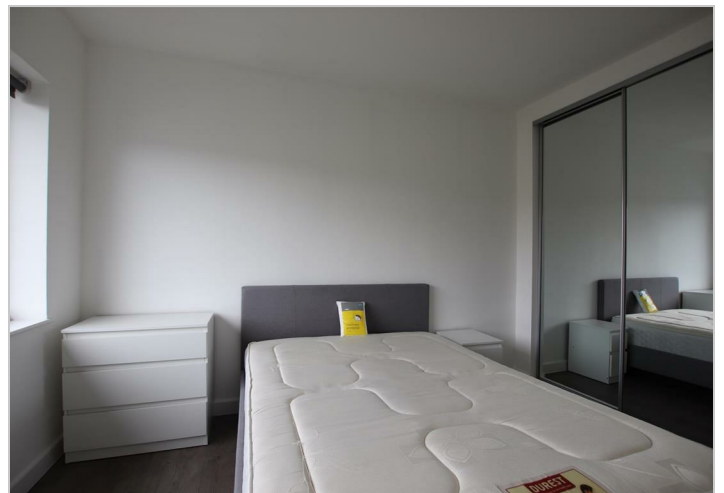
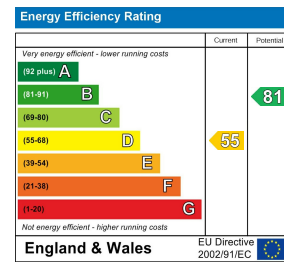
Floor Plan



Area Map



Energy Efficiency Graph



These particulars, whilst believed to be accurate are set out as a general outline only for guidance and do not constitute any part of an offer or contract. Intending purchasers should not rely on them as statements of representation of fact, but must satisfy themselves by inspection or otherwise as to their accuracy. No person in this firm's employment has the authority to make or give any representation or warranty in respect of the property.

1 Hayes Place, Bath, BANES, BA2 4QW

Tel: 01225422224 Email: sales@bathstoneproperty.com <https://www.bathstoneproperty.com>