



11 Hayes Place

Bear Flat, Bath, BA2 4QW

£3,750 PCM

Six double bedroom student house, in Bear Flat with local shops and cafes and easy access to Bath city centre.

- Six bedroom house
- Two shower rooms
- In Bear Flat with local shops and cafes, close to Bath city centre
- Low maintenance courtyard garden
- 2.5 miles to University of Bath
- Double glazing
- Gas central heating

Viewing

Please contact our Bath Stone Property Office on 01225422224 if you wish to arrange a viewing appointment for this property or require further information.



6



2

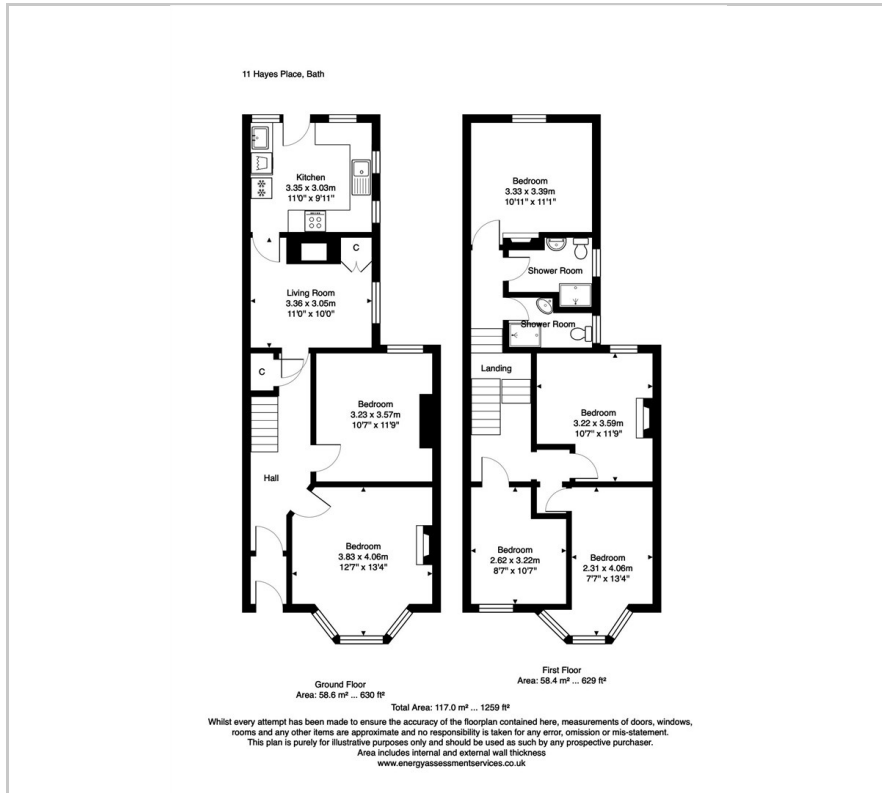


0



E

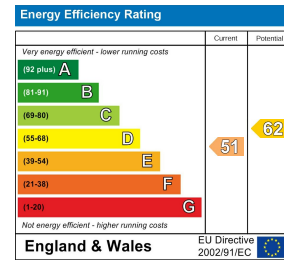
Floor Plan



Area Map



Energy Efficiency Graph



These particulars, whilst believed to be accurate are set out as a general outline only for guidance and do not constitute any part of an offer or contract. Intending purchasers should not rely on them as statements of representation of fact, but must satisfy themselves by inspection or otherwise as to their accuracy. No person in this firm's employment has the authority to make or give any representation or warranty in respect of the property.