



84 Roseworn Close

Bath, BA2 1PJ

£995 PCM

SPACIOUS mid terraced 3 BEDROOM house with NEW KITCHEN located in the residential area on the SOUTH SIDE of bath suitable for 2 sharers or family, available immediately.

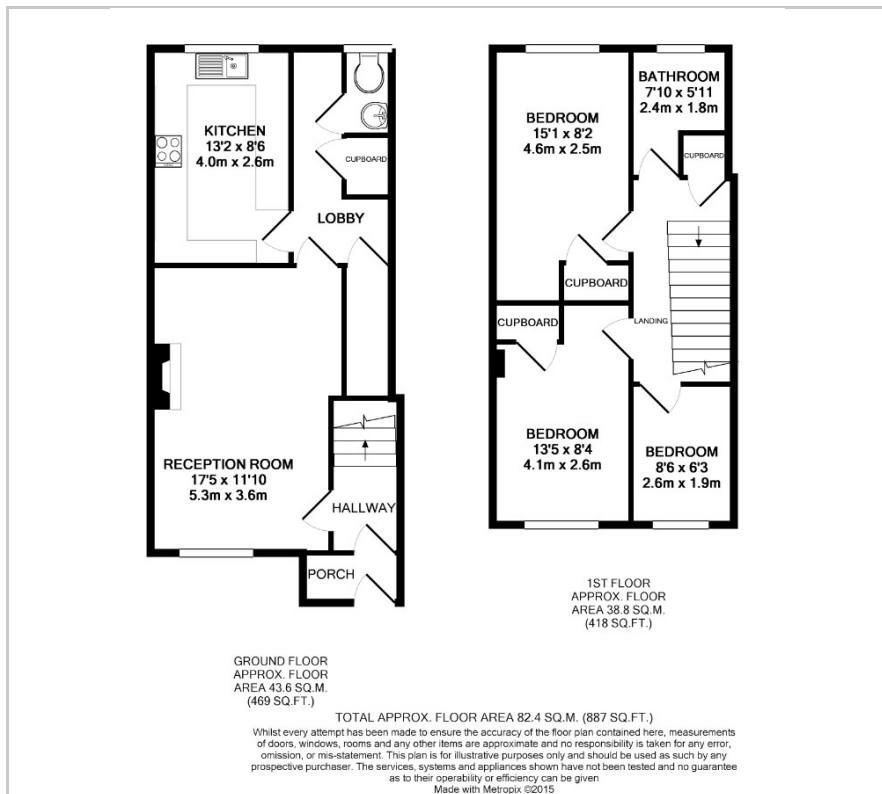
- Recently Fitted Kitchen
- Gas central heating
- 2 double bedrooms
- Downstairs WC
- Free on street parking
- Private garden
- Local amenities nearby
- Excellent transport links

Viewing

Please contact our Bath Stone Property Office on 01225422224 if you wish to arrange a viewing appointment for this property or require further information.



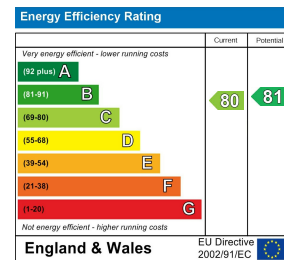
Floor Plan



Area Map



Energy Efficiency Graph



These particulars, whilst believed to be accurate are set out as a general outline only for guidance and do not constitute any part of an offer or contract. Intending purchasers should not rely on them as statements of representation of fact, but must satisfy themselves by inspection or otherwise as to their accuracy. No person in this firm's employment has the authority to make or give any representation or warranty in respect of the property.