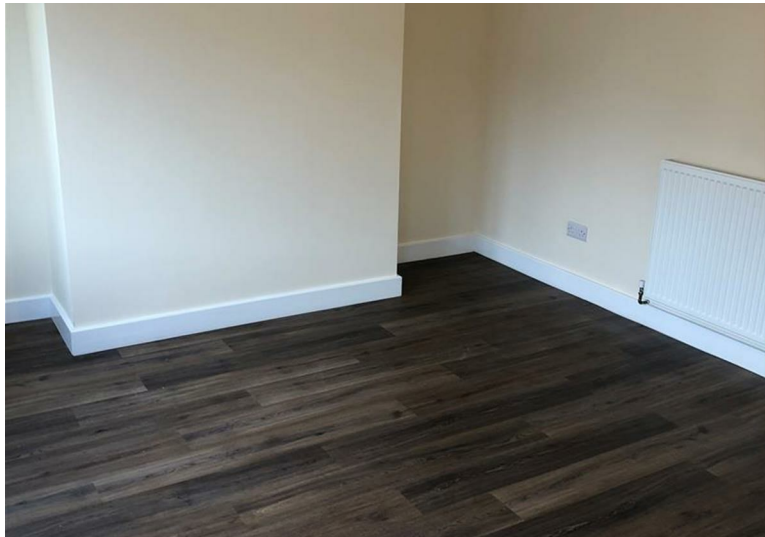




8A Roman Road
Leeming, Bedale, Northallerton, DL7 9RZ
£600 Per month



NEWLY REFURBISHED ONE BEDROOM COTTAGE WITH REAR GARDEN AND PARKING
SITTING ROOM, KITCHEN, DOUBLE BEDROOM AND MODERN FITTED BATHROOM
LOCATED IN THE VILLAGE OF LEEMING WITH EXCELLENT ROAD LINKS
BEDALE CLOSE BY OFFERING LOCAL SHOPS SCHOOLS AND AMENITIES
AVAILABLE NOW EPC C COUNCIL TAX BAND B



Summary

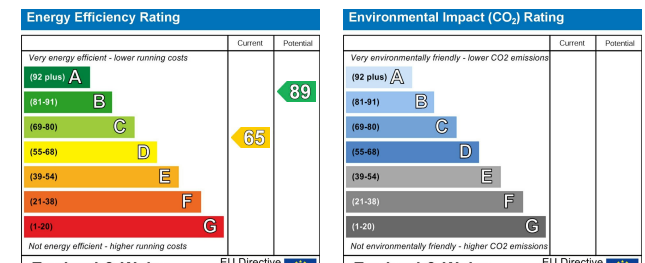
A newly refurbished one-bedroom cottage, with a rear garden and parking. Located in Leeming village with excellent road links, and close by amenities.

Front door opens into the generous sitting room with windows to the front and side. An archway leads to the kitchen with base units finished in cream with complementing worksurfaces. The appliances comprise of a built-in electric oven and ceramic hob with chrome extractor above. There is space and plumbing for a washing machine and fridge freezer, a large window and external door to the rear complete this space.

Stairs to the first-floor lead from the kitchen, the landing has a window to the rear and doors to both rooms. The bedroom has a window to the front and full height triple fitted wardrobes, a second built in cupboard houses the gas boiler. The house bathroom offers a three-piece suite in white with a shower over the bath, and a window to the rear.







Craven-Holmes Estate Agents. 32 High Street, Boroughbridge, York, North Yorkshire, YO51 9AW

t: 01423 329010 e: lettings@craven-holmes.co.uk | sales@craven-holmes.co.uk

www.craven-holmes.co.uk