



FOR SALE



10 Queens Drive, Peel, Isle Of Man, IM5 1BH

£359,000

2 Patrick Street, Peel, Isle of Man, IM5 1AZ

Tel: 01624 678876

Email: [hello@graysestateagents.com](mailto:hello@graysestateagents.com)

[www.graysestateagents.com](http://www.graysestateagents.com)



GRAYS  
ESTATEAGENTS.COM

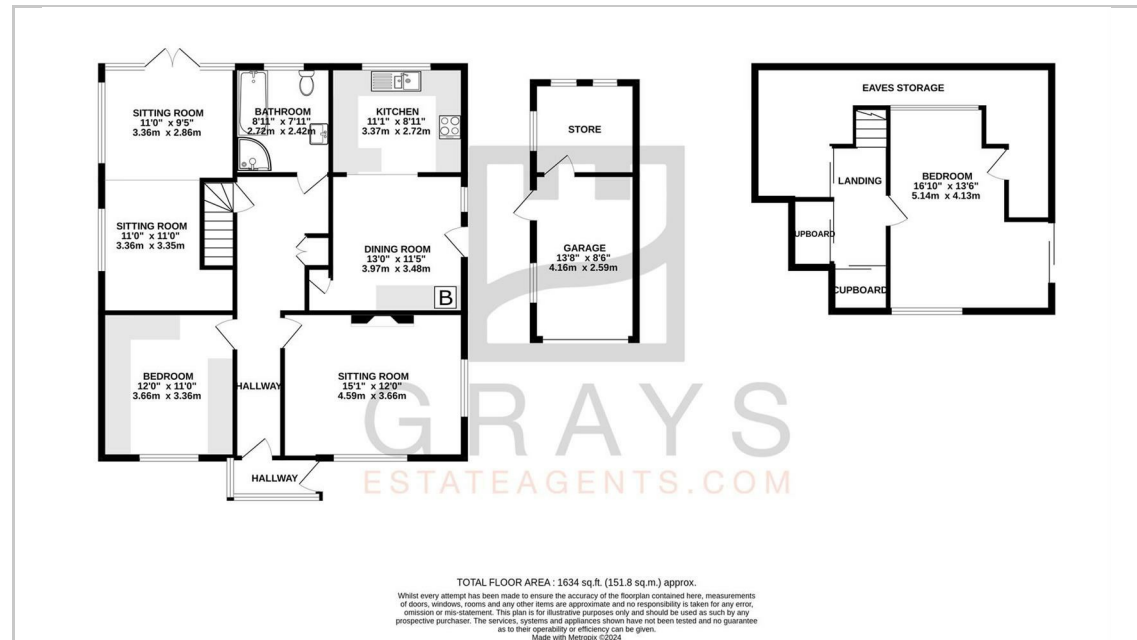


## THE PROPERTY

Situated in a sought after location in the centre of Peel, this detached dormer bungalow provides superb family accommodation over 2 floors. On the ground floor there is a spacious sitting room, open plan kitchen/diner, bedroom with built in wardrobes, bathroom and a versatile room which could be used as a sitting room / study or bedroom. Upstairs there is an additional bedroom with superb views over Peel and a good amount of eaves storage.

Outside there is a off road parking at the front of the house adjacent the single garage and low maintenance garden. The rear garden is paved with a raised deck providing lovely views towards Peel hill and Castle. The property is conveniently located being a 5 minute walk to the harbour side, beach and town centre.

- Sought-after setting in the heart of Peel, blending quiet living with city convenience.
- Spacious living spaces
- Ground floor room adaptable as a study, bedroom, or extra living space.
- Upstairs bedroom offers scenic views over Peel.
- Easy-care front and rear gardens, with off-road parking and scenic deck.
- Two-story accommodation designed for family comfort.
- Modern, open plan area for dining and entertaining
- Built-in wardrobes in the bedroom for optimal organisation.
- Clutter free living with ample storage space under the eaves
- A short 5-minute walk to the harbour, beach, and town centre.



GRAYS  
ESTATEAGENTS.COM