



Flat 6 12 Belmont Terrace, Douglas, Isle Of Man, IM1 4NG

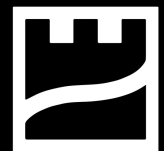
£89,000

2 Patrick Street, Peel, Isle of Man, IM5 1AZ

Tel: 01624 678876

Email: [hello@graysestateagents.com](mailto:hello@graysestateagents.com)

[www.graysestateagents.com](http://www.graysestateagents.com)



GRAYS  
ESTATEAGENTS.COM

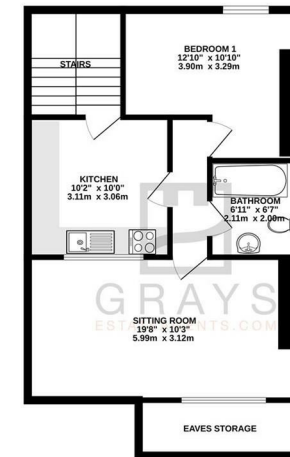


## THE PROPERTY

Fantastic views from this top floor 1 bed flat, located in the heart of Douglas, providing easy access to all local amenities. The flat is ideal for a first time buyer or an investor and is being sold with no onward chain. The light and airy accommodation provides a spacious living/dining room with large windows enjoying views over Douglas Head, kitchen, double bedroom and bathroom with modern fittings.



- 1 Bed flat in the heart of Douglas
- Conveniently located near all local amenities, including shops, restaurants, businesses
- Kitchen with ample storage and integrated appliances
- Living room enjoys fabulous views over Douglas Head
- Comfortable double bedroom
- Tiled modern bathroom
- Ideal for first time buyer or an investor



TOTAL FLOOR AREA: 556 sq ft (51.4 sq m) approx.  
While every effort has been made to ensure the accuracy of the floorplan contained here, measurements of floors, walls, doors and windows have been approximate and not necessarily taken to the exact perimeter or to the center. They are for illustrative purposes only and should not be used for any legal purposes or for any other purpose. The floorplan is provided for general information only and is not intended to be used for any other purpose.  
Made with Merge 10/21