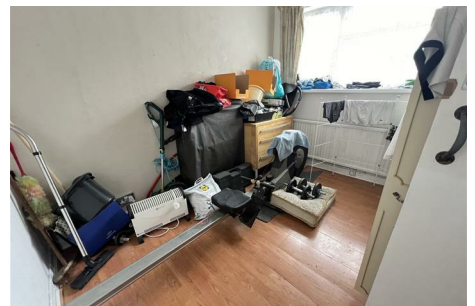


Grove Lane, Handsworth, B20 2EX

Guide Price £275,000



- EXTENDED SEMI DETACHED HOUSE
- FITTED KITCHEN / DINER
- OFF ROAD PARKING TO FRONT
- NO UPWARD CHAIN
- FOUR BEDROOMS
- X2 DOWNSTAIRS SHOWER ROOMS
- SPACIOUS REAR GARDEN
- FOUR RECEPTION ROOMS
- FIRST FLOOR BATHROOM
- PRIME LOCATION

Contact us for more details:
Tel: 0121 358 6222 Email: greatbarr@acres.co.uk

Full listings online at www.acres.co.uk