



The Old Silk Mill | Maythorne | Southwell | NG25 0RS

Offers Over £189,950



Jonathan Fitzpatrick
VILLAGE & COUNTRY HOMES

The Old Silk Mill | Maythorne Southwell | NG25 0RS Offers Over £189,950

A spacious 2 double bedroom second floor apartment forming part of this historic Grade 2 listing converted mill and set within a delightful and picturesque grounds bordering fields and open countryside. The apartment is offered for sale in immaculate order throughout and benefits from a long lease (approx. 960 years) entryphone access, attractive dining kitchen, re-fitted shower room, large lounge, private parking and use of the delightful communal gardens. Maythorne is a quiet and secluded hamlet close to the Southwell Trail, Norwood Park golf course and a few minutes drive to the famous market town of Southwell. Viewing highly recommended.

- Spacious and extremely well presented 2 double bedroom second floor apartment in grade 2 listed converted mill.
- Modern dining kitchen and large lounge
- Allocated and guest parking
- Easy and convenient access to Southwell
- Superb views across gardens, fields and open countryside
- Newly fitted shower room
- Long lease - approx. 960 years unexpired
- Short walking distance to the Southwell Trail

Hallway:
19'10" x 8'5" (6.06 x 2.57)

Kitchen / Dining Room:
15'7" x 8'7" (4.76 x 2.63)

Lounge:
15'7" x 13'7" (4.75 x 4.16)

Bedroom 1:
13'8" x 12'4" (4.17 x 3.76)

Bedroom 2:
12'1" x 11'10" (3.69 x 3.63)

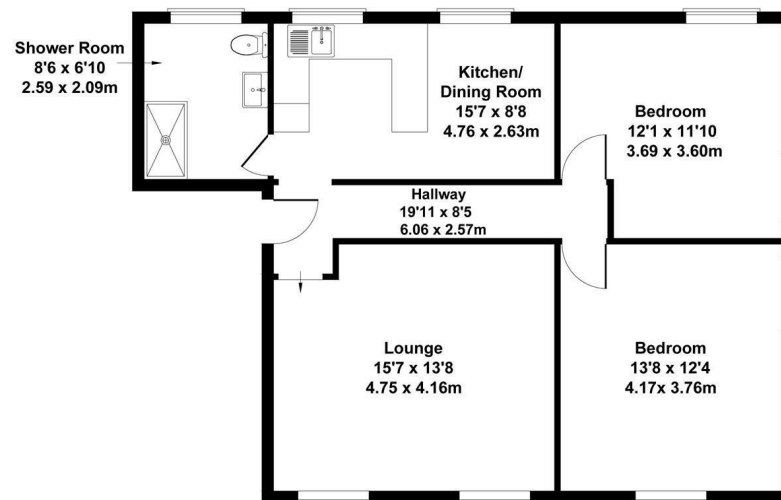
Shower Room:

8'5" x 6'10" (2.59 x 2.09)



Flat 16 The Old Silk Mill, Maythorne, NG25 0RS

Approximate Gross Internal Area
787 sq ft - 74 sq m



Not to Scale. Produced by The Plan Portal 2024
For Illustrative Purposes Only.

Energy Efficiency Rating		Current	Potential
Very energy efficient - lower running costs			
(92 plus)	A		
(81-91)	B		82
(69-80)	C		
(55-68)	D	51	
(39-54)	E		
(21-38)	F		
(1-20)	G		
Not energy efficient - higher running costs			
England & Wales		EU Directive 2002/91/EC	

64 Main Street
Farnsfield
Nottinghamshire
NG22 8EF
01623 392676
mail@jfea.co.uk
www.jfea.co.uk