



Jonathan Fitzpatrick  
VILLAGE & COUNTRY HOMES

Tel 01623 392676  
Email [mail@jfea.co.uk](mailto:mail@jfea.co.uk)  
Visit [jfea.co.uk](http://jfea.co.uk)

64 Main Street Farnsfield NG22 8EF

Thinking of moving? **Think JF.**



**26 St. Michaels View Farnsfield NG22 8WP**

**A** beautifully presented 4 bedroom detached family home situated on this popular and sought after development off Cockett Lane. Numerous features include spacious lounge with bay window, downstairs cloakroom/wc, superb dining kitchen with built in appliances, en suite shower room to master bedroom plus fitted wardrobes, garage and off road parking. The rear garden is attractively landscaped with patio and decking area plus additional secure storage to the side of the property.

Farnsfield village shops and amenities including St Michaels primary school, the Southwell Trail nature reserve and beautiful countryside walks all within convenient walking distance away.

***Early viewing strongly advised.***

All main services /gas central heating /double glazing /Council Tax Band D

***£359,950 Freehold***

Viewing strictly by appointment through Jonathan Fitzpatrick Village & Country Homes.

Tel: **01623 392676** / email [mail@jfea.co.uk](mailto:mail@jfea.co.uk)







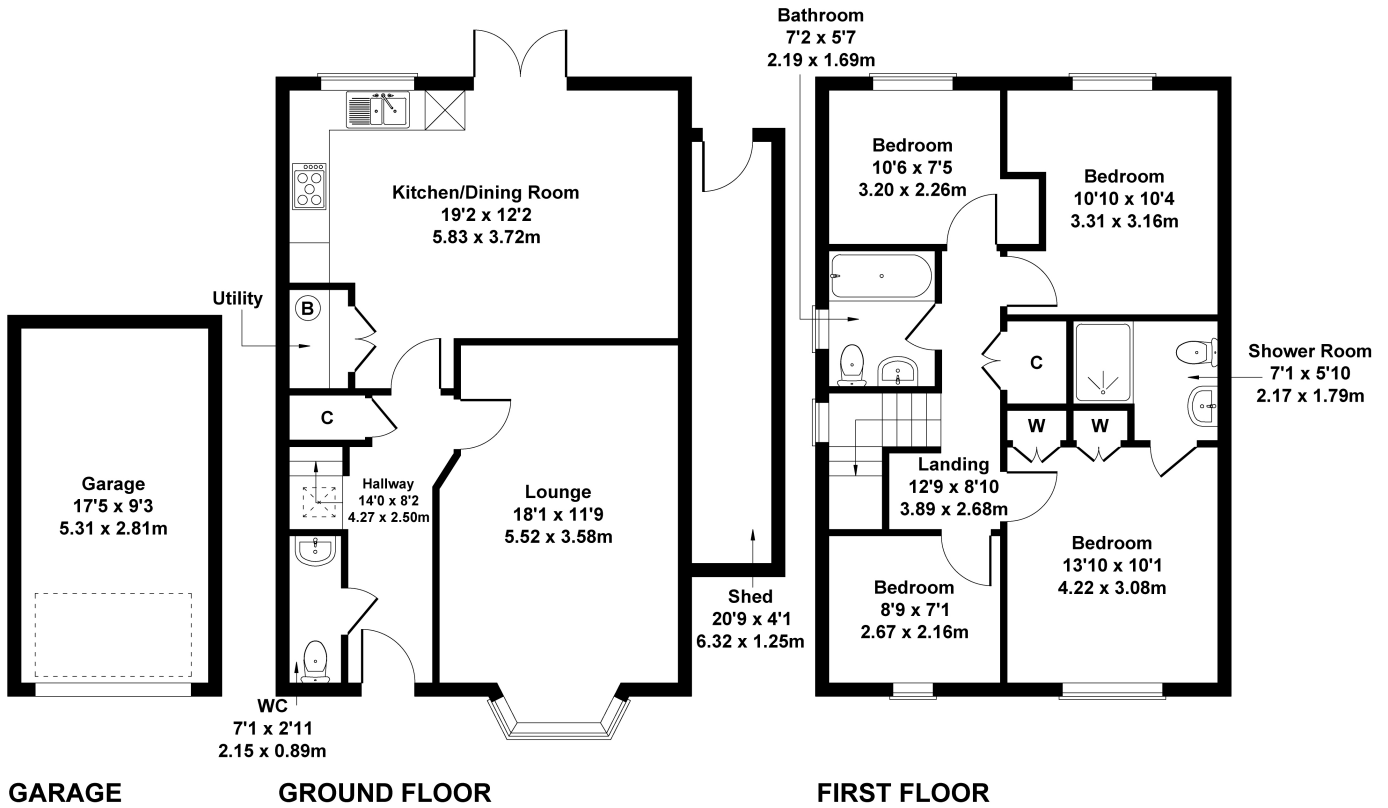






# 26 St Michaels View NG22 8WP

Approximate Gross Internal Area  
1378 sq ft - 128 sq m



Not to Scale. Produced by The Plan Portal 2023  
For Illustrative Purposes Only.

## Energy performance certificate (EPC)

26, St. Michaels View Farnsfield NEWARK NG22 8WP	Energy rating <b>B</b>	Valid until: 20 March 2027
		Certificate number: 0050-3809-7275-9723-1595