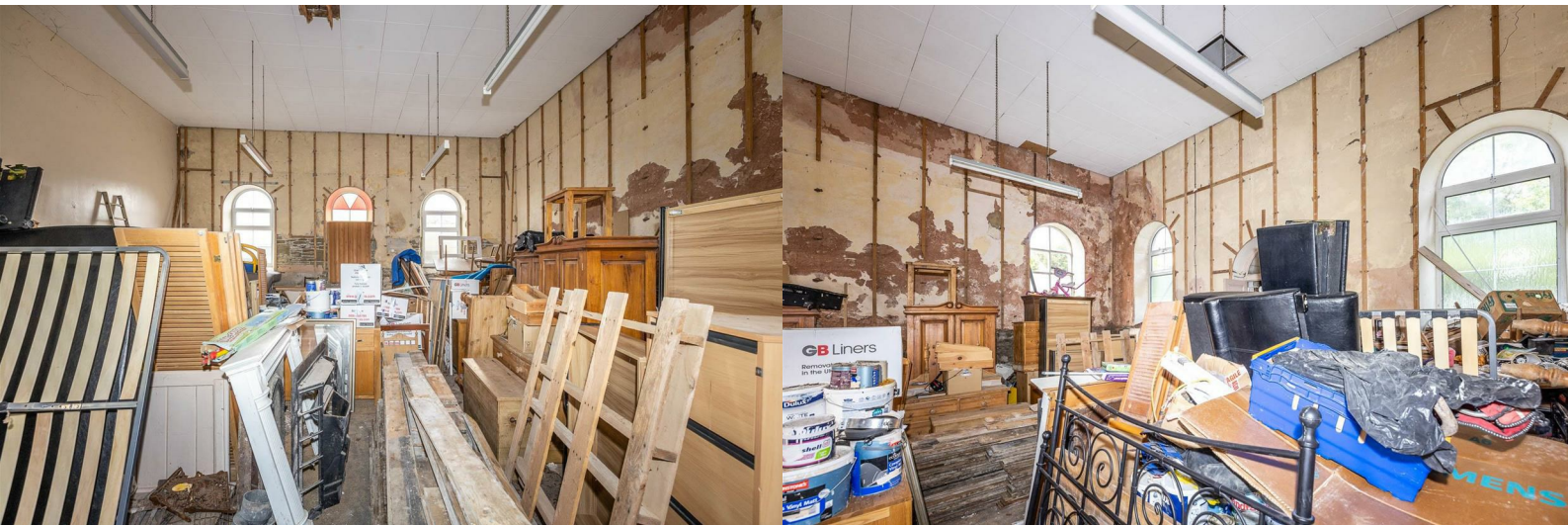




Worrall Hill Chapel

Worrall Hill, Lydbrook, GL17 9QD

£150,000

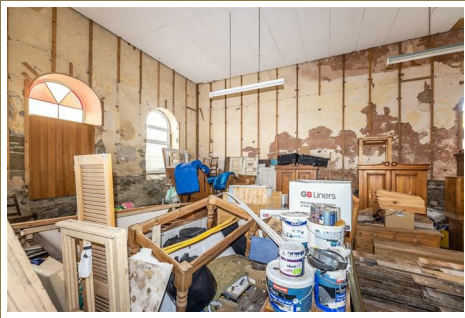


Planning consent:

Planning ref: P2469/11/FUL

The Chapel has previously been granted full planning permission for a change of use to a holiday let and all of the associated alterations. This has since lapsed in 2015 but you can view the full planning application and associated documents using the planning reference above on the following;

The Chapel is situated in the small hamlet of Worrall Hill, closely guarded by the village of Lydbrook which boasts many amenities. The market town of Coleford is only 4 miles away with the larger market town of Ross-On-Wye being only 8 miles. The Chapel has woodland walks on it's doorstep with easy access to the The Royal Forest Of Dean.



Porch:

3'10" x 3'2" (1.17m x 0.99m)

Hall:

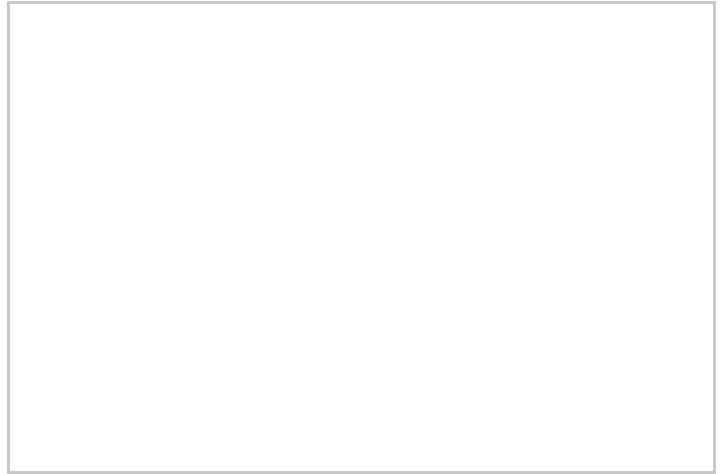
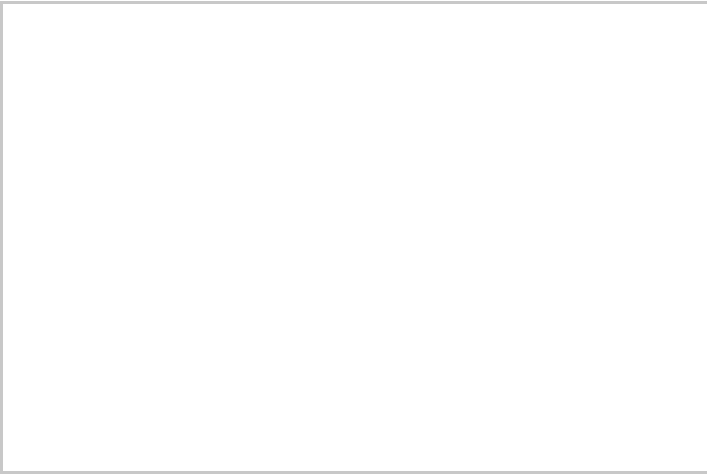
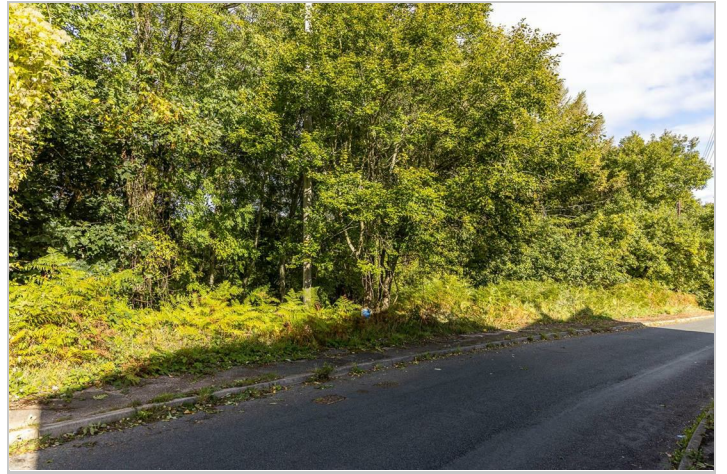
30'4" x 27'0" (9.27m x 8.23m)

16 ft high to suspended ceiling.

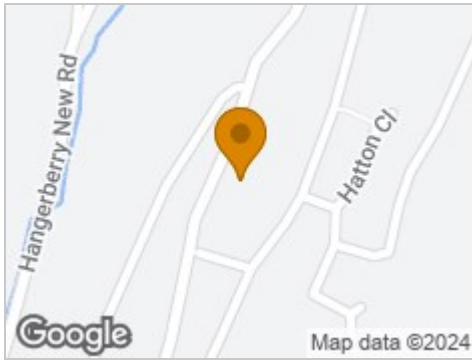
Basement:

29'11" x 12'0" (9.14m x 3.66m)

Approximate sizes only.



Road Map



Hybrid Map



Terrain Map



Floor Plan



Viewing

Please contact our Lydney Office on 01594 368202 if you wish to arrange a viewing appointment for this property or require further information.

Energy Efficiency Graph



These particulars, whilst believed to be accurate are set out as a general outline only for guidance and do not constitute any part of an offer or contract. Intending purchasers should not rely on them as statements of representation of fact, but must satisfy themselves by inspection or otherwise as to their accuracy. No person in this firm's employment has the authority to make or give any representation or warranty in respect of the property.