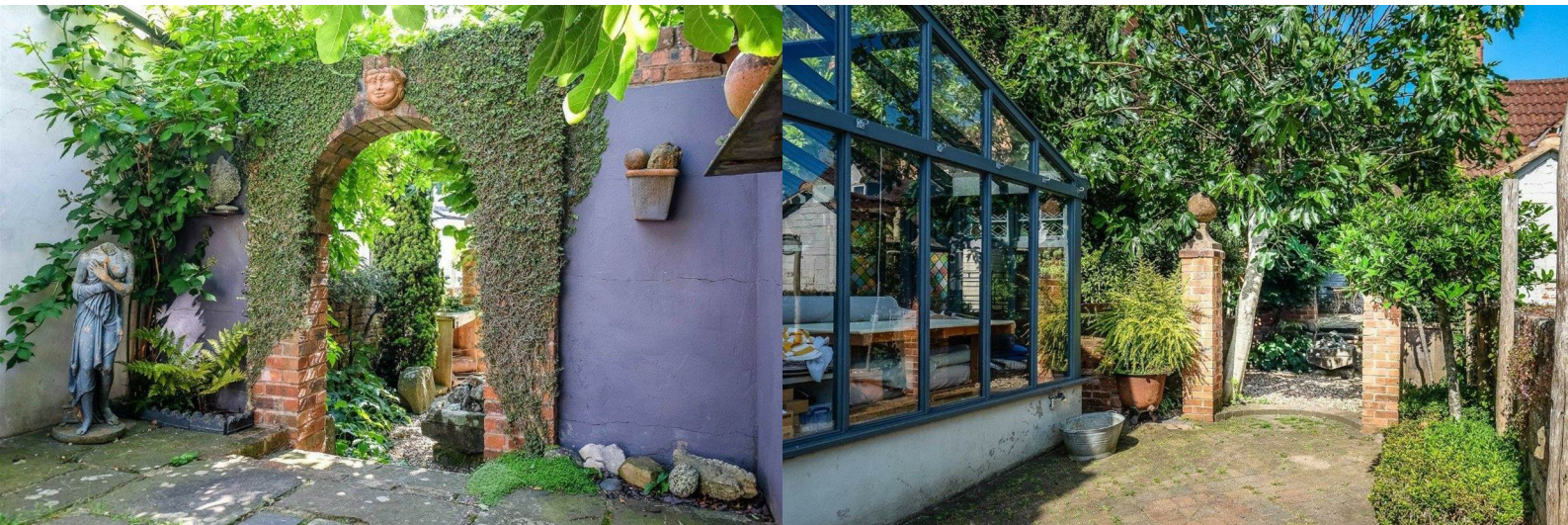




Townling House, High Street

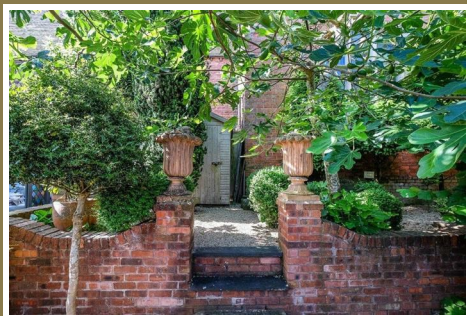
Newnham-On-Severn, Gloucestershire, GL14 1BU

£440,000



Characterful and Quirky Victorian Three Bedroom Detached Property in the much Sought After Village of Newnham-on-Severn. Having Three Reception Rooms, Kitchen, Three Bedrooms, Separate WC, Bathroom, Stairs to Loft room, Off Road Parking, Beautiful Victorian Style Garden, The Property is Set Back from the Main High Street.

The Village of Newnham-on-Severn has its own Convenience Store, Post Office, Doctors Surgery, Social Club, Public House, Primary School, Beauty Salon, Church, Village Hall. Lovely country walks on your doorstep. Newnham is on main bus routes. Nearest train stations are in Lydney & Gloucester. School bus services offer access to all senior schools and colleges. This property is located conveniently to the main A48; within easy commuting distance of Gloucester, Cheltenham the M5 & M4, also, Bristol, Newport & Cardiff etc.



Entrance Hallway:

Beautiful part glazed stained glass entrance door, original ornate tiled floor, under-stairs cupboard, ceiling mounted smoke alarm, power points, radiator, doors to lounge, kitchen and stairs to first floor.

Lounge:

14'6" x 10'11" (4.42m x 3.35m)

From the entrance hall - a small step down into the lounge. This is a cosy room having an original fireplace with open fire, storage and shelving in both of the recesses, large box bay window to the front having stained glass across the top of the main windows, radiator, power points, ceiling light, small inset ornate feature glass window between the lounge and hall.

Kitchen:

14'2" x 9'3" (4.32m x 2.82m)

Tiled floor, Belfast sink, slate work surface, space for larder fridge/freezer, shelving in recess, window to side, free standing drawer units with wooden work surface, integrated electric oven, four burner gas hob, radiator, power points, ceiling lighting, feature stained glass window, door to utility cupboard. Utility cupboard having plumbing for automatic washing machine, storage and door accessing the side of the property. Small step down into dining room.

Dining Room:

13'1" x 12'2" (4.01m x 3.73m)

A lovely light and airy room having a window to side, double doors leading through to the conservatory, feature gas fire, stone hearth, slate mantle, radiator, power points, ceiling light.

Conservatory:

13'10" x 13'1" (4.24m x 4.01m)

This room is a lovely addition to the property (it is currently being used as the owners work room). Parquet flooring, glazed roof, windows and doors, stained glass top openers, three quarter stained glass double door leading to rear garden. There are power points, radiator and lighting.

First Floor Landing:

Cloakroom:

Window to rear, WC, radiator, ceiling light.

Bathroom:

6'0" x 5'4" (1.83m x 1.63m)

Original wooden floorboards, chrome ladder radiator, ceiling light, bath with rain shower over and hand held shower attachment, circular wash basin and wash stand, tiled splash-backs, box bay window to front having stained glass top windows.

Bedroom One:

13'8" x 12'7" (4.17m x 3.86m)

Having exposed wooden floorboards, window to side, power points, ceiling light, radiator, loft access.

Bedroom Two:

9'6" x 9'1" (2.9m x 2.77m)

Fitted carpet, box bay window to front having stained glass top opening windows, original cast iron fireplace with wood surround and tiled inset, radiator, ceiling light, power points, door to loft room.

Bedroom Three:

10'0" x 9'1" (3.07m x 2.79m)

Exposed wooded floorboards, window to side, power points, radiator, ceiling light, loft access.

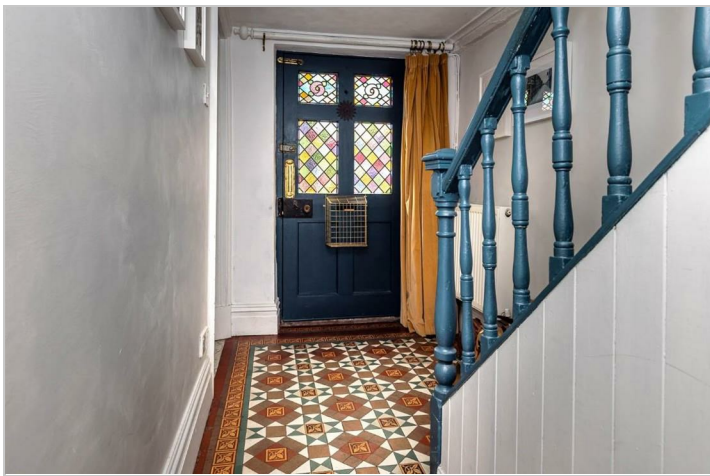
Loft Room:

11'10" x 11'6" (3.61m x 3.51m)

Window to side, original ceiling beams, power points ceiling light.

Outside:

To the side of the property is parking, there are double gates leading to additional parking and having access to the rear garden. The rear garden has been tastefully designed which is very much in-keeping with the Victorian Style of this lovely home.



Consumer Notes: Dean Estate Agents Ltd have prepared the information within this website/brochure with care and co-operation from the seller. It is intended to be indicative rather than definitive, without a guarantee of accuracy. Before you act upon any information provided, we request that you satisfy yourself about the completeness, accuracy, reliability, suitability or availability with respect to the website or the information, products, services, or related graphics contained on the website for any purpose.

These details do not constitute any part of any Offer, Contract or Tenancy Agreement.

Photographs used for advertising purposes may not necessarily be the most recent photographs, although every effort is made to update photographs at the earliest opportunity. Any reliance you place on such information is therefore strictly at your own risk. All photographic images are under the ownership of Dean Estate Agents Ltd and therefore Dean Estate Agents retain the copyright. You must obtain permission from the owner of the images to reproduce them.

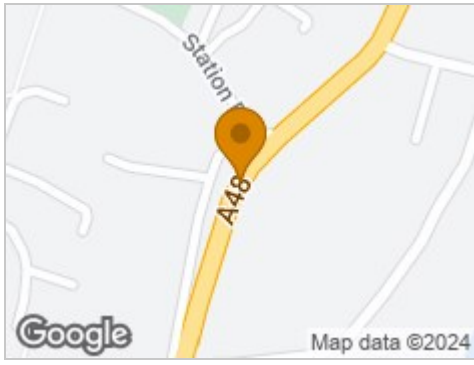
Tenanted Properties – we are not always able to show the most recent condition of a property due to tenants' privacy and we may choose to show the photographs of the property when it was last vacant to at least allow clients some idea of the internal condition. Therefore, we would of course, urge you to view before making any decisions to purchase or rent the property and before any costs.

Energy Performance Certificates are supplied to us via a third party and we do not accept responsibility for the content within such reports.

PRC Certificates – Some ex-local authority properties have been repaired in recent years using the PRC Scheme wherein a certificate has been produced by a qualified property engineer. This certificate does not imply the suitability for a mortgage approval and you must satisfy yourself of the work carried out that may meet your lenders criteria.

As with leasehold property or new build development sites, you are likely to be responsible for a contribution to management charges and/or ground rent or a contribution to the development

Road Map



Hybrid Map



Terrain Map



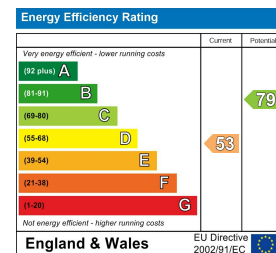
Floor Plan



Viewing

Please contact our Lydney Office on 01594 368202 if you wish to arrange a viewing appointment for this property or require further information.

Energy Efficiency Graph



These particulars, whilst believed to be accurate are set out as a general outline only for guidance and do not constitute any part of an offer or contract. Intending purchasers should not rely on them as statements of representation of fact, but must satisfy themselves by inspection or otherwise as to their accuracy. No person in this firm's employment has the authority to make or give any representation or warranty in respect of the property.