



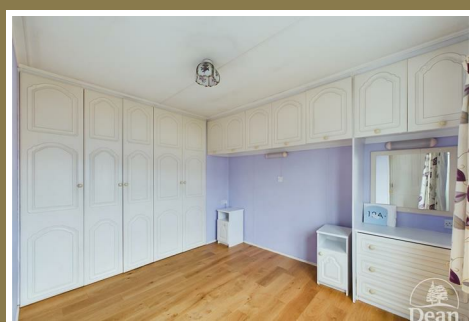
Glenmore Road Cinderford, GL14 2JA

£98,000



*** VIRTUAL TOUR AVAILABLE ***

Dean Estate Agents are thrilled to advertise 'For Sale' this two bedroom park home situated on the popular Forest View site on Valley Road. The park home comfortably sits on a corner plot with low maintenance Cotswold stone area's with a number of mature shrubs. The hallway, master bedroom and sitting room has engineered oak flooring, there is a fitted kitchen with space for table and chairs and a shower room with large shower cubicle. The property is offered for sale with NO ONWARD CHAIN



Entrance Hallway :

UPVC door and double glazed window to front aspect, engineered oak flooring, radiator.

Kitchen :

Matching wall and base cabinets, 1.5 bowl sink unit, plumbing for washing machine, gas hob, electric oven & grill, extractor hood, space for table and chairs, double glazed windows to front and rear aspects, radiator, airing cupboard with water tank, vinyl flooring.

Sitting Room :

Double glazed window to side aspect, double glazed French doors to front aspect, engineered oak flooring, gas fire with back boiler, wall lighting, radiator.

Bedroom 1 :

Fitted wardrobe and cupboards, double glazed window to front aspect, engineered oak flooring, radiator.

Bedroom 2 :

Fitted wardrobe, double glazed window to rear aspect, radiator, vinyl flooring.

Shower Room :

Twin shower cubicle, wash hand basin, low level WC, double glazed window to rear aspect, radiator, vinyl flooring.

Outside :

The property is set on a corner plot, there are several Cotswold stone areas with a variety of shrubs, two sheds, greenhouse, outside water tap.

Consumer Notes :

Dean Estate Agents Ltd have prepared the information within this website/brochure with infinite care and without a guarantee of accuracy. Before you act upon any information provided, we request that you satisfy yourself about the completeness, accuracy, reliability, suitability, or availability with respect to the website or the information, products, services, or related graphics contained on our website for any purpose.

These details do not constitute any part of any Offer, Contract or Tenancy Agreement. Photographs used for advertising purposes may not necessarily be the most recent photographs. All photographic images are under the ownership of Dean Estate Agents Ltd and therefore Dean Estate Agents retain the copyright.

Tenanted Property – we are not always able to show the most recent condition of a property due to tenants' privacy and may choose to show the photographs of the property when it was last vacant to at least allow clients some idea of the internal condition at that time.

Energy Performance Certificates are supplied to us via a third party and we do not accept responsibility for the content within such reports.

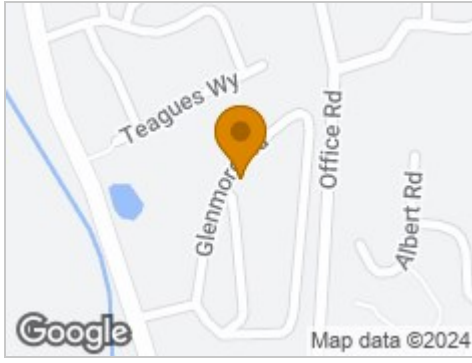
As with leasehold property or new build development sites, you are likely to be responsible for a contribution to management charges and/or ground rent or a contribution to the development service charge. Please enquire at the time of viewing. You may also incur fees for items such as leasehold packs and, in addition, you will also need to check the remaining length of any lease before you complete a mortgage application form. You must therefore consult with your legal representatives on these matters at the earliest opportunity before making a decision to purchase or incurring costs.

Measurements: Great care is taken when measuring, but measurements should not be relied upon for

ordering carpets, equipment etc. The Laws of copyright protect this material. Dean Estate Agents is the owner of the copyright. This property sheet forms part of our database and is protected by the database right and copyright laws. Equipment: Dean Estate Agents have not tested the equipment or any central heating system mentioned in these particulars and the purchaser is advised to satisfy themselves as to the working order and condition of any related equipment. Tenure: We are advised freehold. Agents Note: Please contact Dean Estate Agents for an updated brochure if applicable.



Road Map



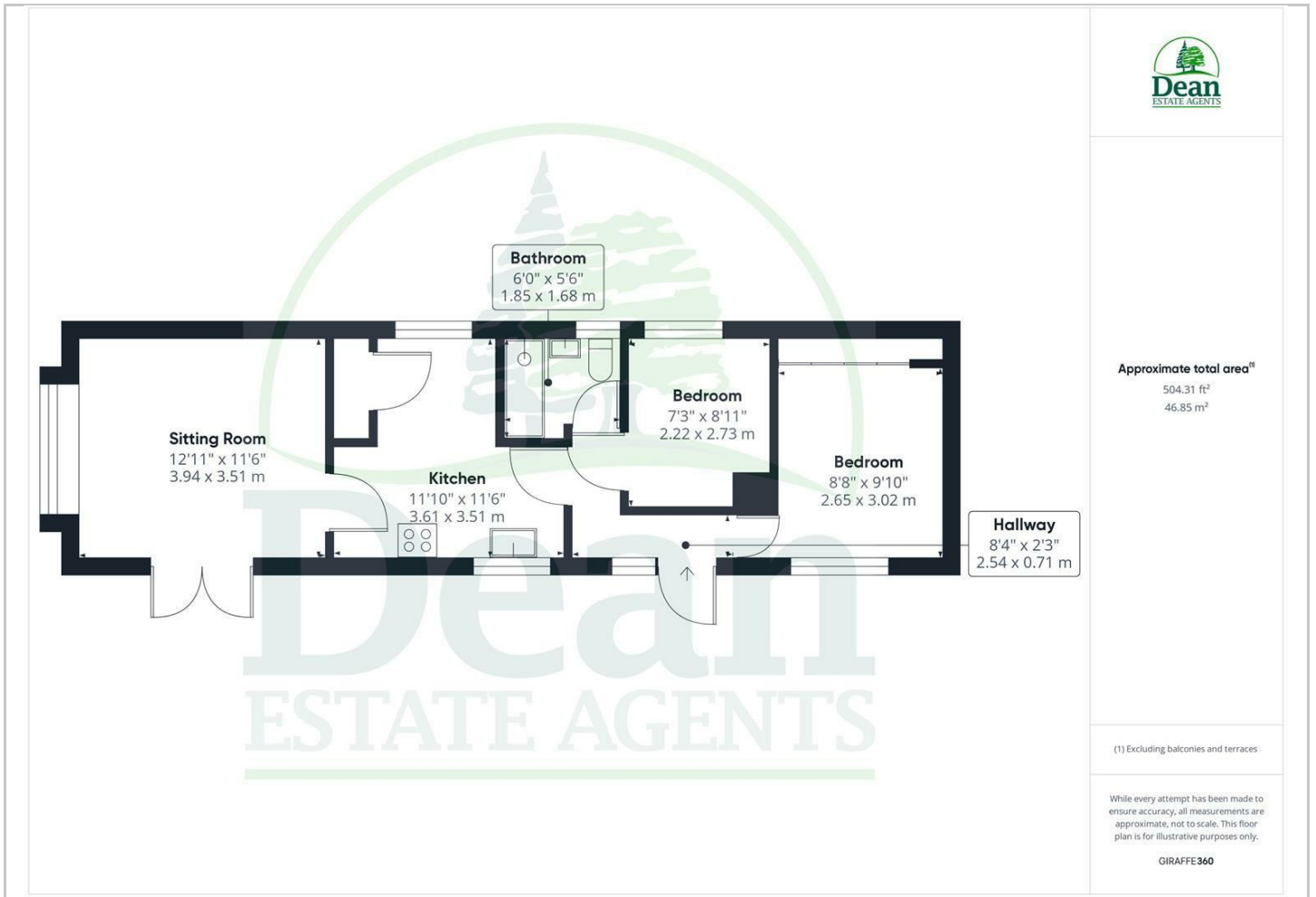
Hybrid Map



Terrain Map



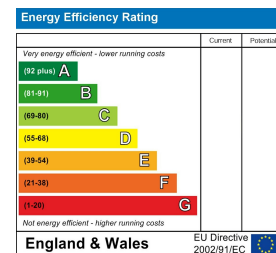
Floor Plan



Viewing

Please contact our Cinderford Office on 01594 825574 if you wish to arrange a viewing appointment for this property or require further information.

Energy Efficiency Graph



These particulars, whilst believed to be accurate are set out as a general outline only for guidance and do not constitute any part of an offer or contract. Intending purchasers should not rely on them as statements of representation of fact, but must satisfy themselves by inspection or otherwise as to their accuracy. No person in this firm's employment has the authority to make or give any representation or warranty in respect of the property.