



## 3 Valley Road

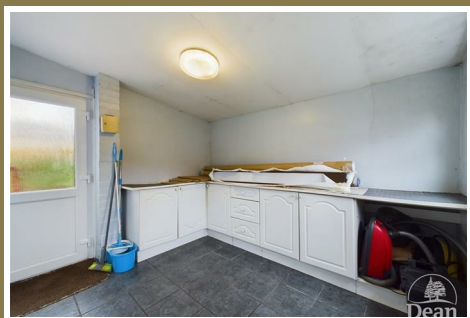
Worrall Hill, Lydbrook, Gloucestershire, GL17 9QH

£189,950



\*\*\*VIRTUAL TOUR AVAILABLE\*\*\*NO ONWARD CHAIN\*\*\* Dean Estate Agents are delighted to offer this fantastic opportunity to purchase this semi-detached house with front & rear gardens, off road parking and two double bedrooms. The accommodation comprises of spacious lounge/diner, kitchen with large utility room to the side and bathroom. The property does require some updating and modernisation.

Worrall Hill is situated near to woodlands with plenty of walks nearby, there are gorgeous views all around of the surrounding forest, there is a social club & recreation ground within walking distance. The nearby village of Lydbrook has many amenities to include a convenience shop, two public houses, two takeaways and social clubs.



Approached via UPVC double glazed door into:

#### Entrance Hallway:

7'9" x 3'2" (2.38m x 0.99m)

Smoke alarm, radiator, power and lighting, doors to lounge & kitchen, stairs to first floor landing.

#### Lounge/Diner:

19'8" x 10'2" (6.00m x 3.10m)

UPVC double aspect double glazed windows, radiators, power and lighting.

#### Kitchen:

11'5" x 8'7" (3.49m x 2.64m)

A range of base units, wall units and drawers, one and a half bowl stainless steel sink with drainer unit, electric hob, extractor hood, double oven, integrated dishwasher, UPVC double glazed window, power and lighting, door to side utility.

#### Utility Room:

10'10" x 9'3" (3.32m x 2.84m)

A range of base units and drawers, UPVC double glazed windows and doors, tiled flooring, power and lighting.

#### First Floor Landing:

7'1" x 4'10" (2.18m x 1.49m)

UPVC double glazed window, loft access, airing cupboard, smoke alarm, power and lighting, doors to bedrooms and bathroom.

#### Bedroom One:

16'1" x 8'9" (4.92m x 2.69m)

UPVC double glazed windows, radiator, power and lighting.

#### Bedroom Two:

11'11" x 10'7" (3.65m x 3.25m)

UPVC double glazed window, radiator, power and lighting.

#### Bathroom:

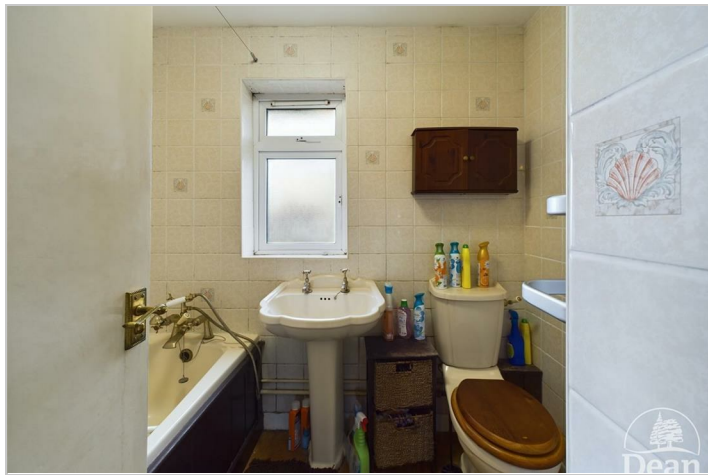
7'1" x 5'5" (2.18m x 1.67m)

Panelled bath with shower over, pedestal wash hand basin, W.C., UPVC double glazed window, fully tiled walls.

#### Outside:

To the front of the property there is a lawned garden enclosed with a small wall, a pedestrian gate and pathway leading to the front door.

To the rear of the property is mainly lawned with a wooden shed and small patio area.



Consumer Notes: Dean Estate Agents Ltd have prepared the information within this website/brochure with care and co-operation from the seller. It is intended to be indicative rather than definitive, without a guarantee of accuracy. Before you act upon any information provided, we request that you satisfy yourself about the completeness, accuracy, reliability, suitability or availability with respect to the website or the information, products, services, or related graphics contained on the website for any purpose.

These details do not constitute any part of any Offer, Contract or Tenancy Agreement.

Photographs used for advertising purposes may not necessarily be the most recent photographs, although every effort is made to update photographs at the earliest opportunity. Any reliance you place on such information is therefore strictly at your own risk. All photographic images are under the ownership of Dean Estate Agents Ltd and therefore Dean Estate Agents retain the copyright. You must obtain permission from the owner of the images to reproduce them.

Tenanted Properties – we are not always able to show the most recent condition of a property due to tenants' privacy and we may choose to show the photographs of the property when it was last vacant to at least allow clients some idea of the internal condition. Therefore, we would of course, urge you to view before making any decisions to purchase or rent the property and before any costs.

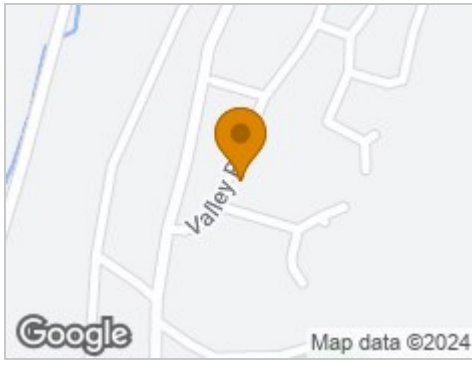
Energy Performance Certificates are supplied to us via a third party and we do not accept responsibility for the content within such reports.

PRC Certificates – Some ex-local authority properties have been repaired in recent years using the PRC Scheme wherein a certificate has been produced by a qualified property engineer. This certificate does not imply the suitability for a mortgage approval and you must satisfy yourself of the work carried out that may meet your lenders criteria.

As with leasehold property or new build development sites, you are likely to be responsible for a contribution to management charges and/or ground rent or a contribution to the development service charge. Please enquire at the time of viewing.

You may also incur fees for items such as leasehold packs and, in addition, you will also need to check the remaining length of any lease before you complete a mortgage application form. Please ask a member of our team for any help required before committing to purchase a property and incurring expense.

## Road Map



## Hybrid Map



## Terrain Map



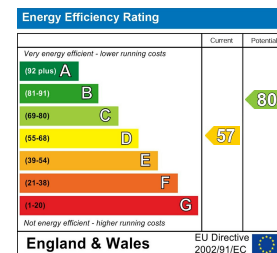
## Floor Plan



## Viewing

Please contact our Coleford Office on 01594 835751 if you wish to arrange a viewing appointment for this property or require further information.

## Energy Efficiency Graph



These particulars, whilst believed to be accurate are set out as a general outline only for guidance and do not constitute any part of an offer or contract. Intending purchasers should not rely on them as statements of representation of fact, but must satisfy themselves by inspection or otherwise as to their accuracy. No person in this firm's employment has the authority to make or give any representation or warranty in respect of the property.