



F I N N E R T I

FINANCE ♦ DEVELOPMENT ♦ PROPERTY

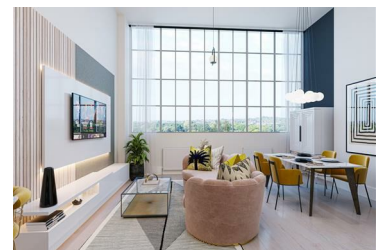
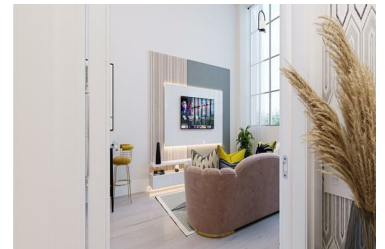
HAYES VILLAGE HAYES
VILLAGE Nestles Avenue
Hayes
UB3 4QE



Set next to the iconic Grand Union Canal and surrounded by 9 acres of green space, Hayes Village is an exciting new community forming in west London. Once home to the former Nestle Factory, we're building over 1,500 homes as part of an area undergoing significant regeneration in Hayes. Served by Crossrail, Hayes & Harlington station is just a 9-minute walk away, enabling the area to have faster connections into the city than many Zone 2 locations.

Buy with just a 5% deposit of £17,050 using Deposit Unlock
 You could save up to £30,450 on your mortgage, deposit or moving costs - you choose!
 1, 2 & 3-bedroom homes available, next to the Grand Union Canal
 Reach Paddington in 20 minutes and Bond Street in 24 minutes
 Homes ready to move into this summer
 Discover over 9 acres of green space at Hayes Village

- 1, 2 & 3-bedroom homes available, next to the Grand Union Canal
- Homes ready to move into this summer
- Reach Paddington in 20 minutes and Bond Street in 24 minutes
- Discover over 9 acres of green space at Hayes Village

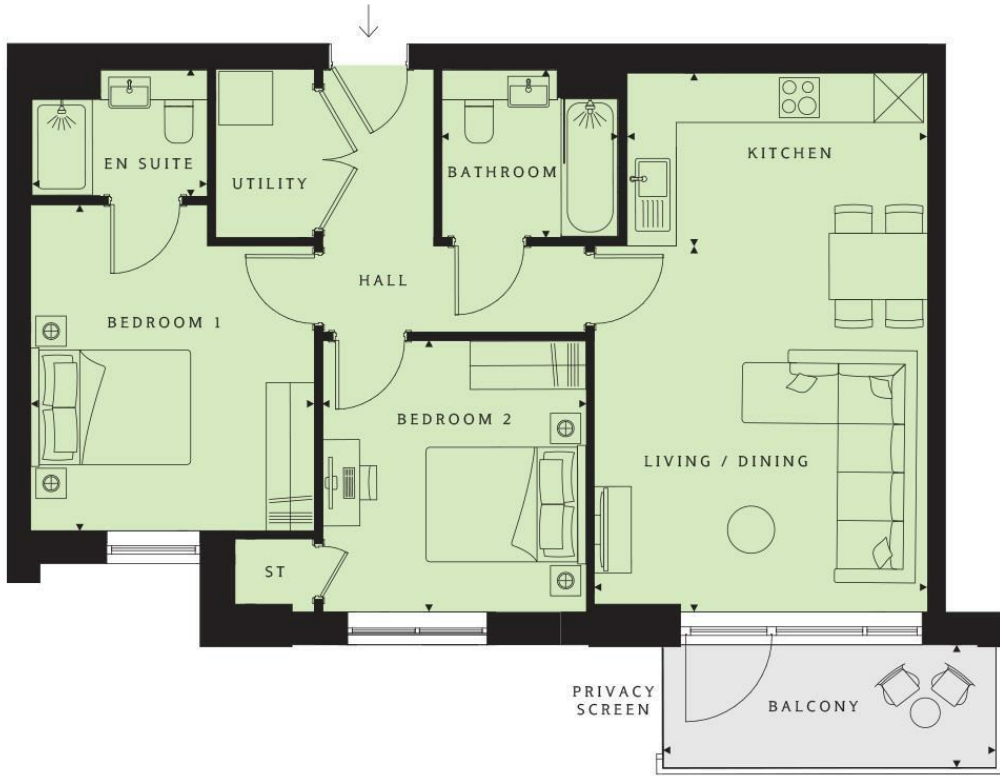


Prices from £460,000

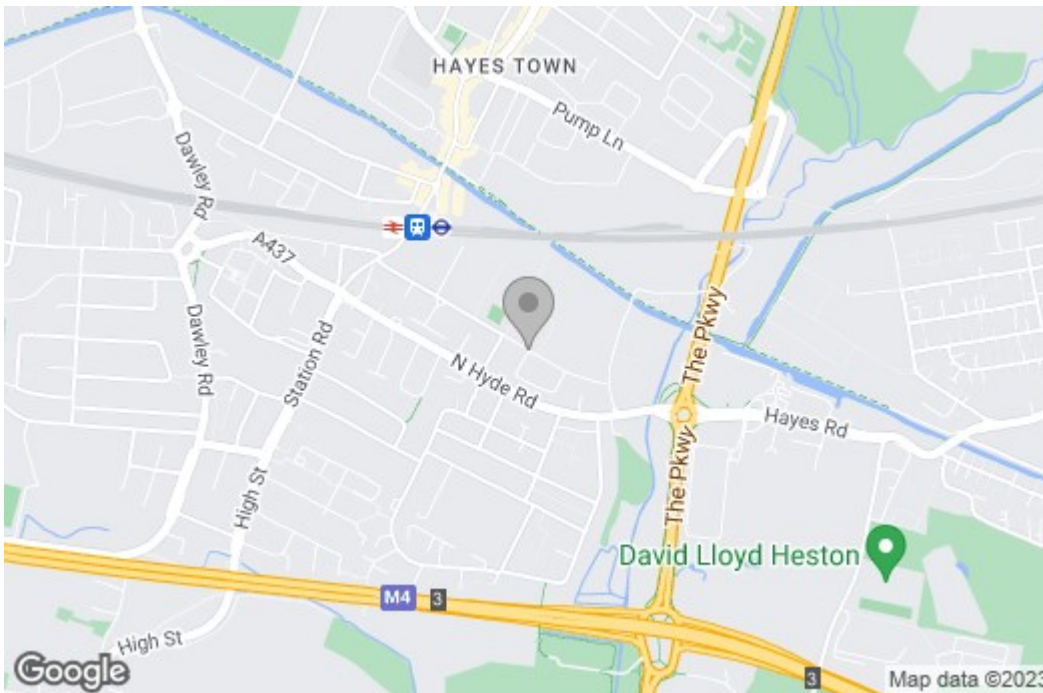
130 Old Street, London, EC1V 9BD

t: 020 7078 7938 ♦ e: info@finnerti.com ♦ finnerti.com

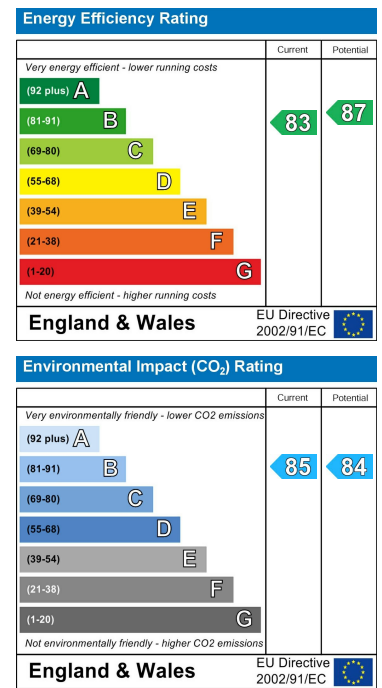
Floor Plan



Area Map



Energy Efficiency Graph



These particulars, whilst believed to be accurate are set out as a general outline only for guidance and do not constitute any part of an offer or contract. Intending purchasers should not rely on them as statements of representation of fact, but must satisfy themselves by inspection or otherwise as to their accuracy. No person in this firm's employment has the authority to make or give any representation or warranty in respect of the property.

130 Old Street, London, EC1V 9BD

t: 020 7078 7938 ♦ e: info@finnerti.com ♦ finnerti.com