

HJC

HIGHER VALUES



Lovelace Gardens

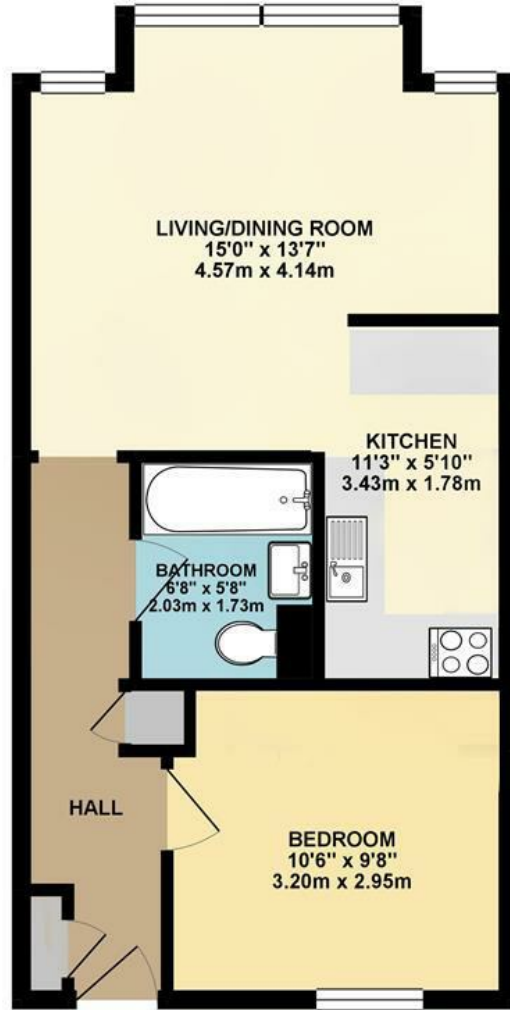
Surbiton, KT6 6RX

Guide Price £295,000

A superbly presented one bedroom apartment situated in the Lovelace area. The property comprises of a well fitted kitchen and living area, separate bedroom area and bathroom. Further benefits include an allocated parking space, communal garden area and a private external storage shed. This property is being sold with no onward chain.

- First Floor Apartment
- Well Presented
- Modern Bathroom
- No Onward Chain
- Great Location
- Open Plan Living
- Parking
- Close to Surbiton Station and Town Centre

Floor Plan

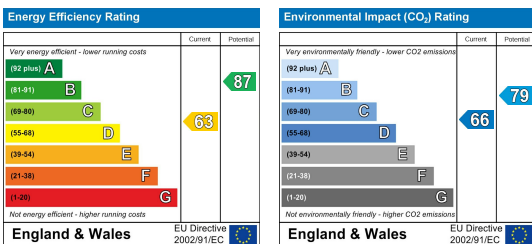


FIRST FLOOR FLAT

LOVELACE GARDENS, SURBITON
INTERNAL FLOOR AREA (APPROX.) 450 sq ft/ 41.8 sq m

Whilst every attempt has been made to ensure the accuracy of this floor plan, measurement of doors, windows, rooms and any other items are approximate and no responsibility is taken for any error, omission or mis-statement.
Made with Metropix © 2019.

Energy Efficiency Graph



These particulars, whilst believed to be accurate are set out as a general outline only for guidance and do not constitute any part of an offer or contract. Intending purchasers should not rely on them as statements of representation of fact, but must satisfy themselves by inspection or otherwise as to their accuracy. No person in this firm's employment has the authority to make or give any representation or warranty in respect of the property.