

HJC

HIGHER VALUES



Cooper House Lovelace Gardens

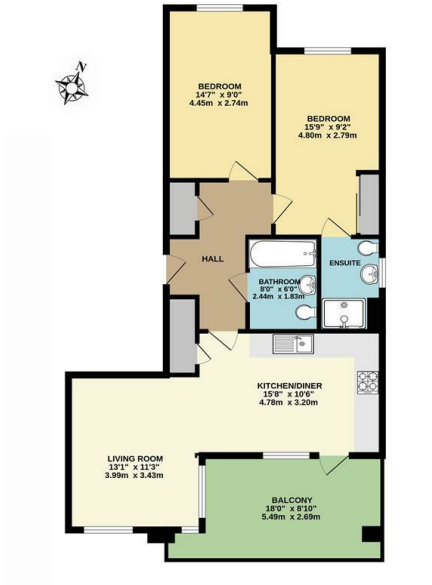
, Surbiton, KT6 6ST

Guide Price £575,000



2 2 1 B

Floor Plan



FIRST FLOOR FLAT

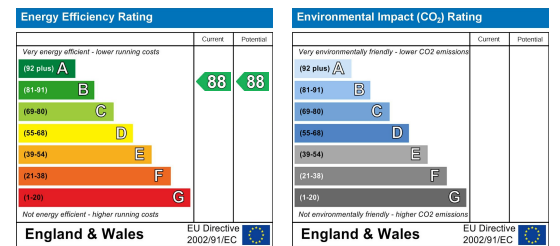
LOVELACE GARDENS, SURBITON
INTERNAL FLOOR AREA (APPROX.) 802 sq ft/ 74.5 sq m

Whilst every attempt has been made to ensure the accuracy of this floor plan, measurement of doors, windows, rooms and any other items are approximate and no responsibility is taken for any error, omission or mis-statement. Made with Metropix © 2024.

Area Map



Energy Efficiency Graph



Viewing

Please contact our HJC Surbiton Office on 020 8390 0404 if you wish to arrange a viewing appointment for this property or require further information.

- Luxury Built 2 Double Bedroom Apartment
- Double Bedroom
- Open Plan Fully Fitted Kitchen
- Spacious Living Space
- Allocated Parking for One Car
- Main Bedroom with Built in Storage and En-Suite
- Family Bathroom with Shower over the Bath
- Dining Area
- Large Private Balcony
- Chain Free

Luxury built 2 double bedroom apartment, offering bright and spacious accommodation, built with a very high specification throughout. This lovely apartment is very conveniently located in Lovelace Gardens, a very popular part of Surbiton with walking distance to the station, town, parks and local amenities. The main double bedroom features ensuite and built in wardrobes. The second bedroom is also a double and spacious in size, family bathroom with shower over bath. Generous living space with open plan kitchen with door opening onto private balcony, perfect for alfresco entertaining. This wonderful apartment also comes with allocated parking for one car. Offered to market chain free. Council Tax Band E.



These particulars, whilst believed to be accurate are set out as a general outline only for guidance and do not constitute any part of an offer or contract. Intending purchasers should not rely on them as statements of representation of fact, but must satisfy themselves by inspection or otherwise as to their accuracy. No person in this firm's employment has the authority to make or give any representation or warranty in respect of the property.