

HJC

HIGHER VALUES



Lovelace Gardens

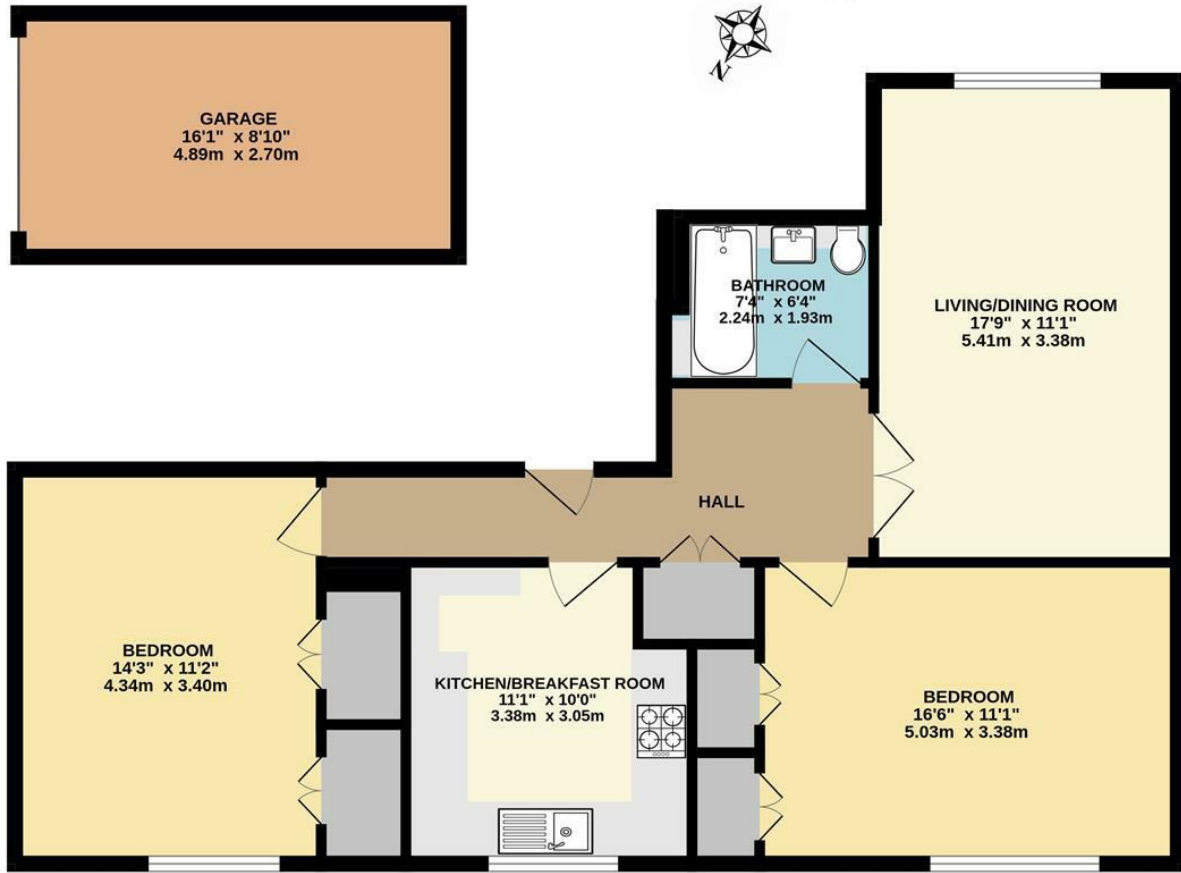
Surbiton, KT6 6SE

Guide Price £475,000

Purpose Built 2nd Floor Spacious 2 Double Bedroom Flat, located in a very desirable location in Surbiton. This home has been tastefully presented offering generous proportions, renovated bathroom, storage and lots of natural light. Located within the highly desirable Lovelace area, Surbiton mainline station and high street are within walking distance. Well maintained communal gardens and a garage in a block to the rear. Sold with a Share of the Freehold and a lease in excess of 900 years. Council Tax Band D.

- Spacious Purpose Built 2 Double Bedroom Flat
- Generous Sized Rooms
- Separate Kitchen
- Private Garage
- Walking Distance to Station, Town and local amenities
- Light and Bright Accommodation
- Newly Refurbished Bathroom
- Living/Dining Room
- Communal Gardens
- Share Of Freehold

Floor Plan

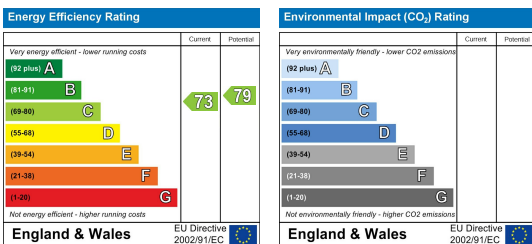


SECOND FLOOR FLAT

Whilst every attempt has been made to ensure the accuracy of this floor plan, measurement of doors, windows, rooms and any other items are approximate and no responsibility is taken for any error, omission or mis-statement. Made with Metropix © 2024.

LOVELACE GARDENS, SURBITON
INTERNAL FLOOR AREA (APPROX.) 840 sq ft/ 78.0 sq m
EXCLUDING GARAGE

Energy Efficiency Graph



These particulars, whilst believed to be accurate are set out as a general outline only for guidance and do not constitute any part of an offer or contract. Intending purchasers should not rely on them as statements of representation of fact, but must satisfy themselves by inspection or otherwise as to their accuracy. No person in this firm's employment has the authority to make or give any representation or warranty in respect of the property.