

HJC

HIGHER VALUES



Kingswood Close

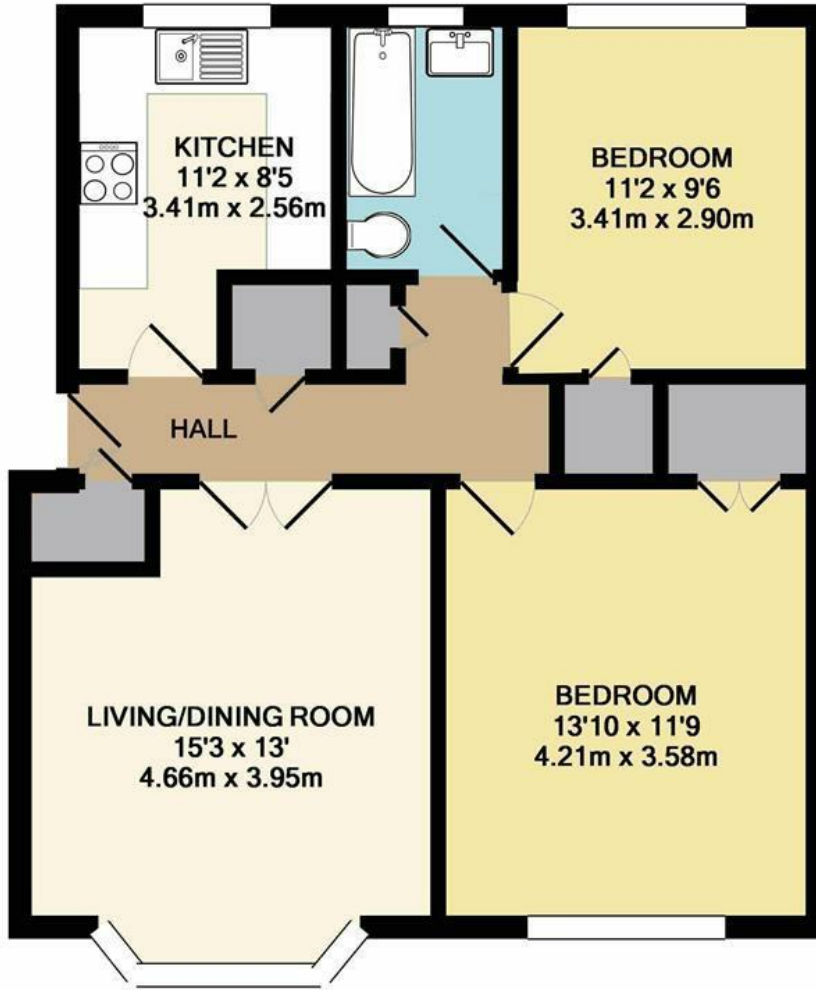
Surbiton, KT6 6DZ

Guide Price £425,000

Positioned in a sought after location of Surbiton this lovely spacious two double bedroom ground floor flat is within close proximity of Surbiton Train Station and town centre. The property includes a large living/dining room, recently fitted modern kitchen, white suite bathroom, double glazing, gas central heating and security entry system. Share of Freehold, 940 years lease remaining, Service charges £325 per quarter, Council tax band C.

- Quiet cul-de-sac location
- New Modern Fitted Kitchen
- Spacious Two Double Bedrooms
- Double Glazed & Gas Central Heating
- Close to Surbiton Station and Town Centre
- Ground Floor Purpose Built Flat
- Living/dining Room
- White bathroom Suite
- Parking Permit for 1 vehicle.
- Close to the River Thames

Floor Plan



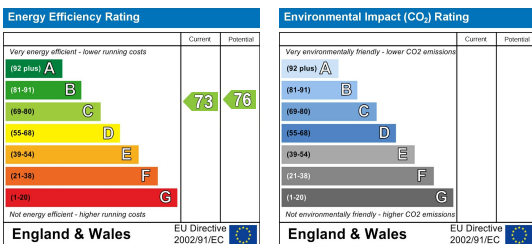
GROUND FLOOR FLAT

KINGSWOOD CLOSE, SURBITON

INTERNAL FLOOR AREA (APPROX.) 764 sq ft/ 71.0 sq m

Whilst every attempt has been made to ensure the accuracy of this floor plan, measurement of doors, windows, rooms and any other items are approximate and no responsibility is taken for any error, omission or mis-statement.
Made with Metropix © 2023.

Energy Efficiency Graph



These particulars, whilst believed to be accurate are set out as a general outline only for guidance and do not constitute any part of an offer or contract. Intending purchasers should not rely on them as statements of representation of fact, but must satisfy themselves by inspection or otherwise as to their accuracy. No person in this firm's employment has the authority to make or give any representation or warranty in respect of the property.