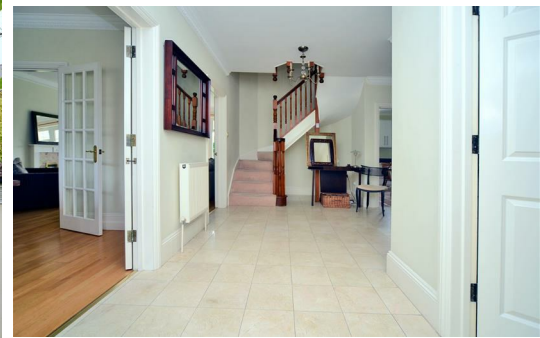


HJC

HIGHER VALUES



Jennings Close

Surbiton, KT6 5RB

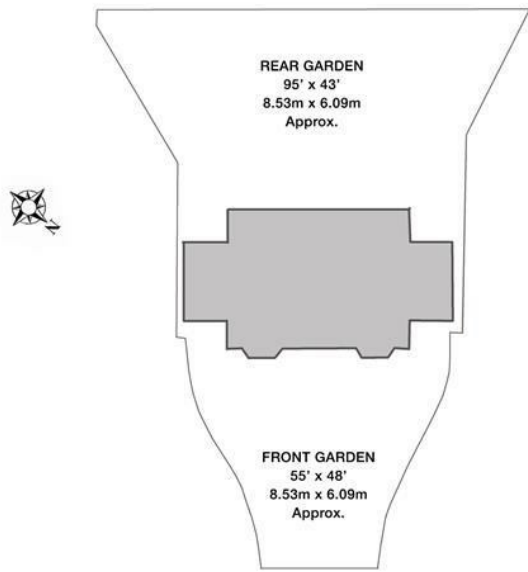
Guide Price

£1,795,000

Stunning 6 bedroom detached house on a tree lined avenue set on the prestigious St James Development. The style is characterised by Regency elegance. Built by St James this home includes a spacious layout creating a wonderful home. The property comprises of 2 En-suites, 2 Bathrooms, dressing room, 3 Reception rooms, Kitchen/ Breakfast room with French doors opening out on the family garden. Utility room, large entrance hall, downstairs cloakroom, ample off street parking for numerous cars, 2 garages and planting to the front of the property. Close to the Nuffield Gym, River Thames and Surbiton Station. This property also has the benefit of no onward chain.

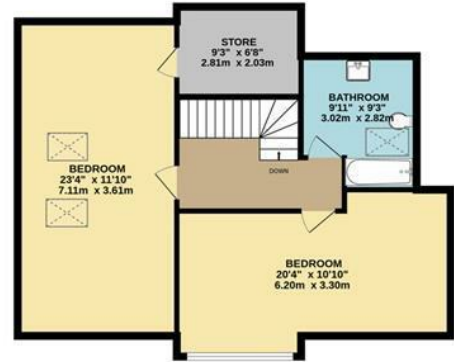
- 6 Bedroom Detached House
- 2 Family Bathrooms
- Utility Room
- Kitchen/ Breakfast Room
- 2 Garages and Off Street parking for multiple cars
- 2 Ensuites
- Downstairs Cloakroom
- 3 Reception Rooms
- Dressing Room
- Family Garden

Floor Plan



JENNINGS CLOSE, LONG DITTON INTERNAL FLOOR AREA (APPROX.) 3230 sq ft/ 300 sq m

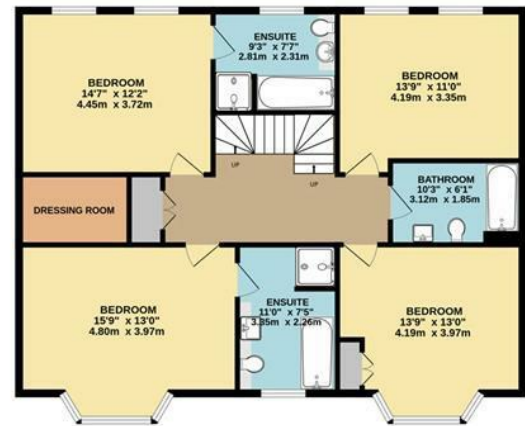
Whilst every attempt has been made to ensure the accuracy of this floor plan, measurement of doors, windows, rooms and any other items are approximate and no responsibility is taken for any error, omission or mis-statement. Made with Metropix © 2022.



SECOND FLOOR

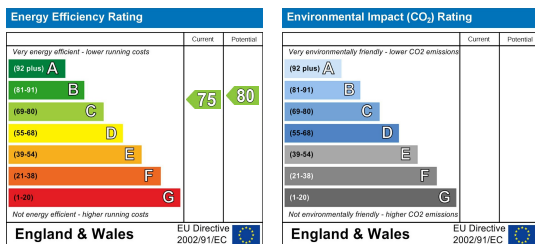


GROUND FLOOR



FIRST FLOOR

Energy Efficiency Graph



These particulars, whilst believed to be accurate are set out as a general outline only for guidance and do not constitute any part of an offer or contract. Intending purchasers should not rely on them as statements of representation of fact, but must satisfy themselves by inspection or otherwise as to their accuracy. No person in this firm's employment has the authority to make or give any representation or warranty in respect of the property.