

HJC

HIGHER VALUES



Thornhill Road

Surbiton, KT6 7TL

Guide Price £900,000

We are delighted to offer for sale this lovely extended Victorian home with beautiful character features. To the ground floor, front reception room with open fireplace and square bay window. Downstairs WC, the hallway leads to a large open plan kitchen dining room, with additional space for seating area. Bi-fold doors opening out onto a southerly facing garden with mature shrubs and entertaining areas. With rear gate access to the garden, perfect for bikes and gardening materials. To the first floor are 3 bedrooms and family bathroom, to the second floor there is the fourth bedroom, study space and shower room. Fabulous home offering lost of space for all the family.

- Victorian home with character features
- 2 Bathrooms
- Large Open Plan Kitchen/Dining Room
- Large Southerly Facing Garden
- Downstairs WC
- 4 Bedrooms
- Front Reception Room with open fireplace
- Bi-Fold Doors to Garden
- Rear Garden Access
- Close to transport links

Floor Plan

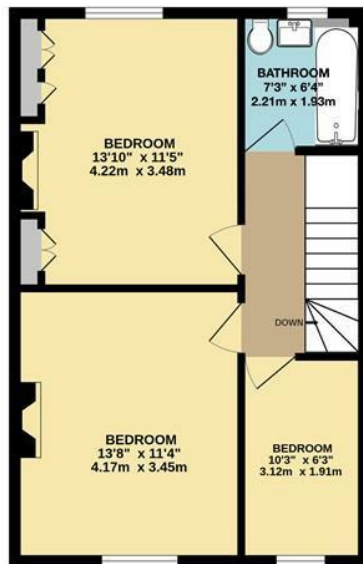


GROUND FLOOR

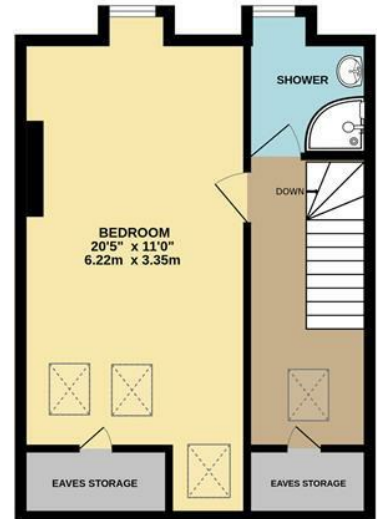


THORNHILL ROAD, SURBITON INTERNAL FLOOR AREA (APPROX.) 1625 sq ft/ 150.9 sq m

Whilst every attempt has been made to ensure the accuracy of this floor plan, measurement of doors, windows, rooms and any other items are approximate and no responsibility is taken for any error, omission or mis-statement. Made with Metropix © 2023.

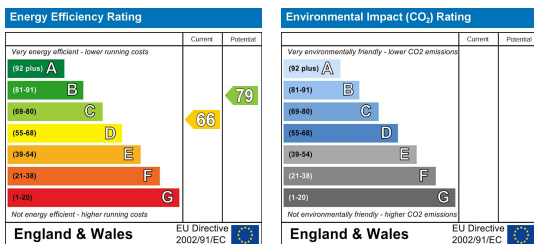


FIRST FLOOR



SECOND FLOOR

Energy Efficiency Graph



These particulars, whilst believed to be accurate are set out as a general outline only for guidance and do not constitute any part of an offer or contract. Intending purchasers should not rely on them as statements of representation of fact, but must satisfy themselves by inspection or otherwise as to their accuracy. No person in this firm's employment has the authority to make or give any representation or warranty in respect of the property.