

HJC

HIGHER VALUES



Vallings Place

Surbiton, KT6 5AZ

Guide Price £795,000

A stunning three bedroom home built in 2012 by St James on this private gated development. The property is in superb condition and offers light and airy living accommodation throughout. The ground floor accommodation comprises a kitchen with Siemens integrated appliances, downstairs wc and a very generous living room with Bi-folding doors leading on to a stunning landscaped rear garden. The first floor accommodation includes the main bedroom with ensuite, two further bedrooms and a family bathroom. This home is located just moments from the River Thames, Long Ditton Recreation Ground and within a close proximity to Surbiton's town centre which offers a great selection of amenities including mainline station with links into Waterloo, shops, bars.

- Private Gated Development
- Living/Dining Room
- 3 Bedrooms
- Double Glazed with Bi-folding doors to the Garden
- Underfloor Heating
- End Of Terrace
- Alno Kitchen with Siemens Appliances
- Downstairs WC
- Stunning Garden by Tom Howard Garden Designs
- Close to River Thames and Surbiton Station

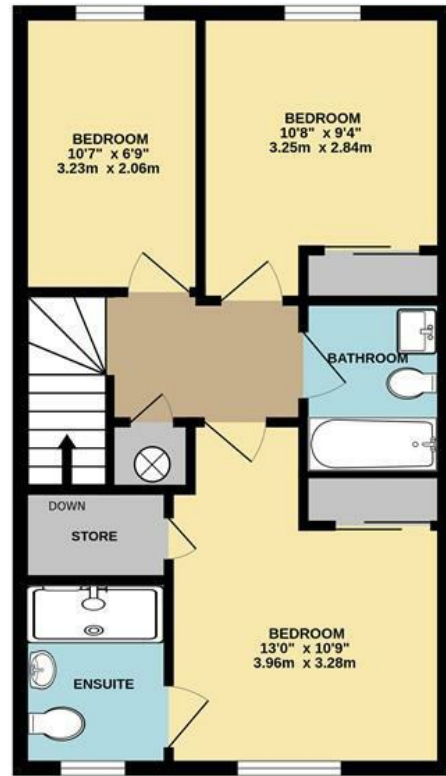
Floor Plan



GROUND FLOOR

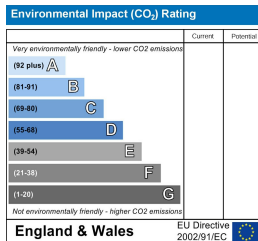
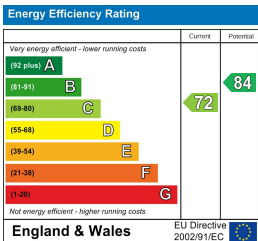
VALLINGS PLACE, LONG DITTON INTERNAL FLOOR AREA (APPROX.) 1000 sq ft/ 92.9 sq m

Whilst every attempt has been made to ensure the accuracy of this floor plan, measurement of doors, windows, rooms and any other items are approximate and no responsibility is taken for any error, omission or mis-statement. Made with Metropix © 2023.



FIRST FLOOR

Energy Efficiency Graph



These particulars, whilst believed to be accurate are set out as a general outline only for guidance and do not constitute any part of an offer or contract. Intending purchasers should not rely on them as statements of representation of fact, but must satisfy themselves by inspection or otherwise as to their accuracy. No person in this firm's employment has the authority to make or give any representation or warranty in respect of the property.