

# HJC

HIGHER VALUES



## Egmont Avenue

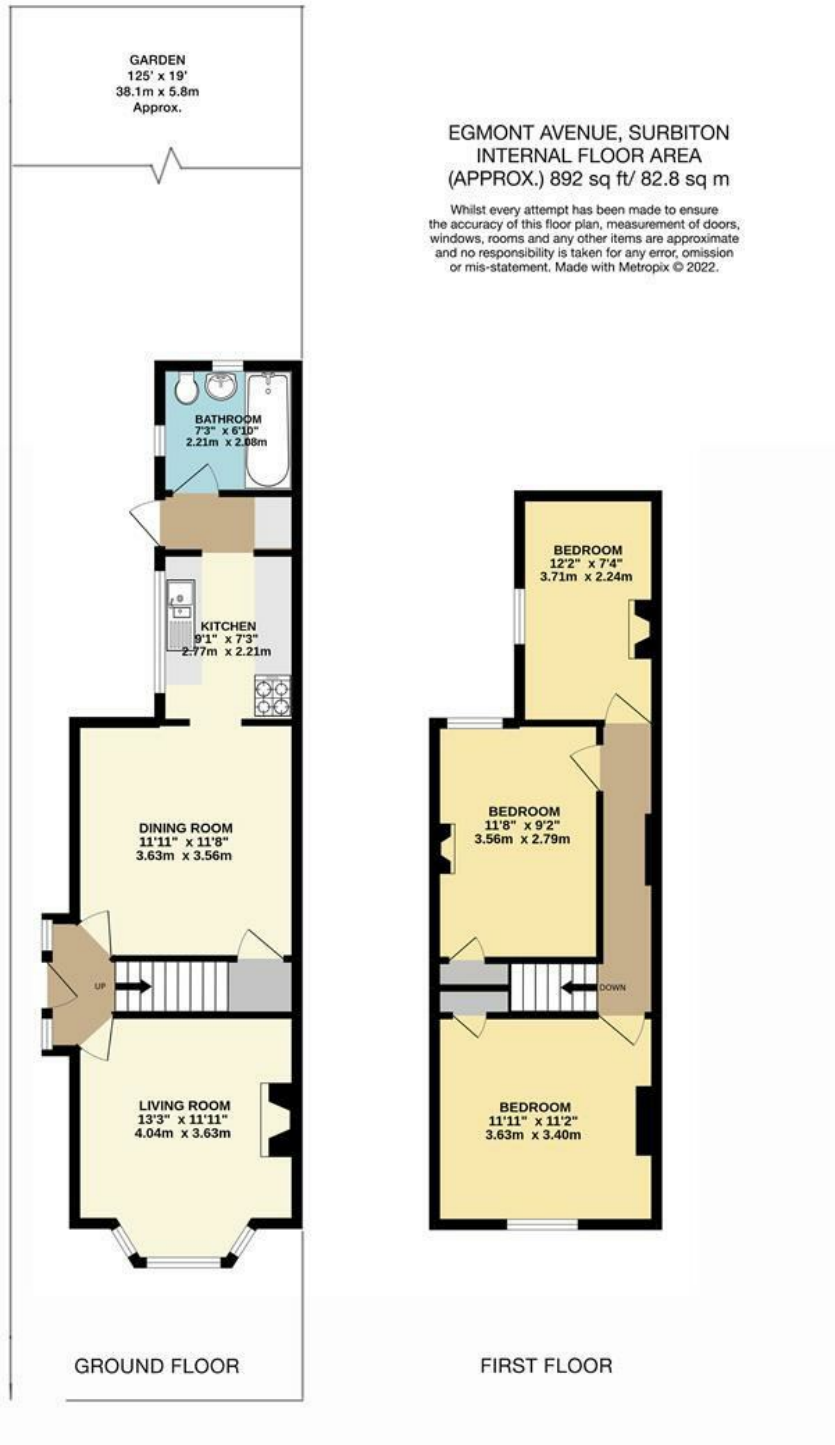
Surbiton, KT6 7AU

Guide Price £500,000

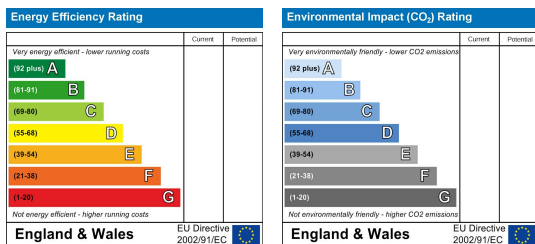
Beautiful Semi-Detached Victorian House, in need of complete refurbishment. Three Double Bedrooms, 2 Reception Rooms, kitchen with utility area, downstairs bathroom. Featuring a couple of character fireplaces and a large south facing garden, Located in quiet cul-de-sac within walking distance to local amenities and transport. Council Tax band D, Freehold property with No Onward Chain. Potential to extend subject to planning permission

- Victorian Semi- Detached House
- Original Character Features
- Quiet and desirable location
- In need of modernisation
- Council Tax Band D
- 3 Double bedrooms
- Large Garden
- Walking distance to amenities and transport
- Freehold property
- No onward Chain

# Floor Plan



## Energy Efficiency Graph



These particulars, whilst believed to be accurate are set out as a general outline only for guidance and do not constitute any part of an offer or contract. Intending purchasers should not rely on them as statements of representation of fact, but must satisfy themselves by inspection or otherwise as to their accuracy. No person in this firm's employment has the authority to make or give any representation or warranty in respect of the property.