

HJC

HIGHER VALUES



Williams Grove

, KT6 5RN

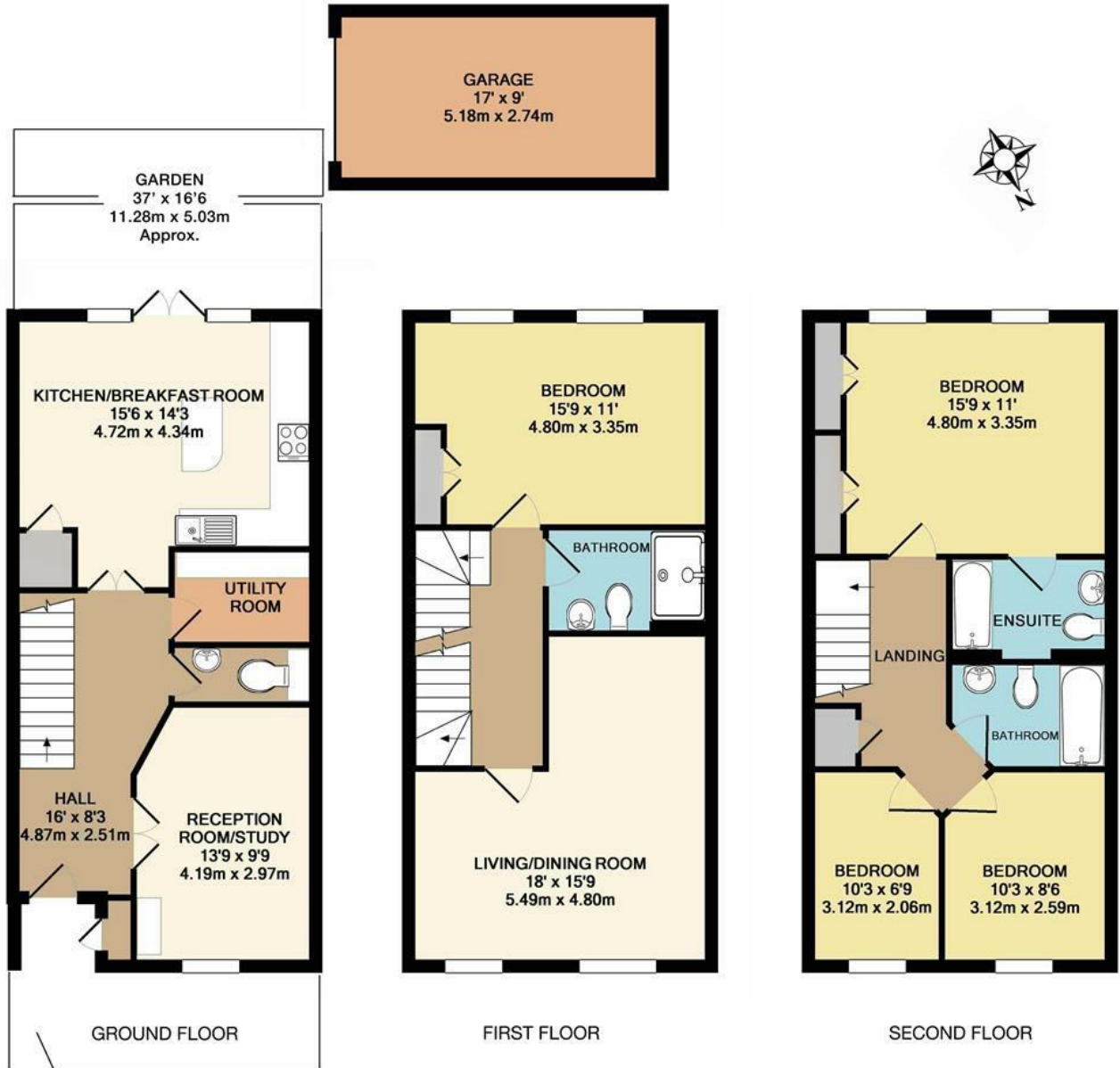
Guide Price

£1,100,000

HJC are proud to present this rare end of terrace town house, set on the prestigious St James Development with separate garage and extra reception room. The accommodation includes a spacious lounge, dining room, garden aspect kitchen/breakfast room, master bedroom with ensuite, guest bedroom with ensuite, two further bedrooms and a family bathroom. The property also benefits from gas central heating, pretty rear garden and driveway parking.

- End of Terrace Town House one of only two designed this way
- 4 Bedrooms
- Kitchen/breakfast room
- Southwest facing garden
- Detached garage and osp
- St James Development
- 3 bath/shower rooms
- Two Reception Rooms
- Close To Surbiton Station
- Close to the River Thames

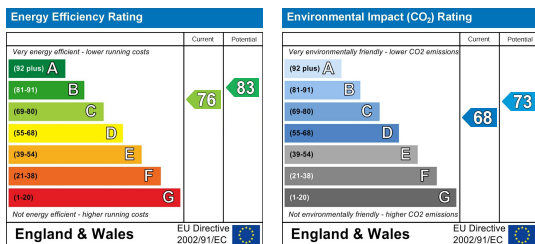
Floor Plan



Whilst every attempt has been made to ensure the accuracy of this floor plan, measurement of doors, windows, rooms and any other items are approximate and no responsibility is taken for any error, omission or mis-statement. Made with Metropix © 2017.

WILLIAMS GROVE, SURBITON
 TOTAL APPROX. FLOOR AREA 1723 sq ft/ 160.0 sq m including garage

Energy Efficiency Graph



These particulars, whilst believed to be accurate are set out as a general outline only for guidance and do not constitute any part of an offer or contract. Intending purchasers should not rely on them as statements of representation of fact, but must satisfy themselves by inspection or otherwise as to their accuracy. No person in this firm's employment has the authority to make or give any representation or warranty in respect of the property.